

WAAS CH <b>40135</b> <b>W33A</b>	APP CRS <b>330°</b>	Rwy Idg TDZE <b>1424</b> Apt Elev <b>1430</b>	<b>8000</b>
--	------------------------	---	-------------

# RNAV (GPS) RWY 33

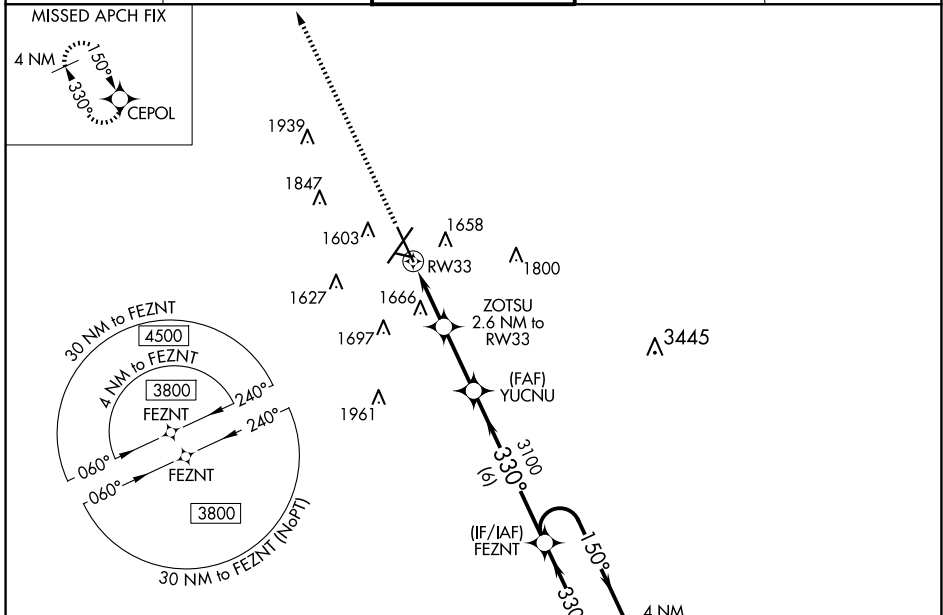
JOE FOSS FLD (F'SD)

RNP APCH-GPS.

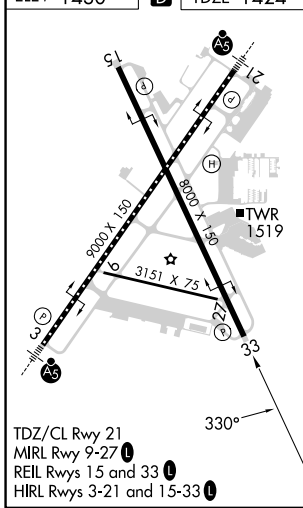
**⚠** Rwy 33 helicopter visibility reduction below  $\frac{3}{4}$  SM NA. For uncompensated Baro-VNAV systems, procedure NA below -22°C or above 54°C.  
**ASR**  
**⚠** -31°C

MISSED APPROACH:  
 Climb to 3800 direct  
 CEPOL and hold.

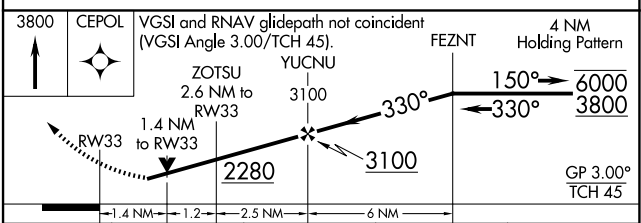
ATIS <b>126.6</b>	SIoux FALLS APP CON* <b>125.8 306.2</b>	SIoux FALLS TOWER* <b>118.3(CTAF) 257.8</b>	GND CON <b>121.9 348.6</b>	UNICOM <b>122.95</b>
----------------------	--	--	-------------------------------	-------------------------



ELEV 1430	<b>D</b>	TDZE 1424
-----------	----------	-----------



TDZ/CL Rwy 21  
 MIRL Rwy 9-27  
 REIL Rwys 15 and 33  
 HIRL Rwys 3-21 and 15-33



CATEGORY	A	B	C	D
LPV DA		1729- $\frac{7}{8}$	305 (300- $\frac{7}{8}$ )	
LNAV/VNAV DA		1974-1 $\frac{5}{8}$	550 (600-1 $\frac{5}{8}$ )	
LNAV MDA	1920-1	496 (500-1)	1920-1 $\frac{3}{8}$	496 (500-1 $\frac{3}{8}$ )
<b>C</b> CIRCLING	1960-1 530 (600-1)	1980-1 550 (600-1)	2060-1 $\frac{3}{4}$ 630 (700-1 $\frac{3}{4}$ )	2200-2 $\frac{1}{2}$ 770 (800-2 $\frac{1}{2}$ )

NC-1, 23 JAN 2025 to 20 FEB 2025

NC-1, 23 JAN 2025 to 20 FEB 2025