

VORTAC FSD 115.0 Chan 97	APP CRS 147°	Rwy Idg 8000 TDZE 1429 Apt Elev 1430
--	------------------------	---

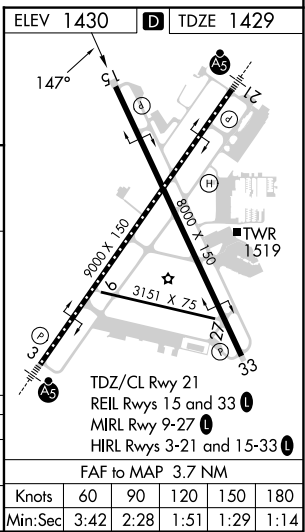
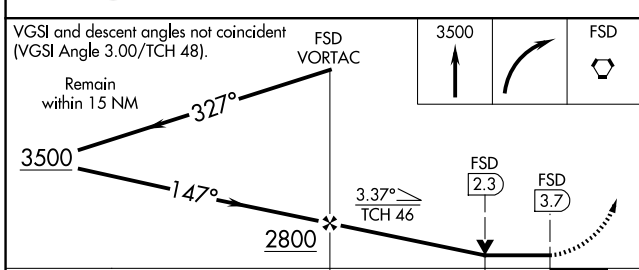
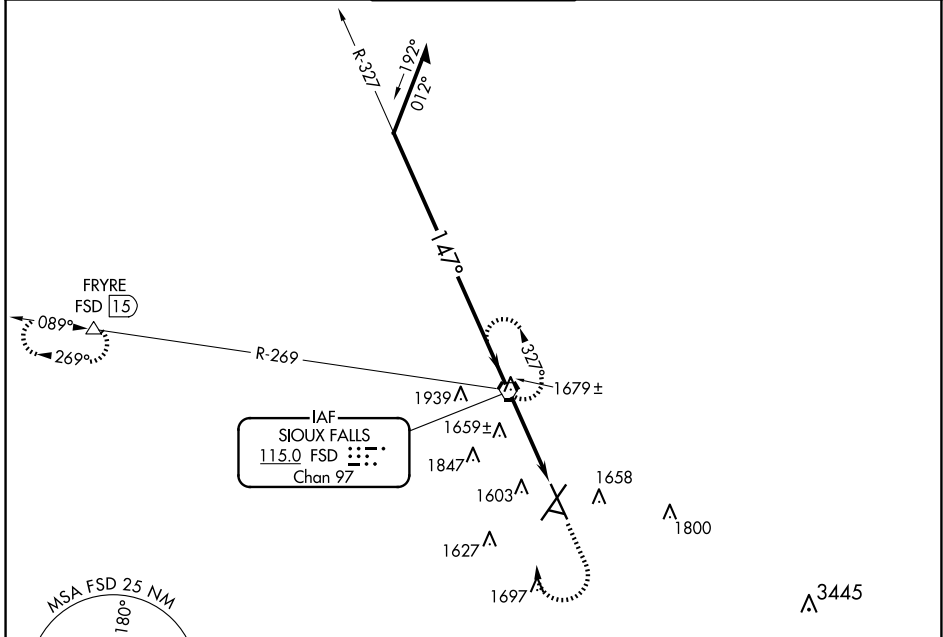
VOR or TACAN RWY 15

JOE FOSS FLD (FSD)

▲ Rwy 15 helicopter visibility reduction below 3/4 SM NA.
ASR -31°C

MISSED APPROACH: Climb to 3500 then right turn direct FSD VORTAC and hold. (TACAN aircraft continue climb to 5000 via FSD R-269 to FRYRE 15 DME and hold west, right turns, 089° inbound)

ATIS 126.6	SIoux FALLS APP CON* 125.8 306.2	SIoux FALLS TOWER* 118.3(CTAF) 257.8	GND CON 121.9 348.6	UNICOM 122.95
----------------------	--	--	-------------------------------	-------------------------



NC-1, 23 JAN 2025 to 20 FEB 2025

NC-1, 23 JAN 2025 to 20 FEB 2025