

FORT LEWIS, WASHINGTON

# ILS or LOC RWY 15

LOC I-GRF <b>108.3</b> Chan <b>20</b>	APCH CRS <b>151°</b>	Rwy Idg TDZE Arprt Elev <b>6124</b> <b>300</b> <b>301</b>	[USA]	GRAY AAF (JOINT BASE LEWIS MCCHORD) (KGRF)
---	-------------------------	--	-------	--

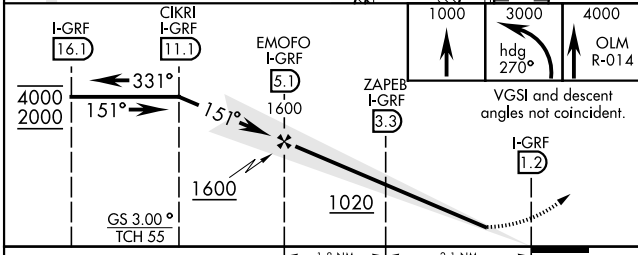
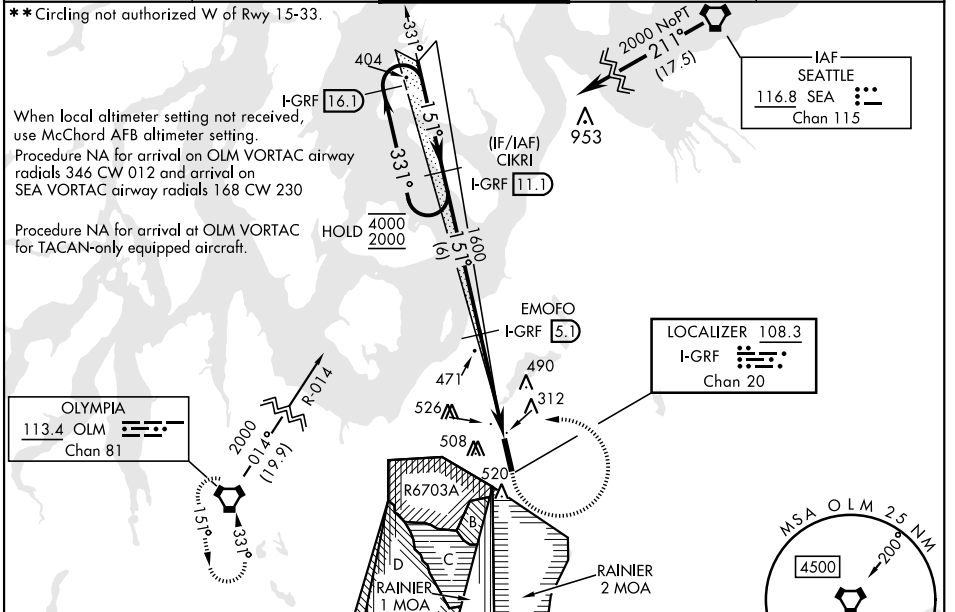
RNAV1 - GPS from SEA VORTAC.

DME required for civil use. For non-RNAV aircraft, RADAR required from SEA VORTAC.

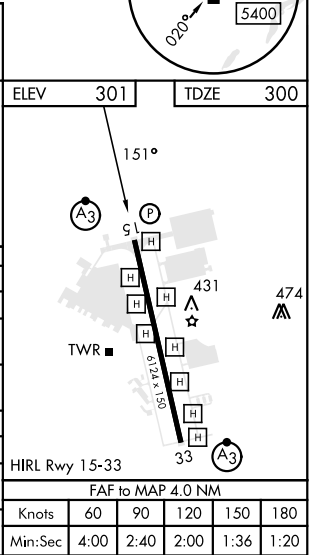
SSALR MISSED APPROACH: Climb to 1000, then climbing left turn to 3000 on hdg 270° and OLM VORTAC R-014, then continue climb to 4000 on OLM R-014 to OLM and hold.

\* When ALS inop when using McChord AFB altimeter setting, increase LOC CAT C/D vis to RVR 55.

ATIS <b>124.65 306.2</b>	SEATTLE APP CON <b>120.1 290.9</b>	TOWER ★ <b>119.325 (CTAF) 256.8</b>	GND CON <b>121.9 290.2</b>	CLNC DEL <b>121.9 290.2</b>
-----------------------------	---------------------------------------	--	-------------------------------	--------------------------------



CATEGORY	A	B	C	D
S-ILS 15	500/24		200	(200-1/2)
S-LOC 15	640/24	340 (400-1/2)	640/26	340 (400-1/2)
CIRCLING **	840-1	539 (600-1)	840-1 1/2 539 (600-1 1/2)	920-2 619 (700-2)
McCHORD FLD ALTIMETER SETTING MINIMUMS				
S-ILS 15	516/24		216	(300-1/2)
S-LOC 15*	660/24	360 (400-1/2)	660/35	360 (400-3/4)
CIRCLING **	860-1	559 (600-1)	860-1 1/2 559 (600-1 1/2)	940-2 639 (700-2)



FORT LEWIS, WASHINGTON 47°05'N-122°35'W GRAY AAF (JOINT BASE LEWIS MCCHORD) (KGRF)

Amdt 8A 05DEC19

# ILS or LOC RWY 15

NW-1, 23 JAN 2025 to 20 FEB 2025

NW-1, 23 JAN 2025 to 20 FEB 2025