

RNAV 1- DME/DME/IRU or GPS.

RADAR required.

TAMPA APP CON
 135.5 279.6
 KMCF ATIS
 133.825 270.1
 PIE ATIS
 134.5
 TPA D-ATIS
 126.45
 VDF AWOS-3
 121.125

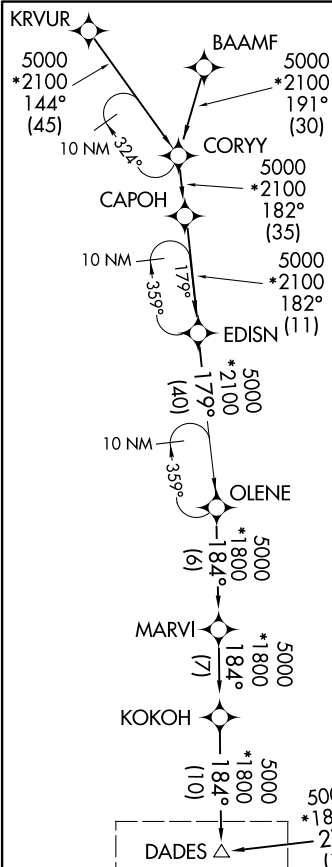


NOTE: Jet and turboprop aircraft only.
 NOTE: Do not file KRVUR, EDISN, BEAUX and NICCK
 Transitions - To be assigned by ATC.

(DADES.DADES1) 23110
 DADES ONE ARRIVAL (RNAV)

AL-416 (FAA)
 Transition Routes

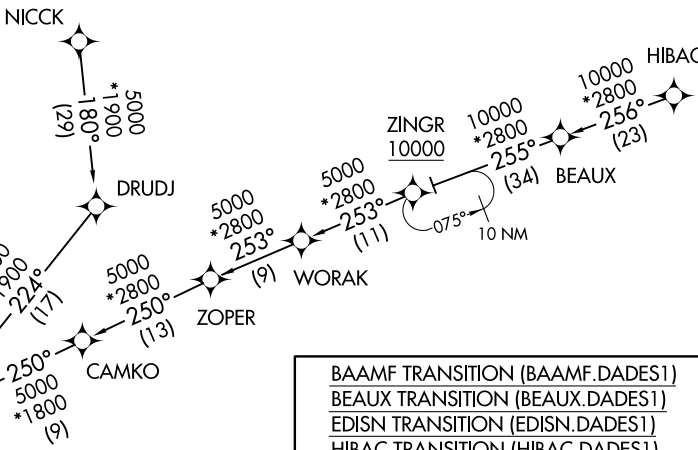
TAMPA, FLORIDA



DADES Δ
 See following page for arrival routes.

(NARRATIVE ON FOLLOWING PAGE)
 (CONTINUED ON FOLLOWING PAGE)

NOTE: Chart not to scale.



- BAAMF TRANSITION (BAAMF.DADES1)
- BEAUX TRANSITION (BEAUX.DADES1)
- EDISN TRANSITION (EDISN.DADES1)
- HIBAC TRANSITION (HIBAC.DADES1)
- KRVUR TRANSITION (KRVUR.DADES1)
- NICCK TRANSITION (NICCK.DADES1)

DADES ONE ARRIVAL (RNAV)
 (DADES.DADES1) 03NOV22

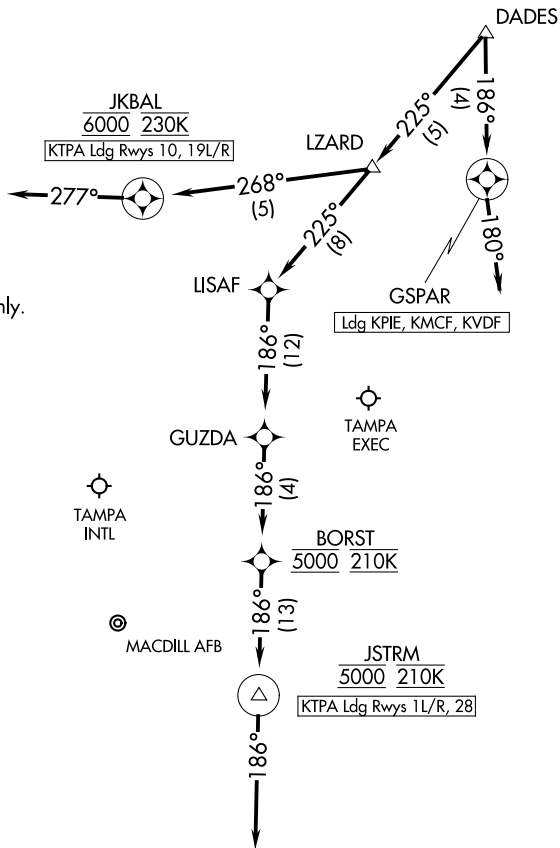
Transition Routes

TAMPA, FLORIDA

TAMPA APP CON
135.5 279.6
KMCF ATIS
133.825 270.1
PIE ATIS
134.5
TPA D-ATIS
126.45
VDF AWOS-3
121.125

RNAV 1- DME/DME/IRU or GPS.

RADAR required.



NOTE: Jet and turboprop aircraft only.

NOTE: Chart not to scale.

ARRIVAL ROUTE DESCRIPTION

LANDING KTPA RUNWAYS 1L/R, 28: From DADES on track 225° to LZARD, then on track 225° to LISAF, then on track 186° to GUZDA, then on track 186° to cross BORST at 5000 and at 210K, then on track 186° to cross JSTRM at 5000 and at 210K, then on track 186°.
Expect RADAR vectors to final approach course.

LANDING KTPA RUNWAYS 10, 19L/R: From DADES on track 225° to LZARD, then on track 268° to cross JKBAL at 6000 and at 230K, then on track 277°.
Expect RADAR vectors to final approach course.

LANDING KPIE/KMCF/KVDF: From DADES on track 186° to GSPAR, then on track 180°.
Expect RADAR vectors to final approach course.