

WAAS
Ch **87099**
W**13A**

APP CRS
130°

Rwy Idg **4559**
TDZE **388**
Apt Elev **390**

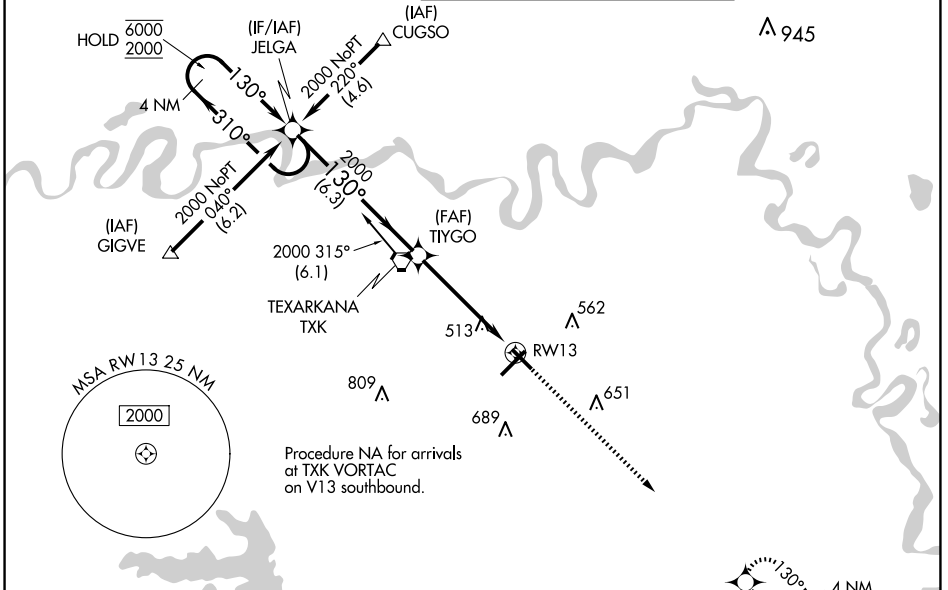
RNAV (GPS) RWY 13
TEXARKANA RGNL-WEBB FLD (TXK)

RNP APCH - GPS.

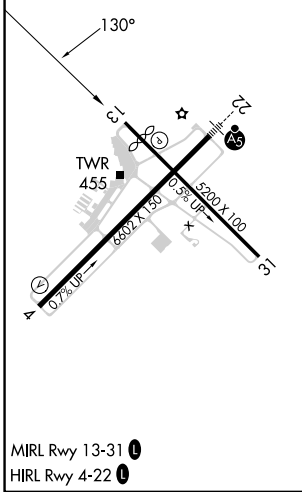
Baro-VNAV and VDP NA when using De Queen altimeter setting. Rwy 13 helicopter visibility reduction below 3/4 SM NA. For uncompensated Baro-VNAV systems, LNAV/VNAV NA below -1.5°C or above 54°C. When local altimeter setting not received, use De Queen altimeter setting and increase LPV DA to 748 feet and all Cats visibility 1/4 SM, LNAV/VNAV DA to 868 feet all Cats visibility 3/8 SM, and all MDAs 100 feet and LNAV and Circling Cats C/D visibility 1/4 SM.

MISSED APPROACH:
Climb to 2000 direct WATLE and hold.

ATIS **120.2** | FORT WORTH CENTER **123.925 269.475** | TEXARKANA TOWER* **123.875** (CTAF) **235.625** | GND CON **119.225**



ELEV 390 | TDZE 388



4 NM Holding Pattern		VGSI and RNAV glidepath not coincident (VGSI Angle 3.00/TCH 48).		2000	WATLE
6000 2000		← 310° → 130° →		2000	
GP 3.00° TCH 54		6.3 NM		3.8 NM	
CATEGORY	A	B	C	D	
LPV DA		648-3/4	260 (300-3/4)		
LNAV/VNAV DA		768-1	380 (400-1)		
LNAV MDA	780-1	392 (400-1)	780-1 1/8	392 (400-1 1/8)	
CIRCLING	820-1 430 (500-1)	900-1 510 (600-1)	1000-1 3/4 610 (700-1 3/4)	1080-2 1/4 690 (700-2 1/4)	

SC-1, 23 JAN 2025 to 20 FEB 2025

SC-1, 23 JAN 2025 to 20 FEB 2025