

WAAS Ch 93899 W04A	APP CRS 040°	Rwy Idg 6602 TDZE 360 Apt Elev 390
--	------------------------	---

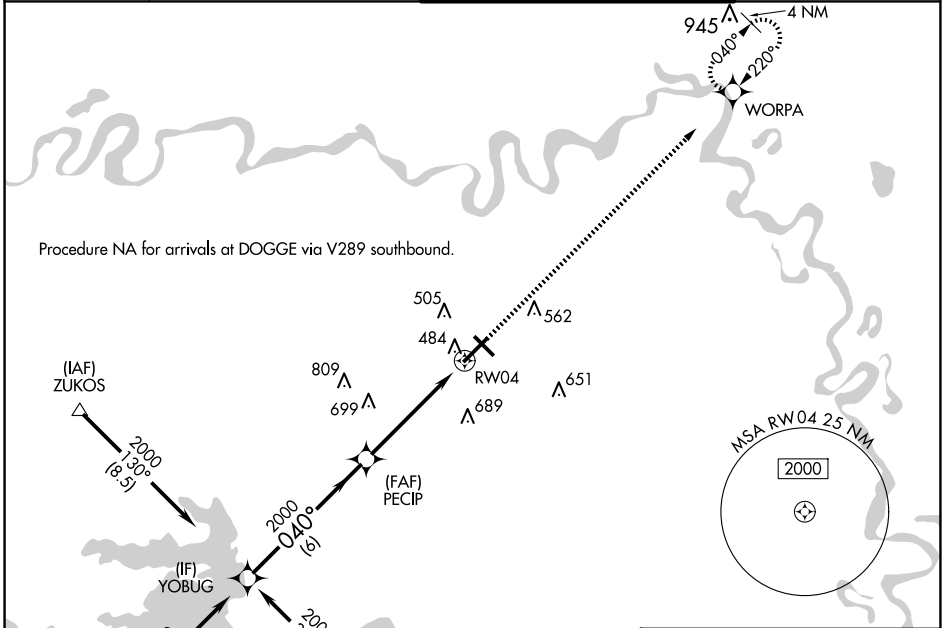
RNAV (GPS) RWY 4

TEXARKANA RGNL-WEBB FLD (TXK)

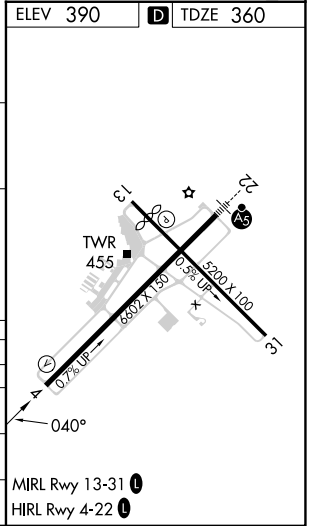
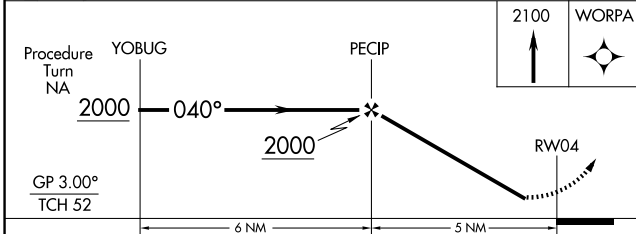
⚠ DME/DME RNP-0.3 NA. Visibility reduction by helicopters NA. For uncompensated Baro-VNAV systems, LNAV/VNAV NA below -15°C (5°F) or above 48°C (118°F). When local altimeter setting not received, use J Lynn Helms Sevier County altimeter setting and increase all DA/MDA 100 feet, increase LPV and LNAV/VNAV all Cats visibility ¼ mile, LNAV and Circling Cat C and D visibility ½ mile. Baro-VNAV NA when using J Lynn Helms Sevier County altimeter setting.

MISSED APPROACH:
Climb to 2100 direct WORPA and hold.

ATIS 120.2	FORT WORTH CENTER 123.925 269.475	TEXARKANA TOWER ★ 123.875 (CTAF) 0 235.625	GND CON 119.225
----------------------	---	--	---------------------------



ELEV 390	D TDZE 360
----------	-------------------



CATEGORY	A	B	C	D
LPV DA	613-1 253 (300-1)			
LNAV/VNAV DA	866-1¾ 506 (500-1¾)			
LNAV MDA	900-1 540 (600-1)	900-1½ 540 (600-1½)		900-1¾ 540 (600-1¾)
CIRCLING	900-1¾ 510 (600-1¾)	1000-2 610 (700-2)	1080-2¼ 690 (700-2¼)	

SC-1, 23 JAN 2025 to 20 FEB 2025

SC-1, 23 JAN 2025 to 20 FEB 2025