

WAAS CH 72617 W24A	APP CRS 237°	Rwy Idg TDZE Apt Elev	4479 374 374
----------------------------------------	------------------------	-----------------------------	-----------------------------------------

RNAV (GPS) RWY 24

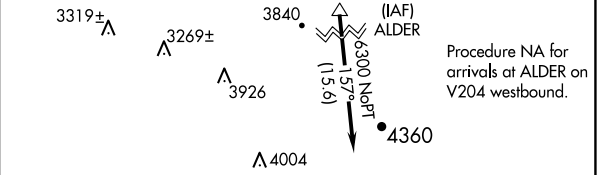
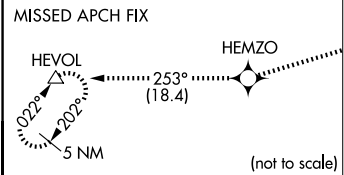
ED CARLSON MEML FLD/SOUTH LEWIS COUNTY (TDO)

NA Baro-VNAV NA. DME/DME RNP-0.3 NA. Helicopter visibility reduction below 1 SM not authorized. Use Chehalis altimeter setting, when not received use Kelseo altimeter setting and increase all DA/MDA 40 feet and increase LPV visibility all Cats ¼ mile. Procedure NA at night.

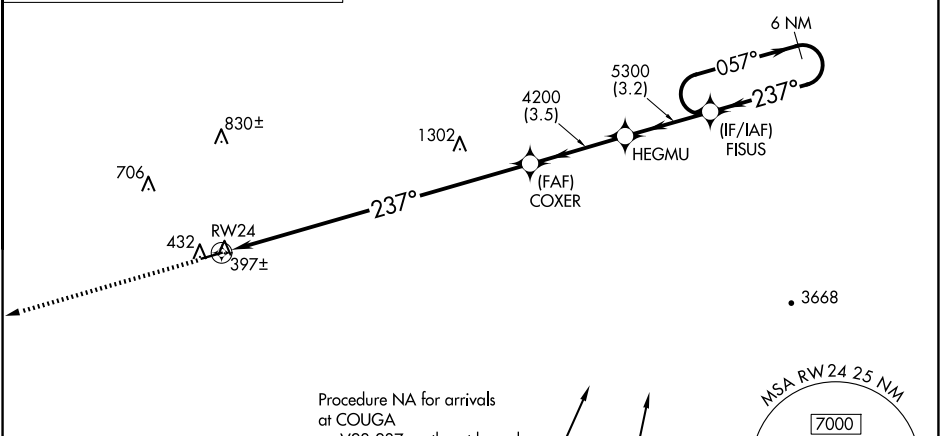
MISSED APPROACH: Climb to 5000 direct HEMZO and on track 253° to HEVOL and hold.

SEATTLE CENTER
124.2 317.6

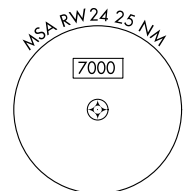
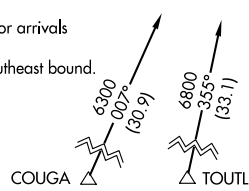
CTAF
122.9



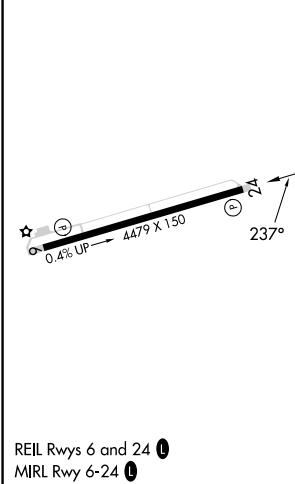
Procedure NA for arrivals at ALDER on V204 westbound.



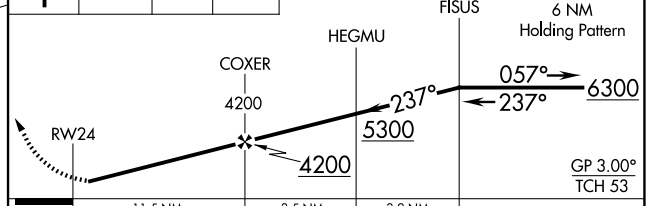
Procedure NA for arrivals at COUGA on V23-287 southeast bound.



ELEV 374	TDZE 374
----------	----------



5000	HEMZO	HEVOL	VGSI and RNAV glidepath not coincident (VGSI Angle 3.00/TCH 44).
↑	✧	tr 253° △	



CATEGORY	A	B	C	D
LPV DA		685-1	311 (400-1)	
LNAV/VNAV DA		802-1½	428 (500-1½)	

NW-1, 23 JAN 2025 to 20 FEB 2025

NW-1, 23 JAN 2025 to 20 FEB 2025