

WAAS CH <b>63140</b> <b>W27A</b>	APP CRS <b>276°</b>	Rwy Idg TDZE Apt Elev	<b>4057</b> <b>1518</b> <b>1519</b>
--	------------------------	-----------------------------	---

# RNAV (GPS) RWY 27

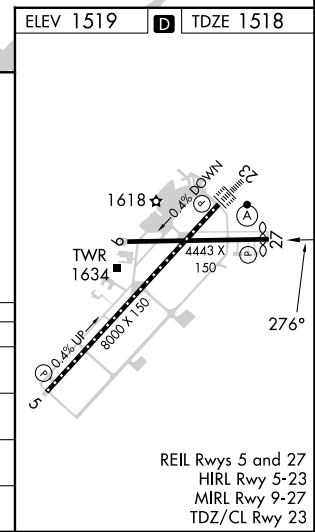
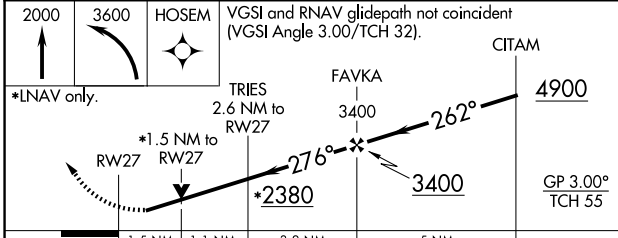
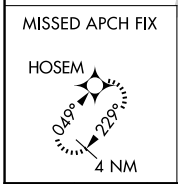
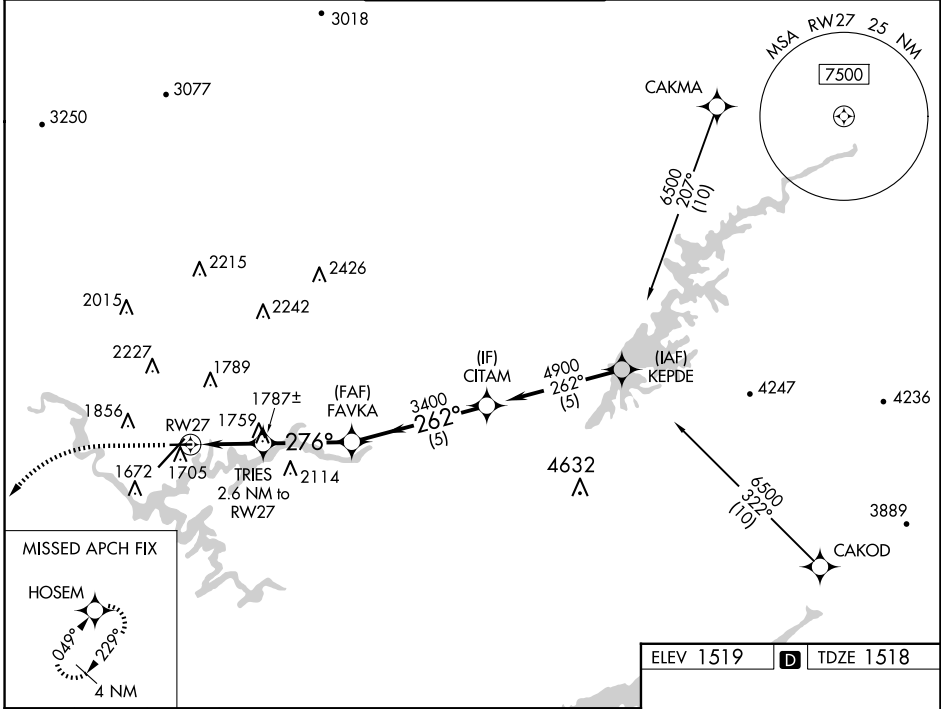
TRI-CITIES (TRI)

RNP APCH.

**⚠** Circling to Rwy 9 NA at night. Circling NA northwest of Rws 9 and 23.  
**⚠** Rwy 27 helicopter visibility reduction below  $\frac{3}{4}$  SM NA. For uncompensated Baro-VNAV systems, LNAV/VNAV NA below -1.4°C or above 54°C.

MISSED APPROACH: Climb to 2000 then climbing left turn to 3600 direct HOSEM and hold.

ATIS <b>118.25</b>	TRI-CITY APP CON ★ <b>134.425 349.0</b>	TRI-CITY TOWER ★ <b>119.5 (CTAF) 257.8</b>	GND CON <b>121.7 348.6</b>	UNICOM <b>122.95</b>
-----------------------	--	---	-------------------------------	-------------------------



SE-1, 23 JAN 2025 to 20 FEB 2025

SE-1, 23 JAN 2025 to 20 FEB 2025