

WAAS CH <b>65726</b> <b>W05A</b>	APP CRS <b>050°</b>	Rwy Idg TDZE Apt Elev	<b>8000</b> <b>1498</b> <b>1519</b>
--	------------------------	-----------------------------	---

# RNAV (GPS) RWY 5

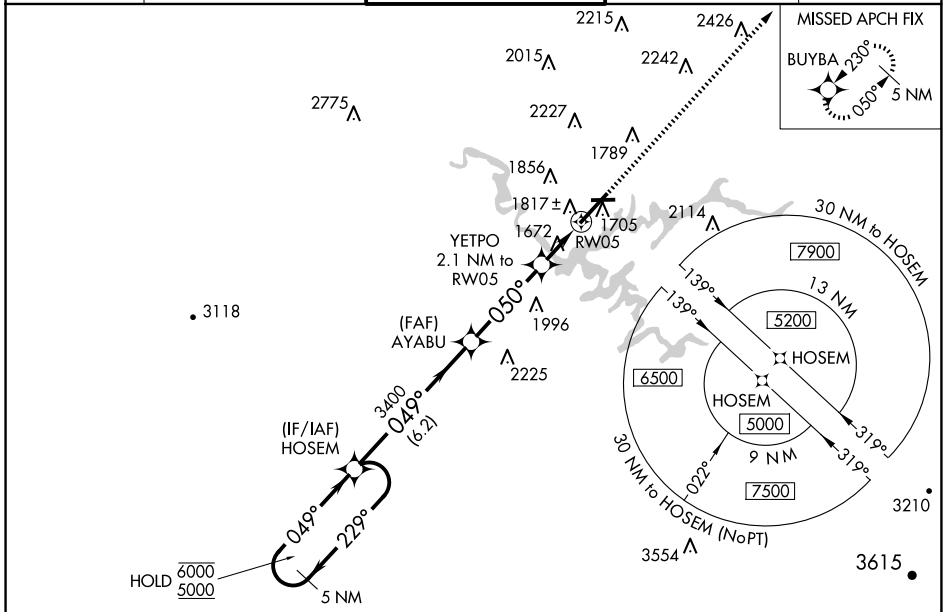
TRI-CITIES (TRI)

RNP APCH.

**⚠** Circling to Rwy 9 NA at night. Circling NA northwest of Rwy 9 and 23. For uncompensated Baro-VNAV systems, LNAV/VNAV NA below -13°C or above 34°C.

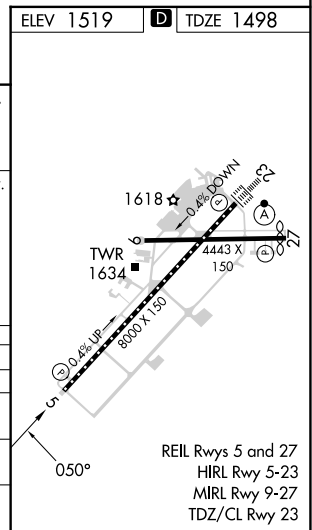
MISSED APPROACH: Climb to 5200 direct BUYBA and hold.

ATIS <b>118.25</b>	TRI-CITY APP CON * <b>134.425 349.0</b>	TRI-CITY TOWER * <b>119.5 (CTAF) 257.8</b>	GND CON <b>121.7 348.6</b>	UNICOM <b>122.95</b>
-----------------------	--	---	-------------------------------	-------------------------



SE-1, 23 JAN 2025 to 20 FEB 2025

SE-1, 23 JAN 2025 to 20 FEB 2025



ELEV 1519	<b>D</b> TDZE 1498
5 NM Holding Pattern	HOSEM
6000 ← 229°	AYABU
5000 → 049°	3400
	YETPO 2.1 NM to RW05
	*2200
	RW05
	*LNAV only.
	6.2 NM
	3.7 NM
	2.1 NM

CATEGORY	A	B	C	D
LPV DA		1698/40	200 (200-¾)	
LNAV/VNAV DA		1998-1¾	500 (500-1¾)	
LNAV MDA	2080/55	582 (600-1)	2080-1¾	582 (600-1¾)
<b>C</b> CIRCLING	2120-1 601 (700-1)	2180-1 661 (700-1)	2320-2¼ 801 (900-2¼)	2500-3 981 (1000-3)