

LOC/DME I-TUS <b>111.7</b> Chan <b>54</b>	APP CRS <b>126°</b>	Rwy Idg <b>10996</b> TDZE <b>2599</b> Apt Elev <b>2643</b>
---	------------------------	--

# ILS or LOC RWY 12

TUCSON INTL (TUS)

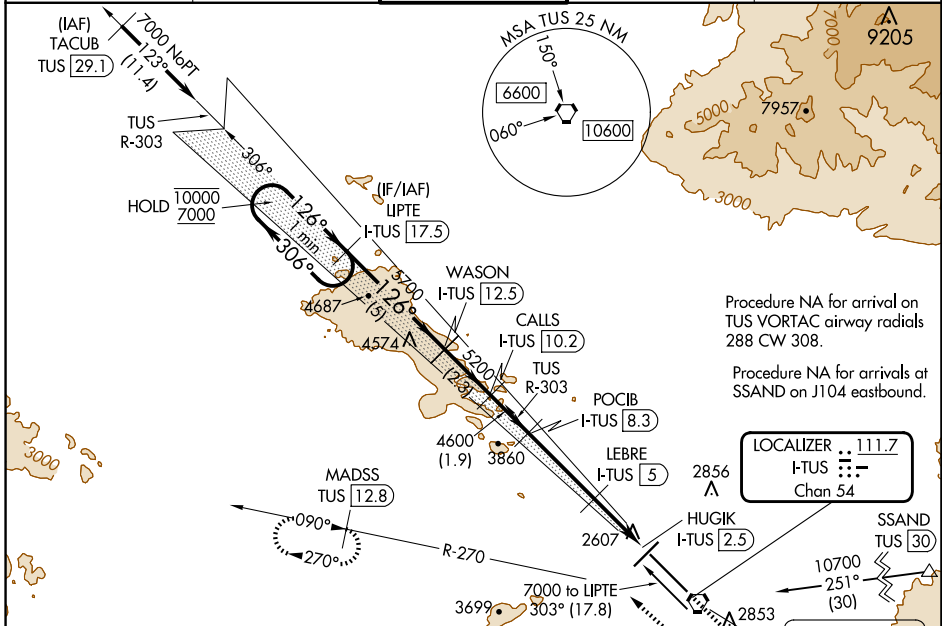
RADAR or DME required. RADAR required for procedure entry at TACUB.



MISSED APPROACH: Climb to 4000 then climbing right turn to 6000 on heading 300° and on TUS VORTAC R-270 to MADSS/TUS 12.8 DME and hold, continue climb in-hold to 6000.

▼ For inop ALS, increase S-ILS 12 Cat E visibility to RVR 4000,  
▲ S-LOC 12 Cat E visibility to 2 ½ SM; LEBRE fix minimums: S-LOC 12 Cat C/D/E visibility to RVR 5500.  
\*RVR 1800 authorized with use of FD or AP or HUD to DA.

ATIS <b>123.8 279.65</b>	TUCSON APP CON <b>119.4 318.1</b>	TUCSON TOWER <b>118.3 257.8</b>	GND CON <b>120.025 348.6</b>	CLNC DEL <b>126.65 326.2</b>
-----------------------------	--------------------------------------	------------------------------------	---------------------------------	---------------------------------



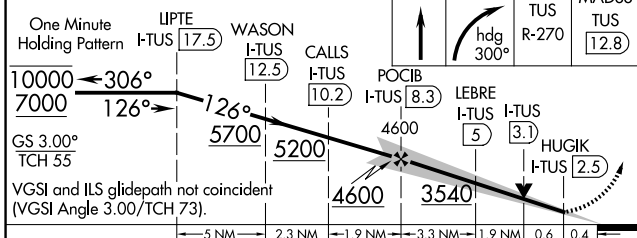
Procedure NA for arrival on TUS VORTAC airway radials 288 CW 308.

Procedure NA for arrivals at SSAND on J104 eastbound.

**LOCALIZER 111.7**  
I-TUS  
Chan 54

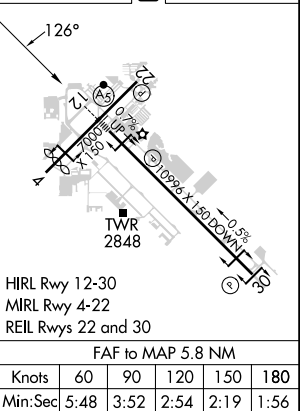
**TUCSON 116.0 TUS**  
Chan 107

Use I-TUS DME when on the localizer course.



ELEV 2643	TDZE 2599
-----------	-----------

CATEGORY	A	B	C	D	E
S-ILS 12*	2799/24 200 (200-½)				
S-LOC 12	3540/40	941 (1000-¾)	3540-2 941 (1000-2)		
CIRCLING	3540-1¼	897 (900-1¼)	3540-2¾ 897 (900-2¾)	3640-3 997 (1000-3)	3900-3 1257 (1300-3)
LEBRE FIX MINIMUMS					
S-LOC 12	2960/24	361 (400-½)	2960/35	361 (400-¾)	
CIRCLING	3160-1 517 (600-1)	3220-1 577 (600-1)	3220-1½ 577 (600-1½)	3640-3 997 (1000-3)	3900-3 1257 (1300-3)



SW-4, 23 JAN 2025 to 20 FEB 2025

SW-4, 23 JAN 2025 to 20 FEB 2025

Knots						60	90	120	150	180
Min:Sec						5:48	3:52	2:54	2:19	1:56