

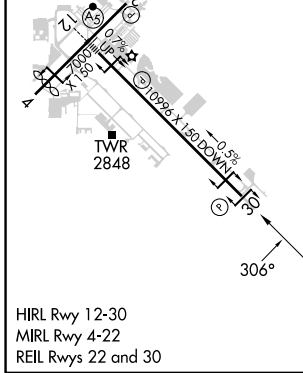
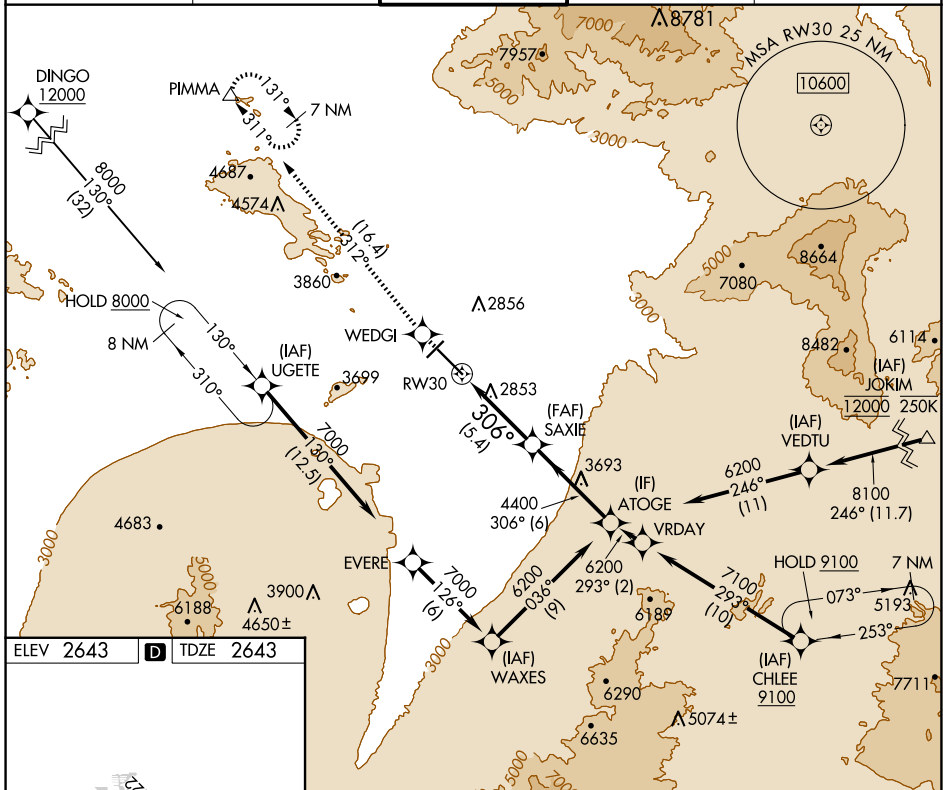
APP CRS <b>306°</b>	Rwy Idg TDZE Apt Elev	<b>10996</b> <b>2643</b> <b>2643</b>
------------------------	-----------------------------	--

# RNAV (RNP) Y RWY 30

TUCSON INTL (TUS)

RNP AR APCH - GPS.	MISSED APPROACH: Climb to 6800 direct WEDGI and on track 312° to PIMMA and hold.
--------------------	--

ATIS <b>123.8 279.65</b>	TUCSON APP CON <b>119.4 318.1</b>	TUCSON TOWER <b>118.3 257.8</b>	GND CON <b>120.025 348.6</b>	CLNC DEL <b>126.65 326.2</b>
-----------------------------	--------------------------------------	------------------------------------	---------------------------------	---------------------------------



6800	WEDGI	PIMMA	VGSI and RNAV glidepath not coincident (VGSI Angle 3.00/TCH 81).	
↑	✦	tr 312°		
SAXIE		ATOGE		
4400		6200		
RW30		306°		GP 3.00°
5.4 NM		6 NM		TCH 53
CATEGORY	A	B	C	D
RNP 0.30 DA	3062-1½ 419 (500-1½)			
<b>AUTHORIZATION REQUIRED</b>				

SW-4, 23 JAN 2025 to 20 FEB 2025

SW-4, 23 JAN 2025 to 20 FEB 2025