

HI-ILS or LOC Z RWY 15

LOC I-RJM 111.7	APCH CRS 146°	Rwy ldg 12,001 TDZE 294 Arpt Elev 294
---------------------------	-------------------------	--

[USAF]

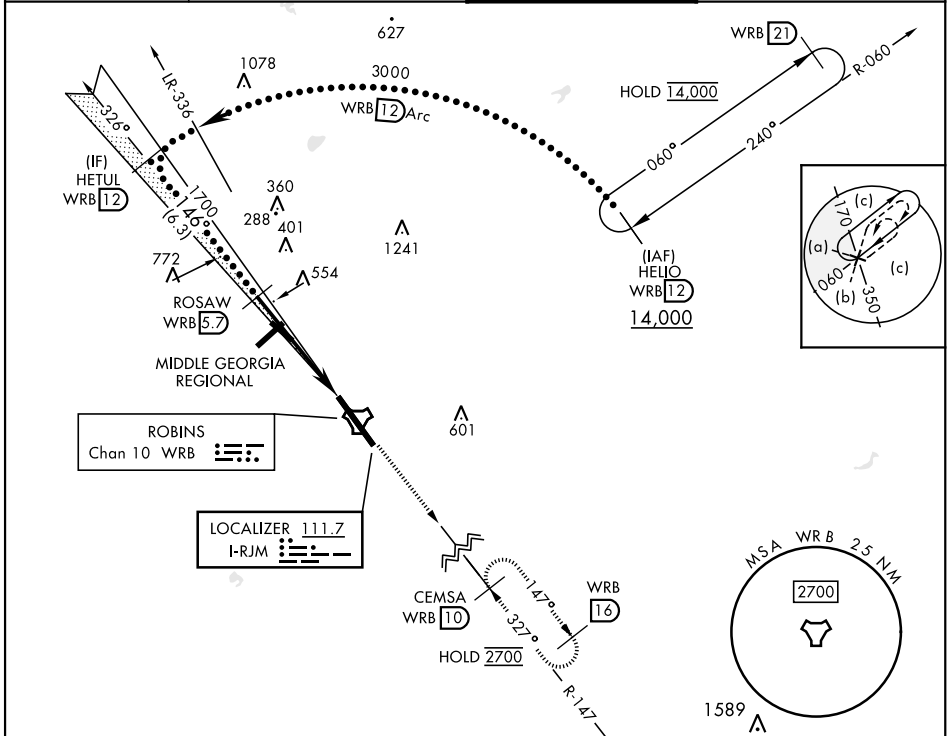
ROBINS AFB (KWRB)

* When ALS inop, increase RVR to 40, vis to 3/4 mile.
 ** When ALS inop, increase vis to 1 1/2 miles.
 *** Circling not authorized SW of Rwy 15-33.



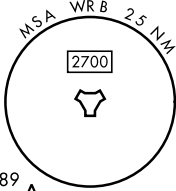
MISSED APPROACH: Climb To 2700 on WRB TACAN R-147 to CEMSA and hold.

ATIS 119.475 273.475	ATLANTA APP CON 124.2 279.6	TOWER 133.225 257.975	GND CON 121.85 275.8
--------------------------------	---------------------------------------	---------------------------------	--------------------------------



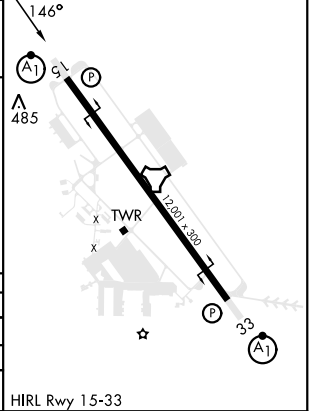
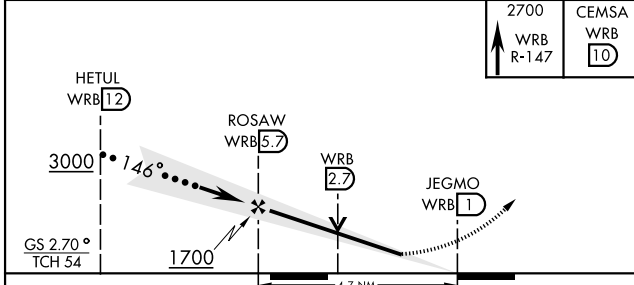
ROBINS
Chan 10 WRB

LOCALIZER 111.7
I-RJM



EMERG SAFE ALT 100 NM 3700

ELEV	294	TDZE	294
------	-----	------	-----



CATEGORY	C	D	E
S-ILS 15*	494/24	200	(200-1/2)
S-LOC 15**	840/60	546	(600-1 1/2)
***	880-1 1/2%	960-2	1040-2 3/4
CIRCLING	586 (600-1 1/2%)	666 (700-2)	746 (800-2 3/4)

HIRL Rwy 15-33

HI-ILS or LOC Z RWY 15

SE-4, 23 JAN 2025 to 20 FEB 2025

SE-4, 23 JAN 2025 to 20 FEB 2025