

HI-TACAN Z RWY 15

TACAN WRB Chan 10	APCH CRS 143°	Rwy ldg 12,001 TDZE 294 Arprt Elev 294
-----------------------------	-------------------------	---

[USAF]

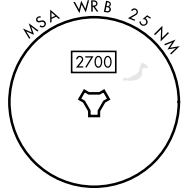
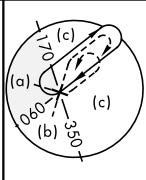
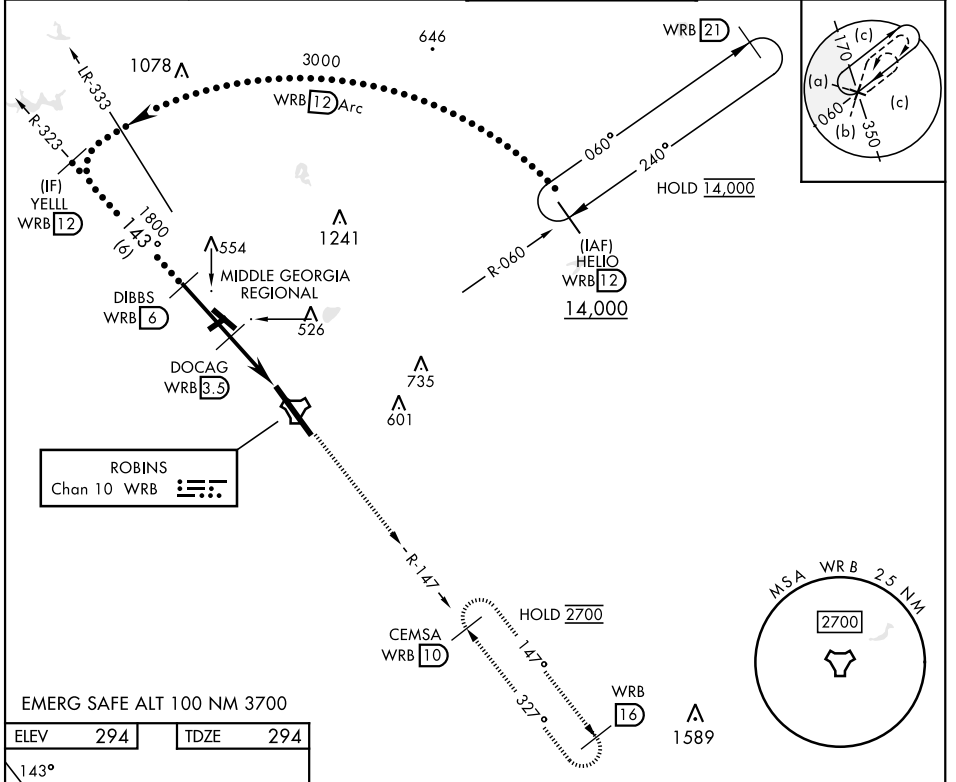
ROBINS AFB (KWRB)

* When ALS inop, increase CAT CDE vis to 1 1/2 miles.
 ** Circling not authorized SW of Rwy 15-33.



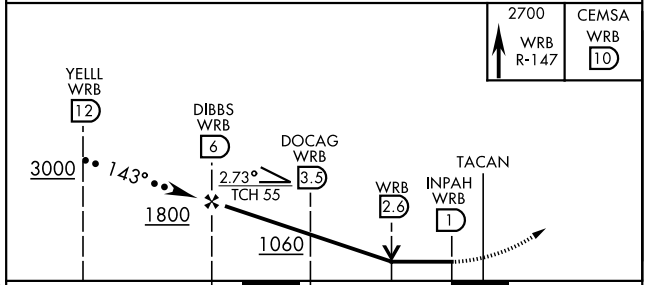
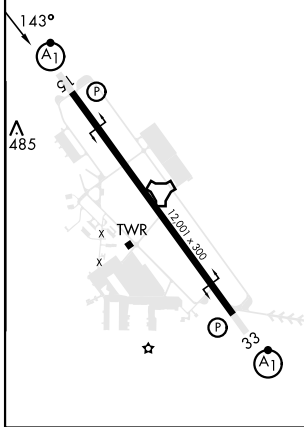
MISSED APPROACH: Climb to 2700 on WRB TACAN R-147 to CEMSA and hold.

ATIS 119.475 273.475	ATLANTA APP CON 124.2 279.6	TOWER 133.225 257.975	GND CON 121.85 275.8
--------------------------------	---------------------------------------	---------------------------------	--------------------------------



EMERG SAFE ALT 100 NM 3700

ELEV 294	TDZE 294
----------	----------



CATEGORY	C	D	E
S-15*	820/55	526	(600-1)
CIRCLING**	880-1 1/2 586 (600-1 1/2)	960-2 666 (700-2)	1040-2 3/4 746 (800-2 3/4)

HI-TACAN Z RWY 15

SE-4, 23 JAN 2025 to 20 FEB 2025

SE-4, 23 JAN 2025 to 20 FEB 2025