

# HI-TACAN Z RWY 33

TACAN WRB Chan <b>10</b>	APCH CRS <b>327°</b>	Rwy ldg <b>12,001</b> TDZE <b>275</b> Arprt Elev <b>294</b>
-----------------------------	-------------------------	---

[USAF]

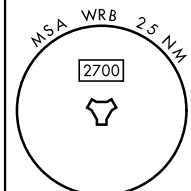
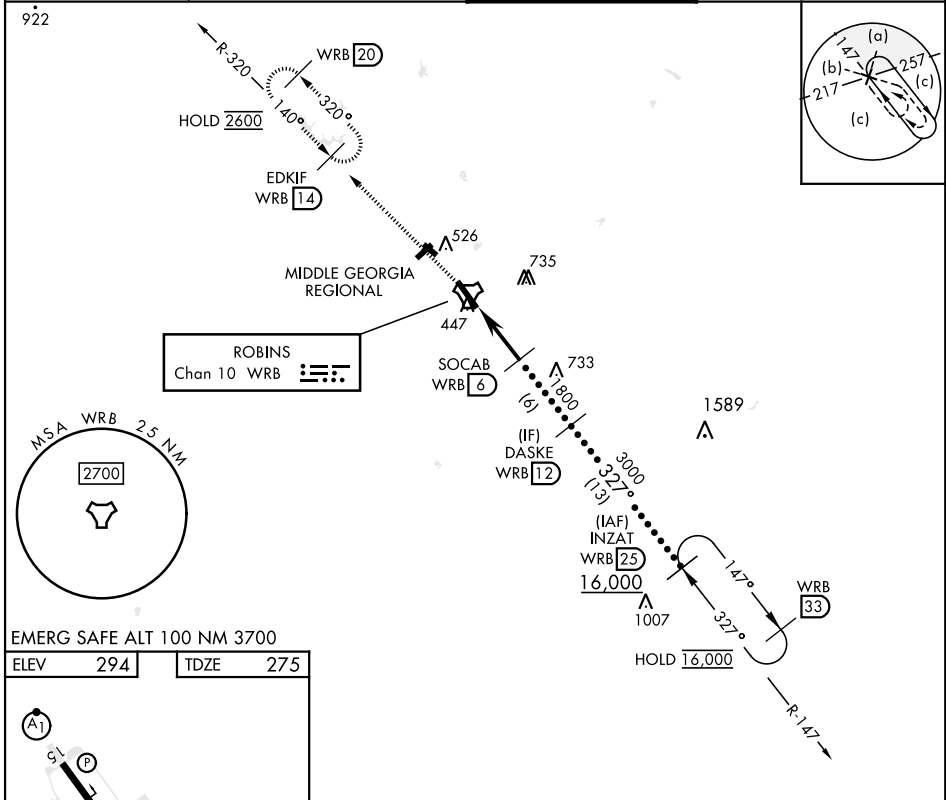
ROBINS AFB (KWRB)

\* When ALS inop, increase CAT CDE vis to 1 3/8 miles.  
 \*\* Circling NA SW of Rwy 15-33.

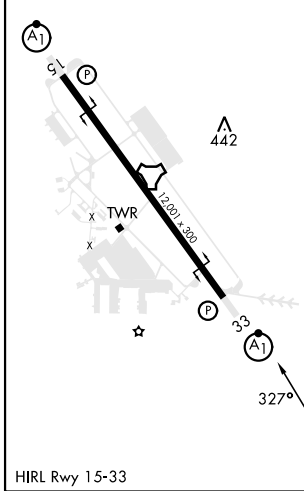


MISSED APPROACH: Climb To 2600 on WRB TACAN R-320 to EDKIF and hold.

ATIS <b>119.475 273.475</b>	ATLANTA APP CON <b>124.2 279.6</b>	TOWER <b>133.225 257.975</b>	GND CON <b>121.85 275.8</b>
--------------------------------	---------------------------------------	---------------------------------	--------------------------------



EMERG SAFE ALT 100 NM 3700
ELEV 294   TDZE 275



2600 WRB R-320	EDKIF WRB 14		INZAT WRB 25
TACAN		SOCAB WRB 6	DASKE WRB 12
CAPMI WRB 1	WRB 2.3	1800	3000
5 NM		16,000	
2.77° TCH 55			
CATEGORY	C	D	E
S-33*	720/45	445	(500- 7/8)
CIRCLING**	880-1 1/2	960-2	1040-2 3/4
	586 (600-1 1/2)	666 (700-2)	746 (800-2 3/4)

# HI-TACAN Z RWY 33

SE-4, 23 JAN 2025 to 20 FEB 2025

SE-4, 23 JAN 2025 to 20 FEB 2025