

# ILS or LOC Y RWY 15

LOC I-RJM <b>111.7</b>	APCH CRS <b>146°</b>	Rwy ldg <b>12,001</b> TDZE <b>294</b> Arprt Elev <b>294</b>
---------------------------	-------------------------	---

[USAF]

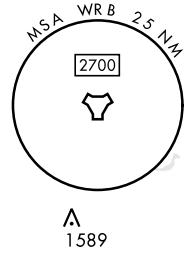
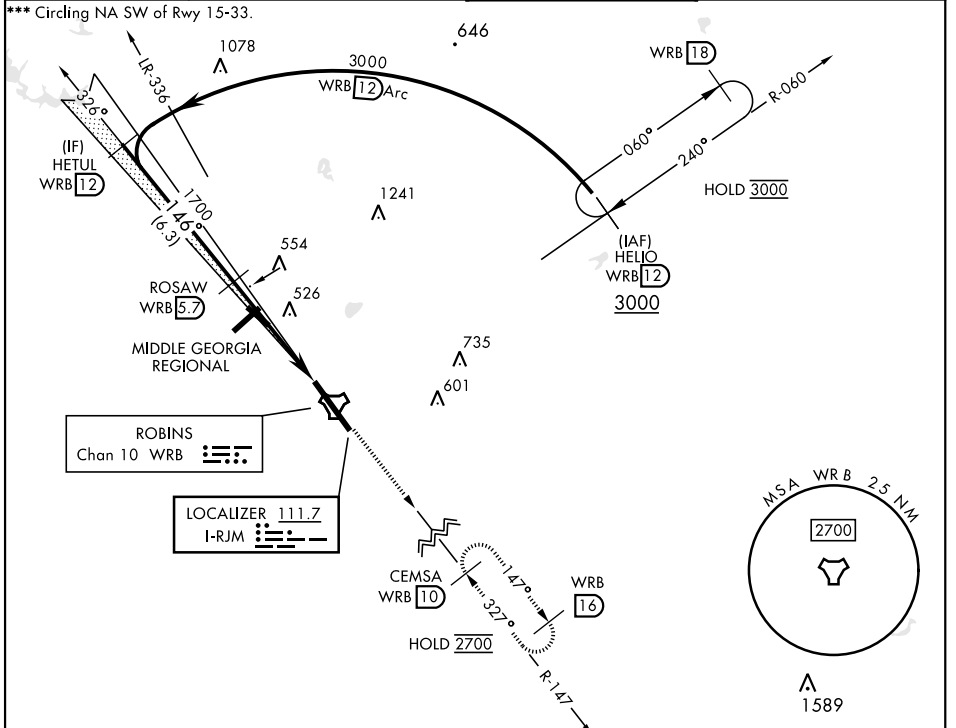
ROBINS AFB (KWRB)

\* When ALS inop, increase RVR to 40, vis to ¼ mile.  
 \*\* When ALS inop, increase CAT AB RVR to 55, vis to 1 mile; CAT CDE vis to 1½ miles.



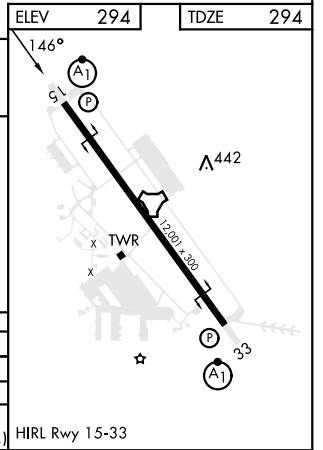
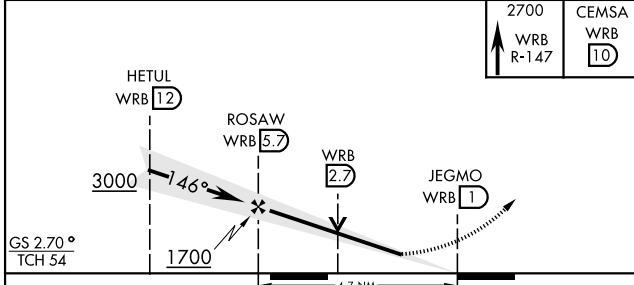
MISSED APPROACH: Climb To 2700 on WRB TACAN R-147 to CEMSA and hold.

ATIS <b>119.475 273.475</b>	ATLANTA APP CON <b>124.2 279.6</b>	TOWER <b>133.225 257.975</b>	GND CON <b>121.85 275.8</b>
--------------------------------	---------------------------------------	---------------------------------	--------------------------------



EMERG SAFE ALT 100 NM 3700

ELEV	294	TDZE	294
------	-----	------	-----



CATEGORY	A	B	C	D	E
S-ILS 15*	494/24		200	(200-½)	
S-LOC 15**	840/24	546 (600-½)	840/60	546	(600-1½)
CIRCLING***	840-1	546 (600-1)	880-1½	960-2	1040-2¾
			586 (600-1½)	666 (700-2)	746 (800-2¾)

HIRL Rwy 15-33

# ILS or LOC Y RWY 15

SE-4, 23 JAN 2025 to 20 FEB 2025

SE-4, 23 JAN 2025 to 20 FEB 2025