

# ILS or LOC Y RWY 33

LOC I-WRB <b>110.1</b>	APCH CRS <b>326°</b>	Rwy Ldg <b>12,001</b>
		TDZE <b>275</b>
		Arpt Elev <b>294</b>

[USAF]

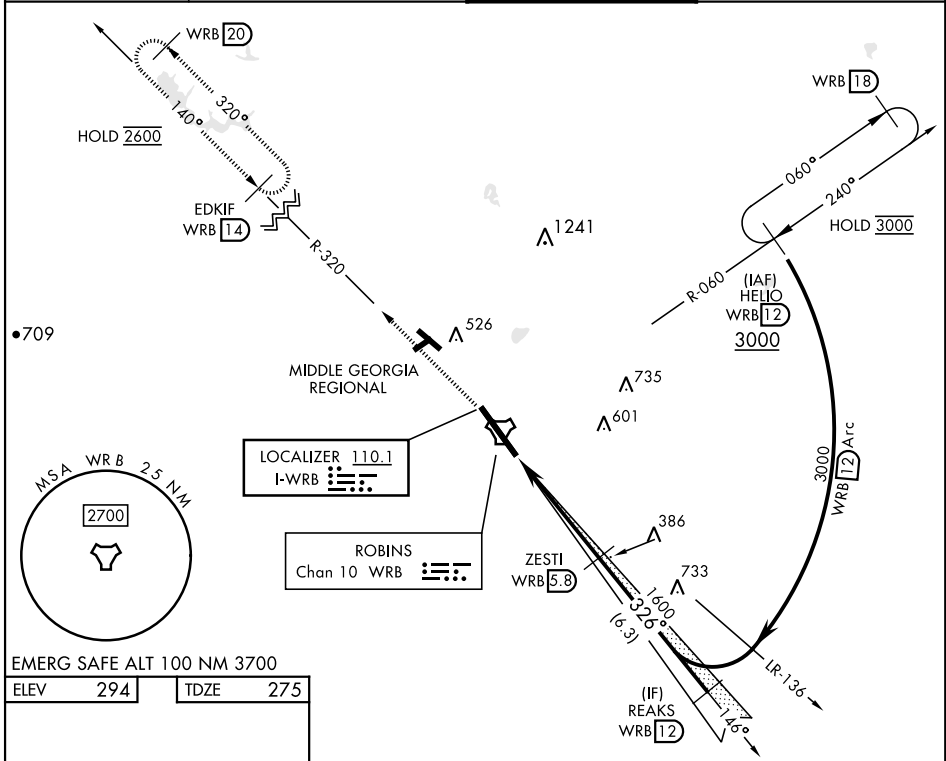
ROBINS AFB (KWRB)

\* When ALS inop, increase RVR to 40, vis to ¾ mile.  
 \*\* When ALS inop, increase RVR to 55, vis to 1 mile.  
 \*\*\* Circling NA SW of Rwy 15-33.



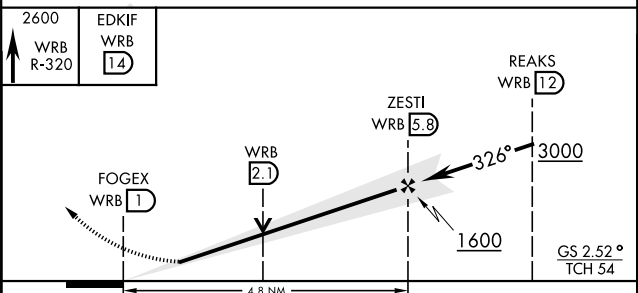
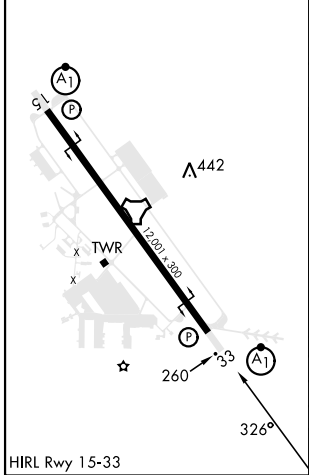
MISSED APPROACH: Climb To 2600 on WRB TACAN R-320 to EDKIF and hold.

ATIS <b>119.475 273.475</b>	ATLANTA APP CON <b>124.2 279.6</b>	TOWER <b>133.225 257.975</b>	GND CON <b>121.85 275.8</b>
--------------------------------	---------------------------------------	---------------------------------	--------------------------------



EMERG SAFE ALT 100 NM 3700

ELEV	294	TDZE	275
------	-----	------	-----



CATEGORY	A	B	C	D	E
S-ILS 33*	475/24		200	(200-½)	
S-LOC 33**	640/24	365 (400-½)	640/35		365 (400-¾)
<input checked="" type="checkbox"/> CIRCLING ***	780-1	486 (500-1)	880-1½ 586 (600-1½)	960-2 666 (700-2)	1040-2¾ 746 (800-2¾)

# ILS or LOC Y RWY 33

SE-4, 23 JAN 2025 to 20 FEB 2025

SE-4, 23 JAN 2025 to 20 FEB 2025