

WAAS CH 53405 W12A	APP CRS 118°	Rwy Idg TDZE 1749 Apt Elev 1749	6898 1749 1749
--	------------------------	---	---

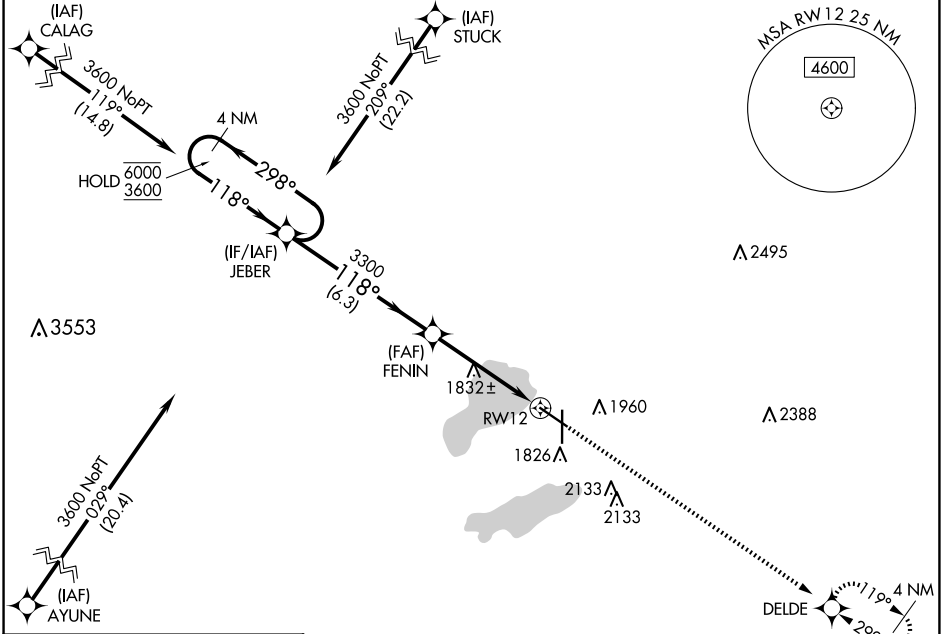
RNAV (GPS) RWY 12

WATERTOWN RGNL (ATY)

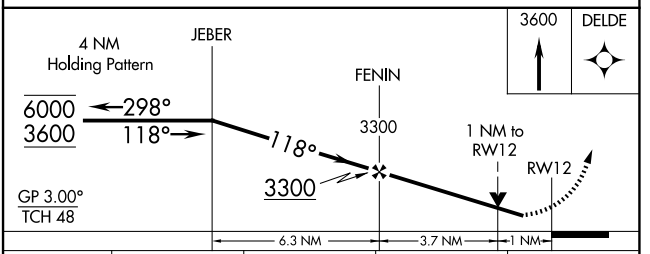
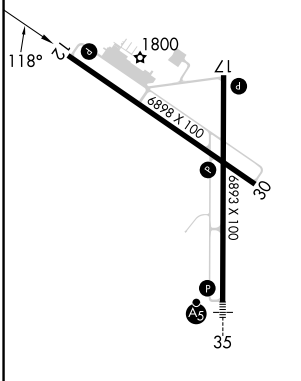
RNP APCH - GPS.
 ▼ Rwy 12 helicopter visibility reduction below 3/4 SM NA.
 ▲ For uncompensated Baro-VNAV systems, LNAV/VNAV NA below -18°C or above 54°C.

MISSED APPROACH: Climb to 3600 direct DELDE and hold.

ASOS 126.625	MINNEAPOLIS CENTER 128.5 306.2	UNICOM 123.05 (CTAF) 0
------------------------	--	----------------------------------



ELEV 1749	D TDZE 1749
-----------	-------------



CATEGORY	A	B	C	D
LPV DA	2021-7/8 272 (300-7/8)			
LNAV/VNAV DA	2076-1 327 (400-1)			
LNAV MDA	2100-1 351 (400-1)			
C CIRCLING	2260-1 511 (600-1)	2500-2 1/4 751 (800-2 1/4)	2500-2 1/2 751 (800-2 1/2)	

REIL Rwy 12, 17 and 30
 HIRL Rwy 17-35
 MIRL Rwy 12-30

NC-1, 23 JAN 2025 to 20 FEB 2025

NC-1, 23 JAN 2025 to 20 FEB 2025