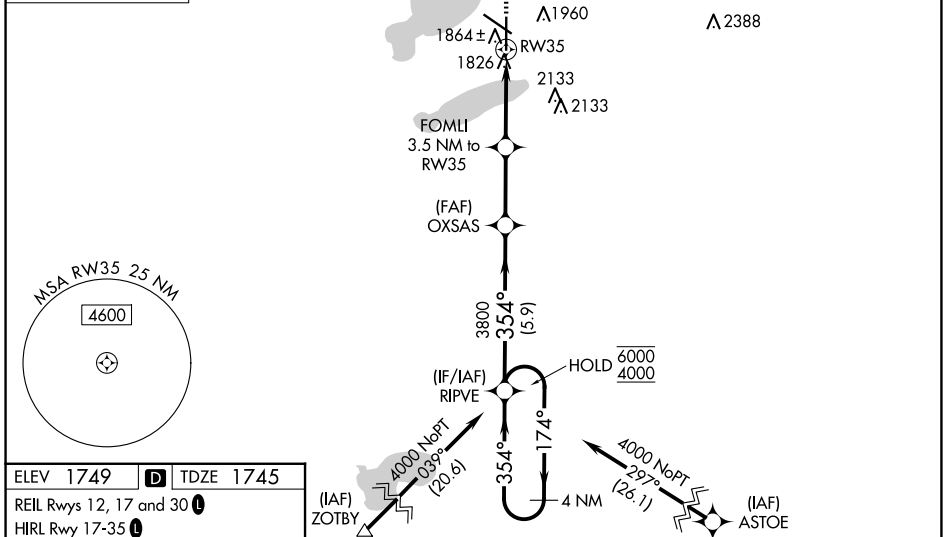
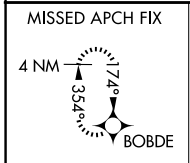


WAAS CH 82614 W35A	APP CRS 354°	Rwy Idg TDZE 1745 Apt Elev 1749
--	------------------------	---

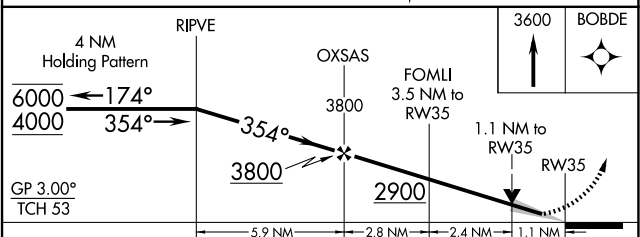
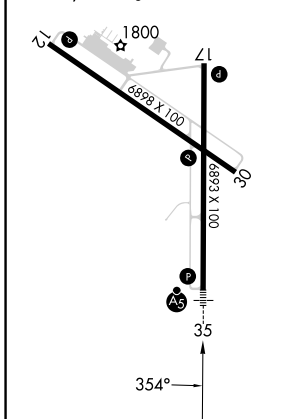
RNAV (GPS) RWY 35

WATERTOWN RGNL (ATY)

RNP APCH - GPS.		MALSR	MISSED APPROACH: Climb to 3600 direct BOBDE and hold.
<p>▼ For uncompensated Baro-VNAV systems, LNAV/VNAV NA below -21°C or above 54°C. For inop ALS, increase LNAV Cat C/D visibility to 1 1/8 SM.</p>			
ASOS 126.625	MINNEAPOLIS CENTER 128.5 306.2	UNICOM 123.05 (CTAF) 0	



ELEV 1749	D	TDZE 1745
REIL Rwy 12, 17 and 30		
HIRL Rwy 17-35		
MIRL Rwy 12-30		



CATEGORY	A	B	C	D
LPV DA		1945-1/2	200 (200-1/2)	
LNAV/VNAV DA		2180-3/4	435 (500-3/4)	
LNAV MDA	2160-1/2	415 (500-1/2)	2160-3/4	415 (500-3/4)
C CIRCLING	2260-1	511 (600-1)	2500-2 1/4 751 (800-2 1/4)	2500-2 1/2 751 (800-2 1/2)

NC-1, 23 JAN 2025 to 20 FEB 2025

NC-1, 23 JAN 2025 to 20 FEB 2025