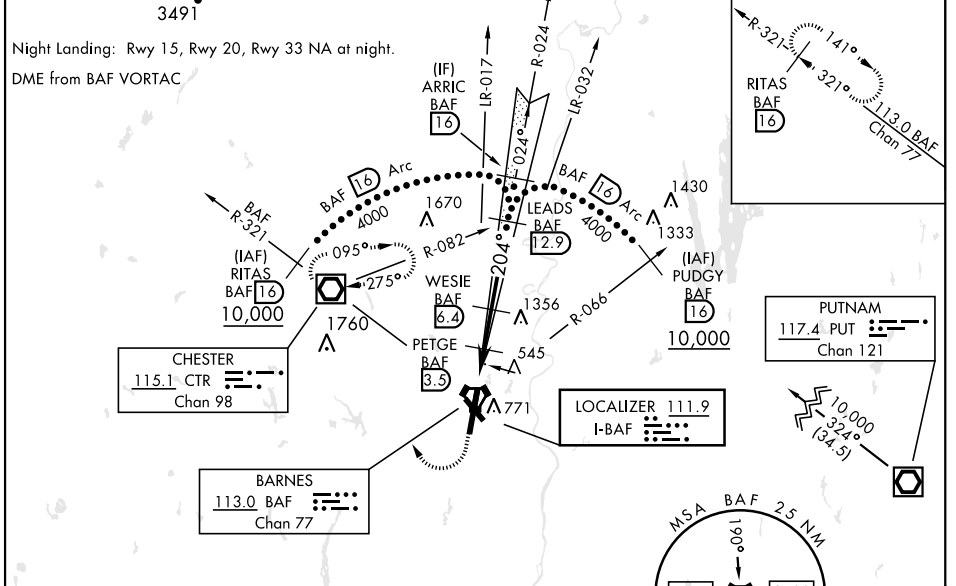


HI-ILS or LOC RWY 20

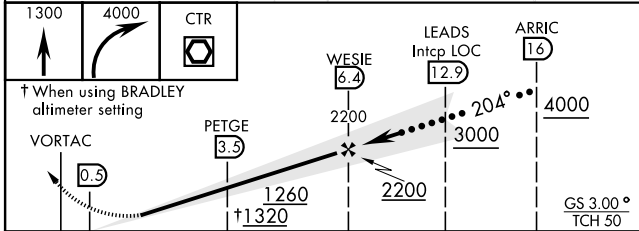
LOC I-BAF 111.9	APCH CRS 204°	Rwy ldg TDZE 8919 270 Arprt Elev 270	AL-446 [USAF]	WESTFIELD-BARNES RGNL (KBAF)
*When ALS inop, increase CAT E vis to 1/4 miles. **When ALS inop, increase CAT CD vis to 1/2 miles, CAT E vis to 3 miles.		MALSRR	MISSED APPROACH: Climb to 1300, then climbing right turn to 4000 direct CTR VOR/DME and hold, continue climb in hold to 4000. (TACAN actf climb to 1300, then climbing right turn to 4000 via hdg 010° and BAF VORTAC R-321 to RITAS and hold.)	

ATIS 127.1 263.15	BRADLEY APP CON 125.35 281.5	WESTFIELD TOWER ★ 118.9 (CTAF) 0 251.1	GND CON 121.7 289.4
-----------------------------	--	--	-------------------------------

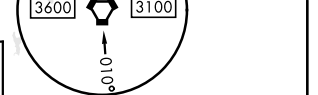
*** When ALS inop, increase CAT E vis to 3 miles.
When local altimeter setting not received, use Bradley Intl altimeter setting.
3491



EMERG SAFE ALT 100 NM 7000



CATEGORY	C	D	E
S-ILS 20*	520/50	250	(300-1)
S-LOC 20**	800/55	530	(600-1/4)
C CIRCLING	1160-2 ^{3/4}	890 (900-2 ^{3/4})	1660-3 1390 (1400-3)
BRADLEY INTL ALTIMETER			
S-ILS 20*	564/50	294	(300-1)
S-LOC 20***	860-1/4	590	(600-1/4)
C CIRCLING	1200-2 ^{3/4} 930 (1000-2 ^{3/4})	1200-3 930 (1000-3)	1680-3 1410 (1500-3)



ELEV 270	TDZE 270
Rwy 15 ldg 4510'	Rwy 20 ldg 8919'
REIL Rwy 15 MIRL Rwy 15-33 HIRL Rwy 2-20	
FAF to MAP 5.9 NM	
Knots	120 140 160 180 200
Min:Sec	2:57 2:32 2:13 1:58 1:46

HI-ILS or LOC RWY 20

NE-1, 23 JAN 2025 to 20 FEB 2025

NE-1, 23 JAN 2025 to 20 FEB 2025