

BAF VORTAC 113.0 Chan 77	APP CRS 208°	Rwy Idg 8919 TDZE 270 Apt Elev 270
---------------------------------------	------------------------	---

VOR RWY 20

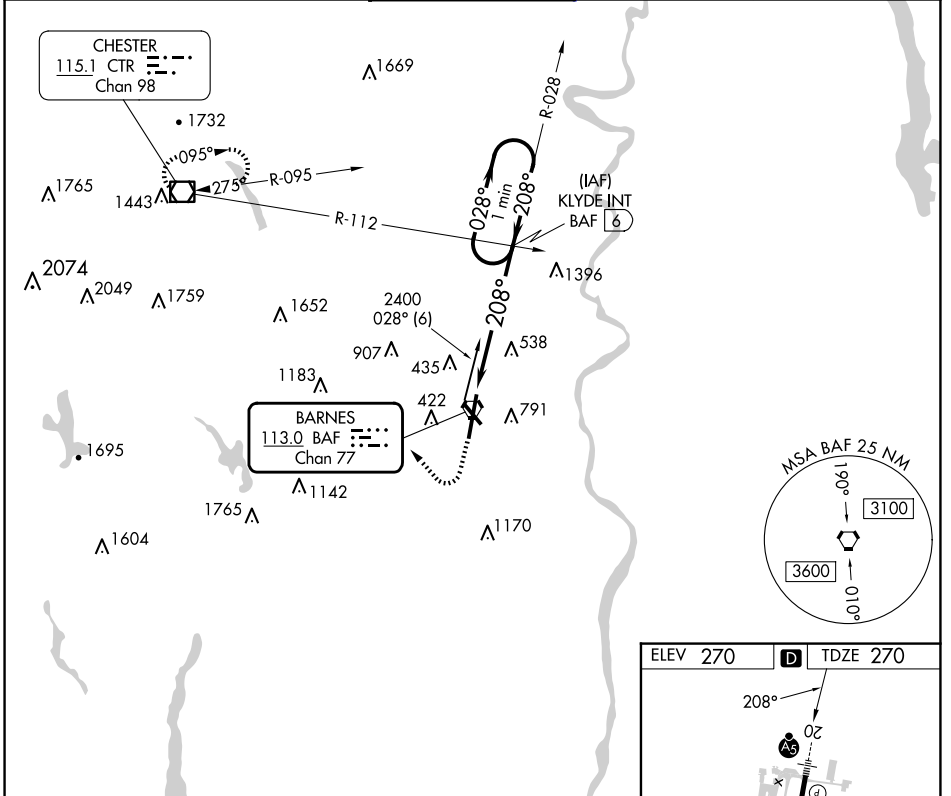
WESTFIELD-BARNES RGNL (BAF)

⚠ For inoperative MALS, increase Cat A/B visibility to RVR 5000. Night landing: Rwy 15 NA.

MALS

MISSING APPROACH: Climb to 1200, then climbing right turn to 4000 direct CTR VOR/DME and hold, continue climb in hold to 4000.

ATIS 127.1 263.15	BRADLEY APP CON 125.35 281.5	WESTFIELD TOWER* 118.9 (CTAF) 0 251.1	GND CON 121.7 289.4	CLNC DEL 121.7
-----------------------------	--	---	-------------------------------	--------------------------



NE-1, 23 JAN 2025 to 20 FEB 2025

NE-1, 23 JAN 2025 to 20 FEB 2025

