

BAF VORTAC 113.0 Chan 77	APP CRS 025°	Rwy Idg TDZE 264 Apt Elev 270
---------------------------------------	------------------------	---

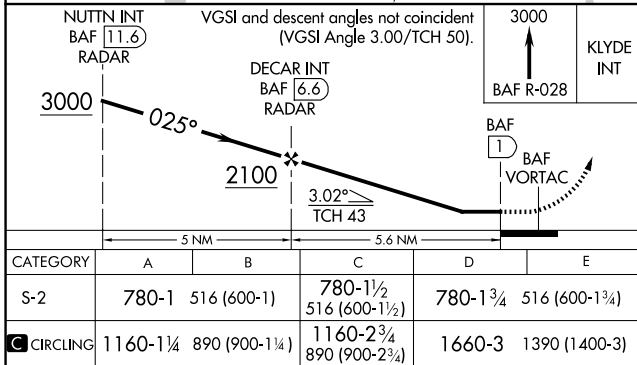
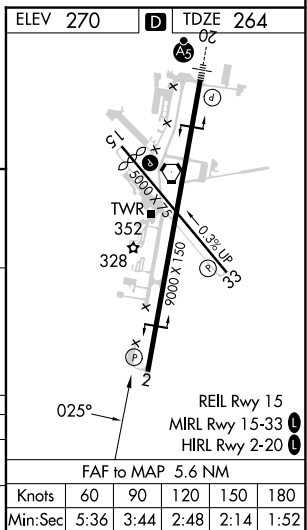
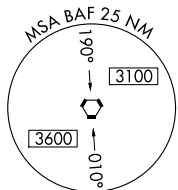
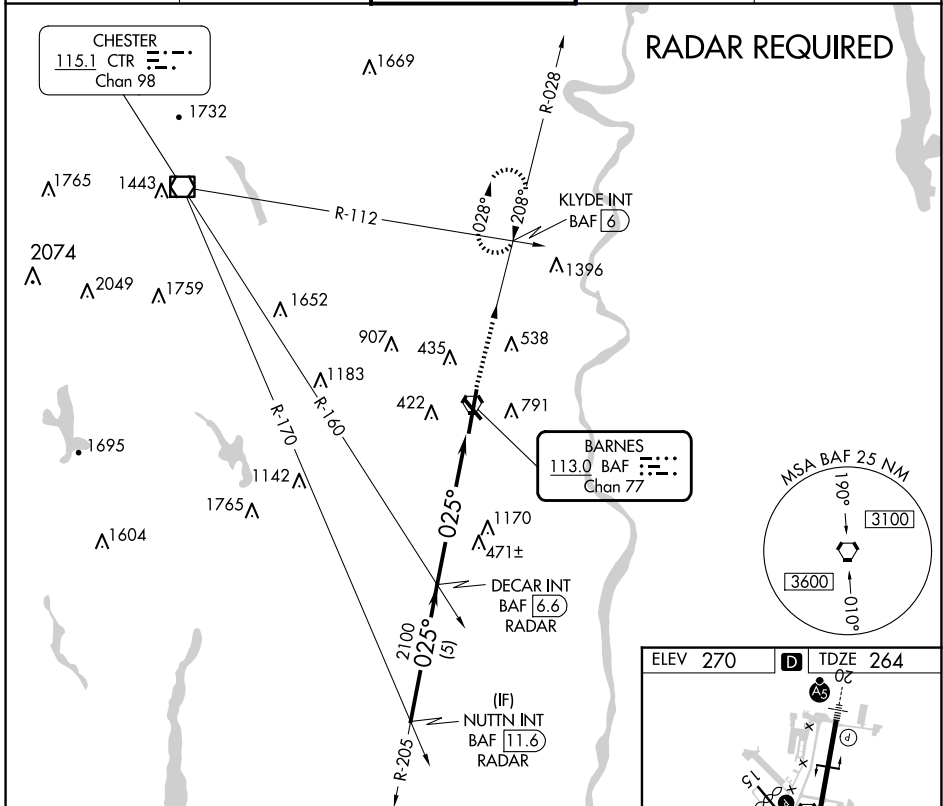
VOR or TACAN RWY 2

WESTFIELD-BARNES RGNL (BAF)

⚠ Night landing: Rwy 15 NA.
⚠ Helicopter visibility reduction below ¾ SM NA.

MISSED APPROACH: Climb to 3000 via the BAF VORTAC R-028 to KLYDE INT and hold.

ATIS 127.1 263.15	BRADLEY APP CON 125.35 281.5	WESTFIELD TOWER* 118.9 (CTAF) 0 251.1	GND CON 121.7 289.4	CLNC DEL 121.7
-----------------------------	--	--	-------------------------------	--------------------------



NE-1, 23 JAN 2025 to 20 FEB 2025

NE-1, 23 JAN 2025 to 20 FEB 2025