

LOC I-GMX 111.55	APP CRS 238°	Rwy Idg 8016 TDZE 26 Apt Elev 32
----------------------------	------------------------	---

ILS Y RWY 24 (SA CAT I & II)

WILMINGTON INTL (ILM)

ADF required. SA CAT I: Requires specific OPSPEC, MSPEC, or LOA approval and use of HUD to DH. **SA CAT II:** Reduced lighting: requires specific OPSPEC, MSPEC, or LOA approval and use of autoland or HUD to touchdown. Procedure NA when tower closed.

MALS R

MISSED APPROACH: Climb to 500 then climbing right turn to 1800 direct WILZE LOM and hold.

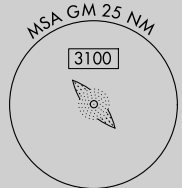
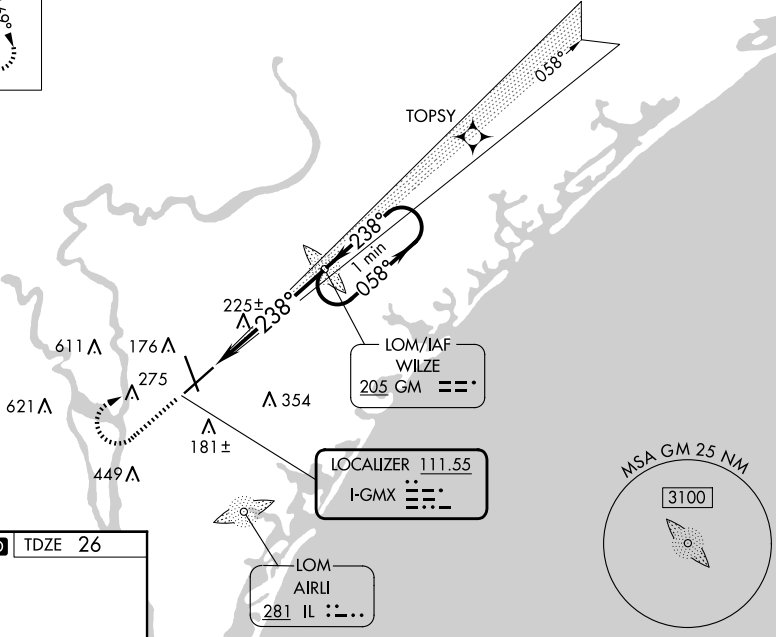
ATIS 124.975	WILMINGTON APP CON★ 118.25 284.65 (164°-343°) 135.75 317.425 (344°-163°)	WILMINGTON TOWER★ 119.9 (CTAF) 0 239.3	GND CON 121.9 348.6	CLNC DEL 120.875	UNICOM 122.95
------------------------	--	---	-------------------------------	----------------------------	-------------------------

ALTERNATE MISSED APCH FIX

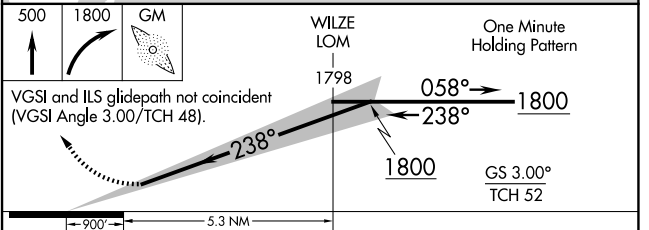
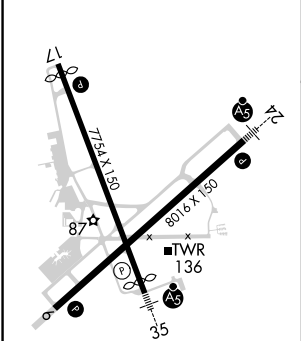
AIRLI
IL : - . . .
281

RNAV 1-GPS or RADAR REQUIRED

1042 Δ



ELEV 32	D	TDZE 26
---------	----------	---------



CATEGORY	A	B	C	D
S-ILS 24		SA CAT I RA 151/14	150 DA 176	
S-ILS 24		SA CAT II RA 108/12	100 DA 126	

HIRL Rwy 6-24 and 17-35 **0**
REIL Rwy 6 and 17 **0**

FAF to MAP 5.3 NM

Knots	60	90	120	150	180
Min:Sec	5:18	3:32	2:39	2:07	1:46

SA CATEGORY I & II ILS SPECIAL AIRCREW & AIRCRAFT CERTIFICATION REQUIRED

SE-2, 23 JAN 2025 to 20 FEB 2025

SE-2, 23 JAN 2025 to 20 FEB 2025