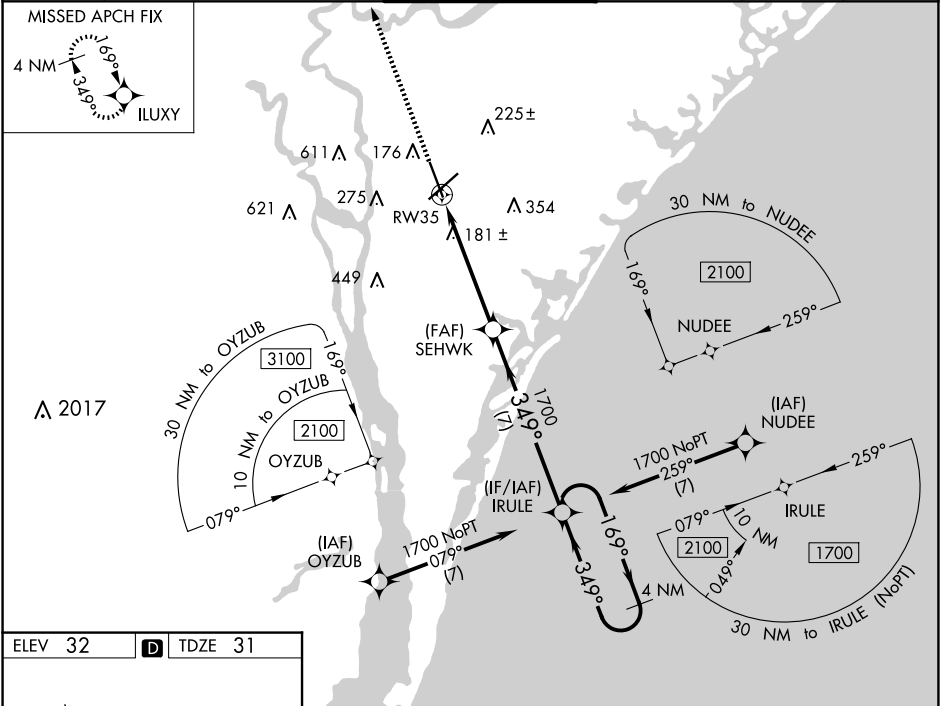


WAAS CH 50499 W35A	APP CRS 349°	Rwy Idg 7204 TDZE 31 Apt Elev 32
--	------------------------	---

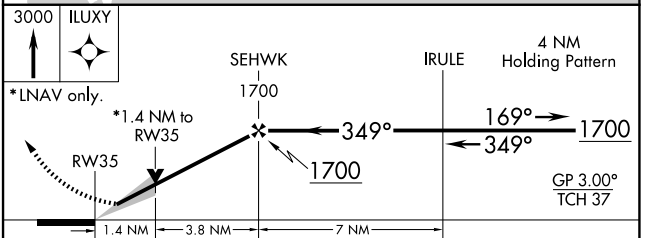
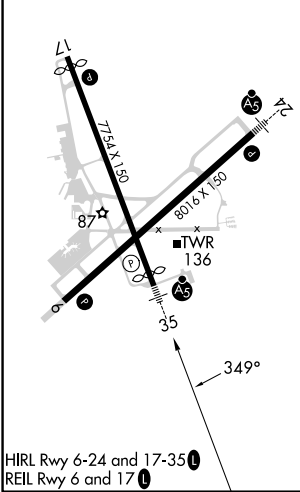
RNAV (GPS) RWY 35

WILMINGTON INTL (ILM)

⚠ For uncompensated Baro-VNAV systems, LNAV/VNAV NA below -7°C (20°F) or above 54°C (130°F). DME/DME RNP-0.3 NA. For inop ALS, increase LNAV Cats C/D visibility to 1½ SM.	MALSR 	MISSED APPROACH: Climb to 3000 direct ILUXY and hold.			
ATIS 124.975	WILMINGTON APP CON* 118.25 284.65 (164°-343°) 135.75 317.425 (344°-163°)	WILMINGTON TOWER* 119.9 (CTAF) 0 239.3	GND CON 121.9 348.6	CLNC DEL 120.875	UNICOM 122.95



ELEV 32	D	TDZE 31
---------	----------	---------



CATEGORY	A	B	C	D
LPV DA	242/24		211 (300-½)	
LNAV/VNAV DA	426/45		395 (400-¾)	
LNAV MDA	500/24 469 (500-½)		500/50 469 (500-1)	
C CIRCLING	560-1 528 (600-1)		720-2 688 (700-2) 920-3 888 (900-3)	

SE-2, 23 JAN 2025 to 20 FEB 2025

SE-2, 23 JAN 2025 to 20 FEB 2025