

WAAS CH <b>93831</b> <b>W13A</b>	APP CRS <b>132°</b>	Rwy Idg TDZE Apt Elev	<b>5003</b> <b>2822</b> <b>2822</b>
--	------------------------	-----------------------------	---

# RNAV (GPS) RWY 13

WINKLER COUNTY (INK)

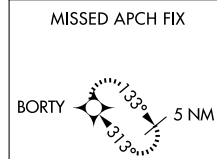
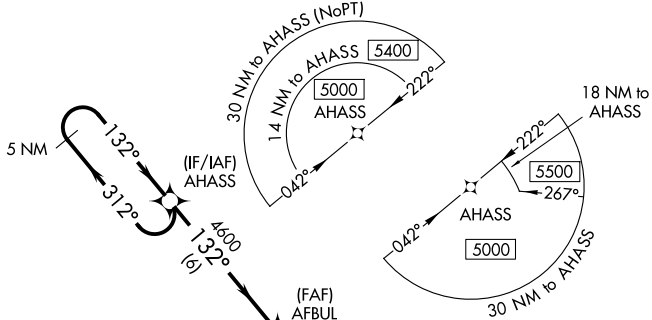
RNP APCH - GPS.

**⚠** Baro-VNAV NA when using Pecos altimeter setting. For uncompensated Baro-VNAV systems, LNAV/VNAV NA below -20°C or above 54°C. VDP NA with Pecos altimeter setting. Rwy 13 helicopter visibilities reduction below 3/4 SM NA. When local altimeter setting not received, use Pecos altimeter setting: increase LPV DA to 3167 feet and all Cats visibilities 1/4 SM; increase LNAV/VNAV DA to 3167 feet and all Cats visibilities 1/4 SM; increase all MDAs 100 feet and LNAV Cat C visibility 3/8 SM and Circling Cat C visibility 1/4 SM.

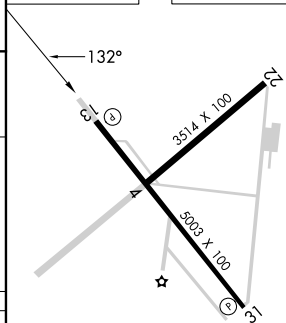
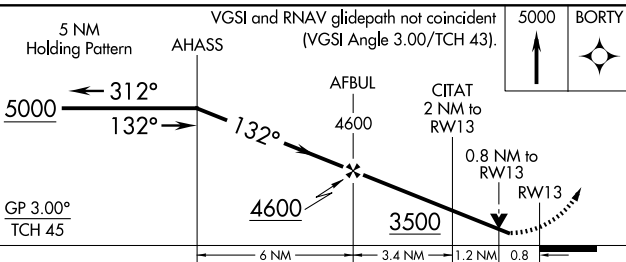
**MISSED APPROACH:**  
Climb to 5000 direct BORTY and hold.

ASOS <b>118.325</b>	FORT WORTH CENTER <b>133.1 298.95</b>	UNICOM <b>123.0 (CTAF) 0</b>
------------------------	--	---------------------------------

3626 **△**



ELEV 2822	TDZE 2822
-----------	-----------



CATEGORY	A	B	C	D
LPV DA	3072-3/4	250 (300-3/4)		NA
LNAV/VNAV DA	3072-3/4	250 (300-3/4)		NA
LNAV MDA	3320-1	498 (500-1)	3320-1 3/8 498 (500-1 3/8)	NA
CIRCLING	3320-1	498 (500-1)	3580-2 1/4 758 (800-2 1/4)	NA

MIRL Rwy 4-22 and 13-31 **0**