

METRO FOUR DEPARTURE  
(METRO4.DXO) 05SEP24

DETROIT, MICHIGAN  
WILLOW RUN (Y1P)

ATIS 127.425  
GND CON  
119.975  
WILLOW RUN TOWER  
125.275 256.9

RADAR required. DME required.

TOP ALTITUDE:  
3000

**TAKEOFF MINIMUMS**

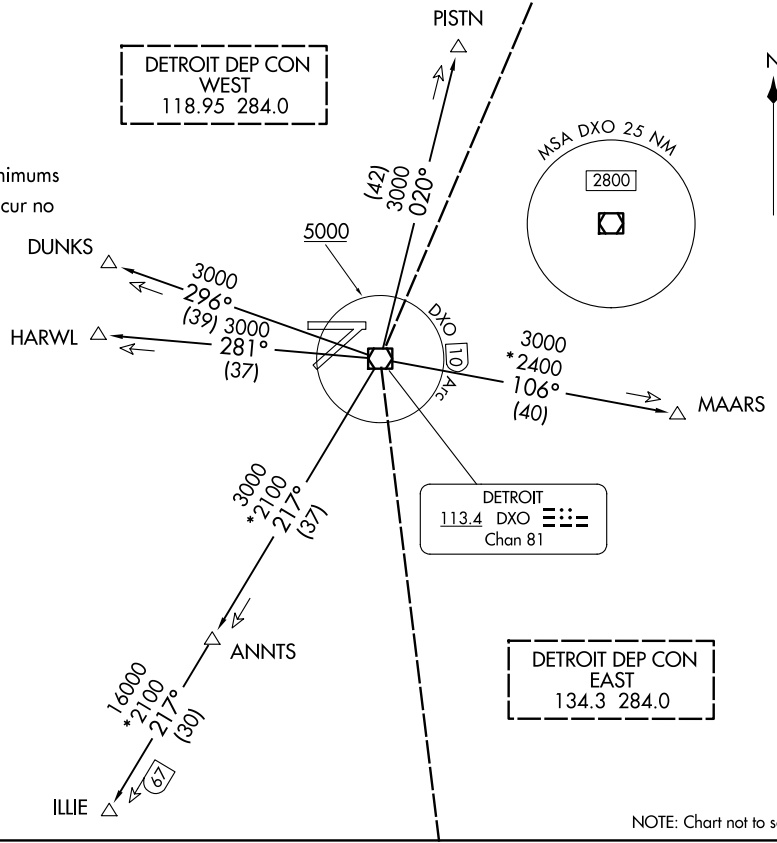
Rwys 5, 9, 23: Standard.  
Rwy 27: 300-1½ or standard with a minimum climb of 209'  
per NM to 1000, or alternatively, with standard takeoff minimums  
and a normal 200' per NM climb gradient, takeoff must occur no  
later than 1300' prior to departure end of runway.

NOTE: For use by non-RNAV equipped aircraft only.  
NOTE: When using this departure, file the appropriate  
depicted departure fix and route. Aircraft over  
HARWL must file FL220 and below. Aircraft landing  
Cleveland (CLE) must file MAARS transition.  
Turbojet departures at/above 10000, maintain  
280K until advised by ATC. If unable, advise ATC  
prior to departure.

**SPECIAL INSTRUCTIONS:**

For appropriate departure control frequency, see graphic.  
Use frequency depicted within the sector where first  
navaid/fix for your route is located (sectors indicated by  
dashed lines; frequencies in dashed box within).

(CONTINUED ON FOLLOWING PAGE)



NOTE: Chart not to scale.

METRO FOUR DEPARTURE  
(METRO4.DXO) 24249

AL-467 (FAA)

WILLOW RUN (Y1P)  
DETROIT, MICHIGAN



DEPARTURE ROUTE DESCRIPTION

TAKEOFF ALL RUNWAYS: Climb on assigned heading. Maintain ATC assigned altitude for RADAR vectors to intercept filed/assigned transition or enroute fix/navaid. When ATC assigned altitude is at or above 5000, cross DXO 10 DME Arc at or above 5000 for noise abatement. If unable to comply, advise ATC prior to departure. Expect clearance to filed altitude/flight level within ten (10) minutes after departure.

DUNKS TRANSITION (METRO4.DUNKS): From over DXO VOR/DME on DXO R-296 to DUNKS.

HARWL TRANSITION (METRO4.HARWL): From over DXO VOR/DME on DXO R-281 to HARWL.

ILLIE TRANSITION (METRO4.ILLIE): From over DXO VOR/DME on DXO R-217 to ILLIE.

MAARS TRANSITION (METRO4.MAARS): From over DXO VOR/DME on DXO R-106 to MAARS.

PISTN TRANSITION (METRO4.PISTN): From over DXO VOR/DME on DXO R-020 to PISTN.

EC-1, 23 JAN 2025 to 20 FEB 2025

EC-1, 23 JAN 2025 to 20 FEB 2025