

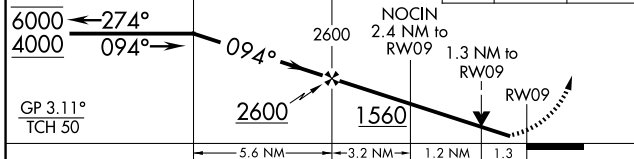
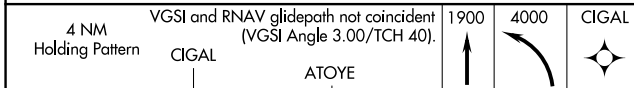
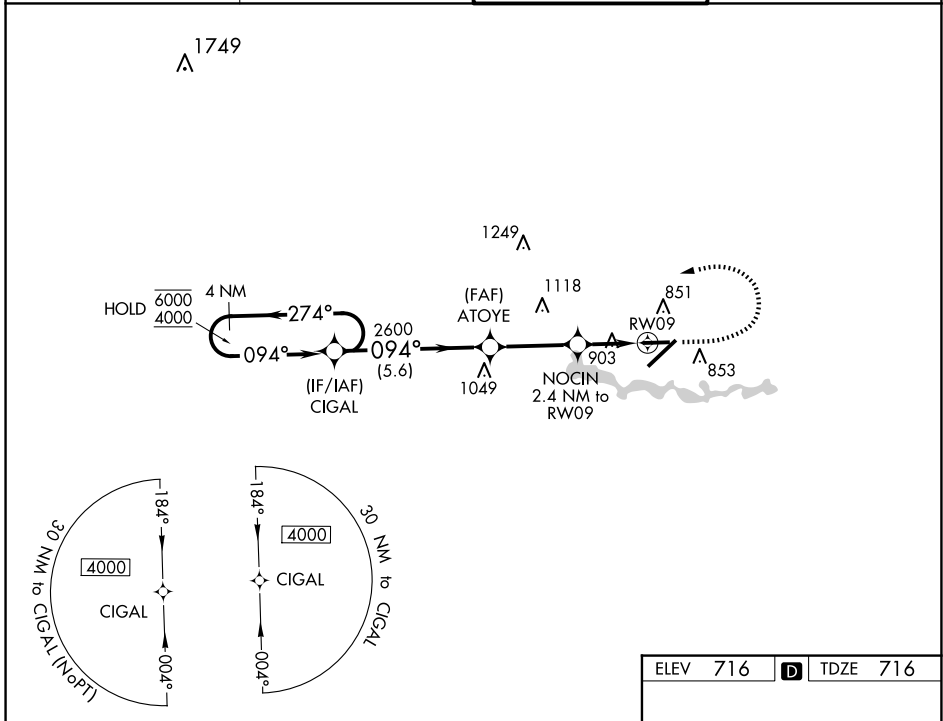
WAAS CH 73035 W09A	APP CRS 094°	Rwy Idg TDZE Apt Elev	5001 716 716
--	------------------------	-----------------------------	---

RNAV (GPS) RWY 9

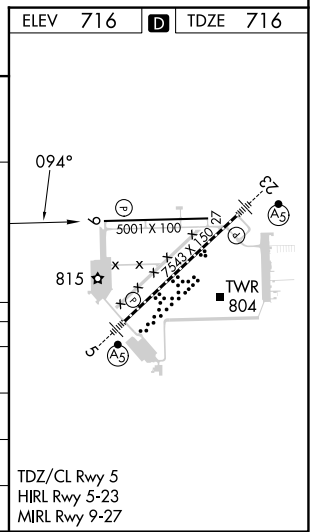
WILLOW RUN (YIP)

RNP APCH - GPS.	MISSED APPROACH: Climb to 1900 then climbing left turn to 4000 direct CIGAL and hold, continue climb-in-hold to 4000.
<p>▼ Rwy 9 helicopter visibility reduction below 3/4 SM NA. For uncompensated Baro-VNAV systems, LNAV/VNAV NA below -21°C or above 54°C.</p>	

ATIS 127.425	DETROIT APP CON 118.95 284.0	WILLOW RUN TOWER 125.275 256.9	GND CON 118.975
------------------------	--	--	---------------------------



CATEGORY	A	B	C	D
LPV DA	966-3/4		250 (300-3/4)	
LNAV/VNAV DA	1201-13/8		485 (500-13/8)	
LNAV MDA	1160-1	444 (500-1)	1160-13/8	444 (500-13/8)
C CIRCLING	1220-1	504 (600-1)	1220-1 1/2 504 (600-1 1/2)	1400-2 1/4 684 (700-2 1/4)



EC-1, 23 JAN 2025 to 20 FEB 2025

EC-1, 23 JAN 2025 to 20 FEB 2025