

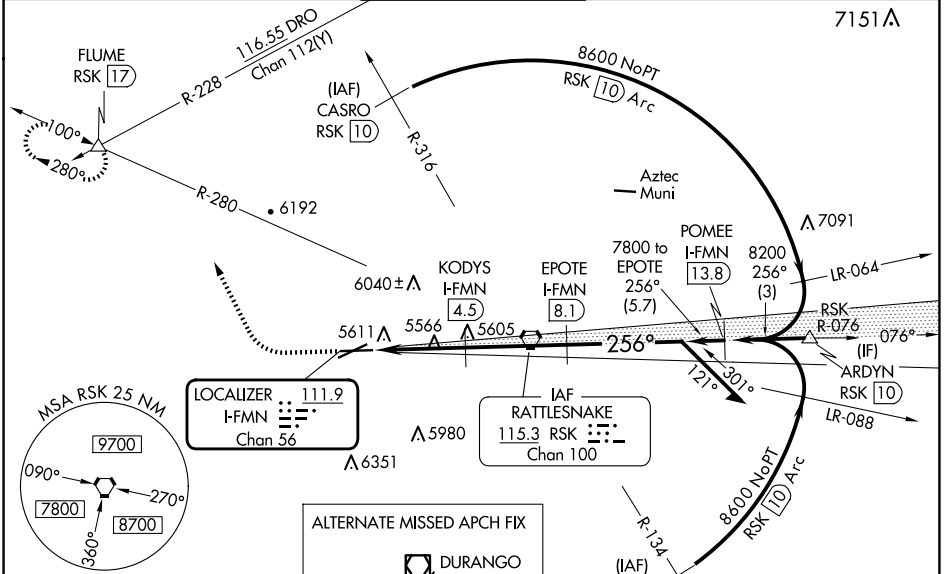
LOC/DME I-FMN	APP CRS	Rwy Idg	<b>6248</b>
<b>111.9</b>	<b>256°</b>	TDZE	<b>5507</b>
Chan 56		Apt Elev	<b>5507</b>

# ILS or LOC RWY 25

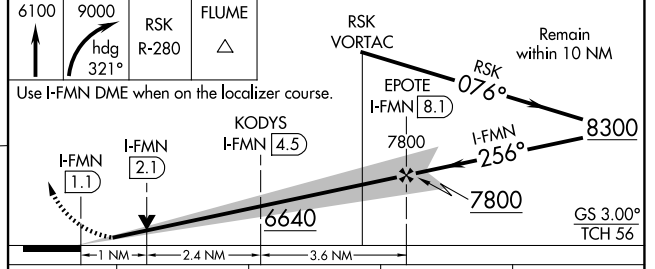
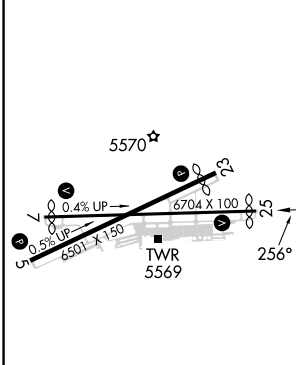
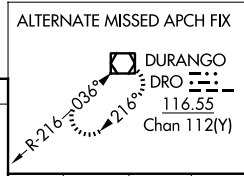
FOUR CORNERS RGNL (FMN)

DME required.	<p><b>V</b> VDP N/A with Durango altimeter setting. Circling N/A for Cat D southeast of Rwy 5 and south of Rwy 25. When local altimeter setting not received, use Durango altimeter setting and increase S-ILS 25 DA to 5950 feet and all visibilities <math>\frac{1}{2}</math> SM; increase all MDAs 260 feet and S-LOC 25 visibility Cat C/D <math>\frac{3}{4}</math> SM, and Circling visibility Cat B <math>\frac{1}{4}</math> SM and Cat C <math>\frac{1}{2}</math> SM.</p>	<p><b>MISSED APPROACH:</b> Climb to 6100 then climbing right turn to 9000 on heading 321° and on RSK VORTAC R-280 to FLUME INT and hold, continue climb-in-hold to 9000.</p>
---------------	--	--

ATIS <b>127.15</b>	DENVER CENTER <b>118.575 348.7</b>	FARMINGTON TOWER* <b>118.9 (CTAF) 257.8</b>	GND CON <b>121.7</b>	UNICOM <b>122.95</b>
-----------------------	---------------------------------------	--	-------------------------	-------------------------



ELEV 5507	<b>D</b>	TDZE 5507
-----------	----------	-----------



REIL Rws 23 and 25	MIRL Rws 5-23 and 7-25	FAF to MAP 7 NM			
Knots	60	90	120	150	180
Min:Sec	7:00	4:40	3:30	2:48	2:20
<b>CIRCLING</b>	6020-1 513 (600-1)	6140-1 633 (700-1)	6380-2½ 873 (900-2½)	6400-3 893 (900-3)	

SW-1, 23 JAN 2025 to 20 FEB 2025

SW-1, 23 JAN 2025 to 20 FEB 2025