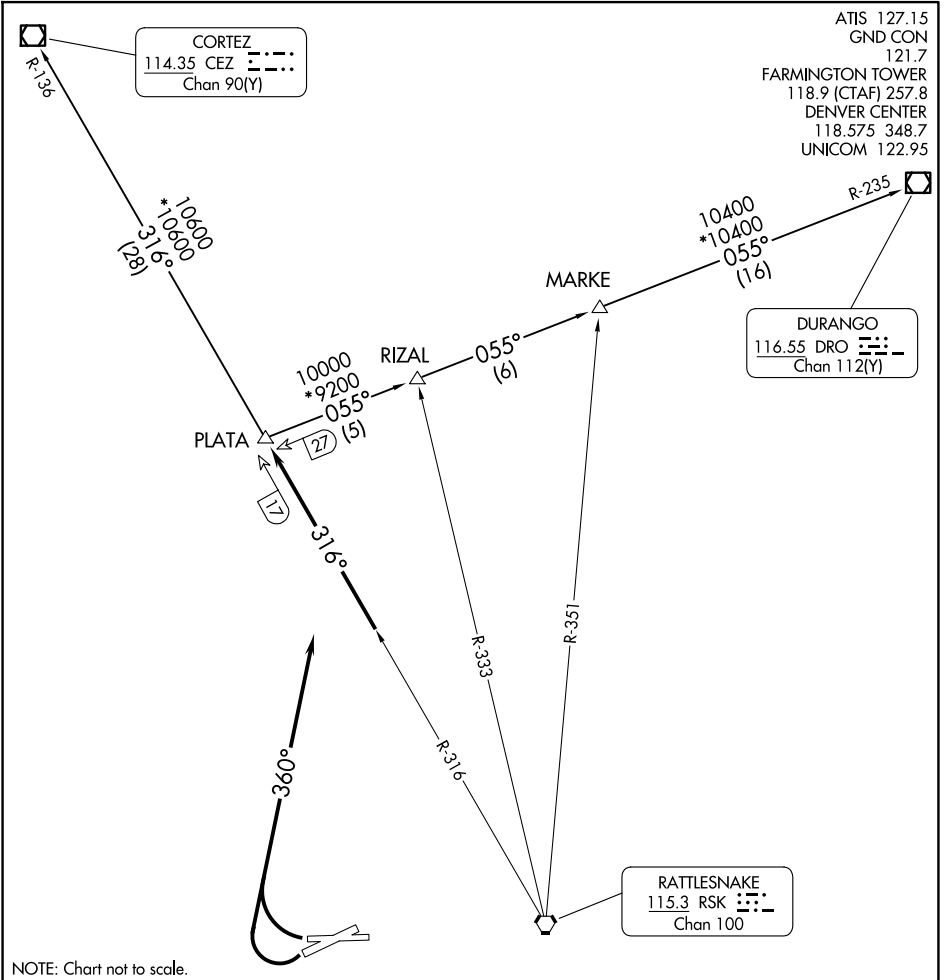


(PLATA1.PLATA) 23334
PLATA ONE DEPARTURE

AL-493 (FAA)

FOUR CORNERS RGNL (F'MN)
 FARMINGTON, NEW MEXICO



SW-1, 23 JAN 2025 to 20 FEB 2025

SW-1, 23 JAN 2025 to 20 FEB 2025

NOTE: Chart not to scale.

DEPARTURE ROUTE DESCRIPTION

Aircraft departure Runways 23 and 25 turn right heading 360° to intercept RSK R-316 to PLATA INT. Thence via (transition) or (assigned route).

CORTEZ TRANSITION (PLATA1.CEZ): From over PLATA INT via RSK R-316 and CEZ R-136 to CEZ VOR/DME.

DURANGO TRANSITION (PLATA1.DRO): From over PLATA INT via DRO R-235 to DRO VOR/DME.

MARKE TRANSITION (PLATA1.MARKE): From over PLATA INT via DRO R-235 to MARKE INT.

RIZAL TRANSITION (PLATA1.RIZAL): From over PLATA INT via DRO R-235 to RIZAL INT.

PLATA ONE DEPARTURE
 (PLATA1.PLATA) 05DEC96

FARMINGTON, NEW MEXICO
 FOUR CORNERS RGNL (F'MN)