

(ALPIN4.KICNE) 23334

ALPIN FOUR DEPARTURE

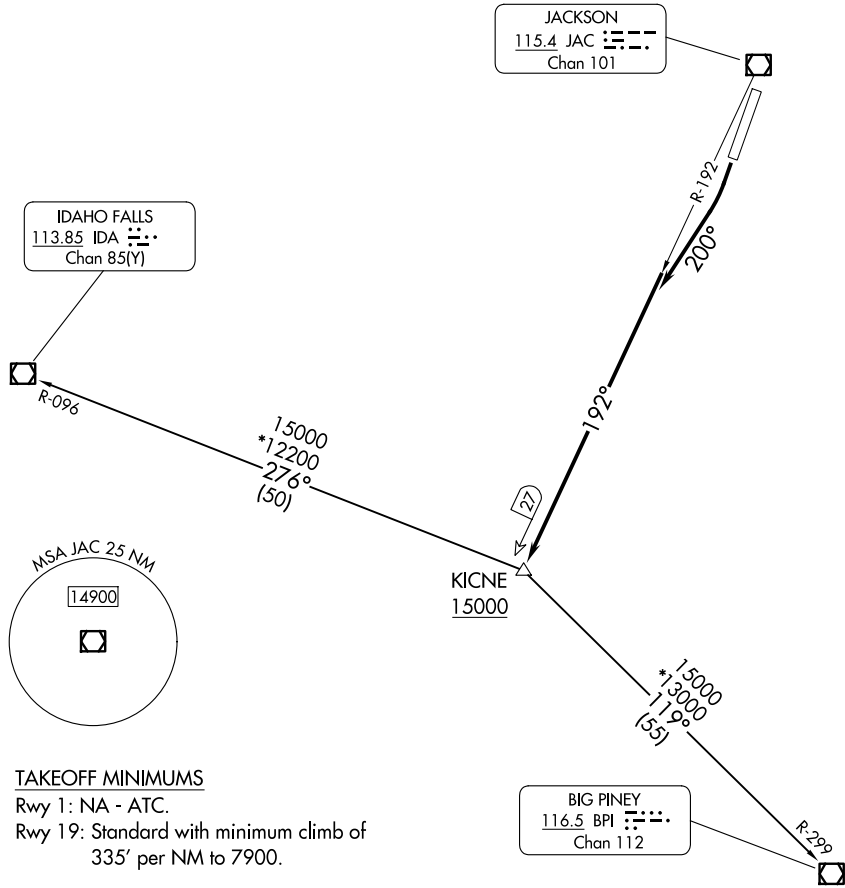
AL-504 (FAA)

JACKSON HOLE (JAC)

JACKSON, WYOMING

SALT LAKE CENTER
133.25 285.6

**TOP ALTITUDE:
AS ASSIGNED BY ATC**



TAKEOFF MINIMUMS

Rwy 1: NA - ATC.

Rwy 19: Standard with minimum climb of 335' per NM to 7900.

NOTE: Chart not to scale.

DEPARTURE ROUTE DESCRIPTION

TAKEOFF RUNWAY 19: Climb on heading 200° to intercept JAC VOR/DME R-192 to KICNE INT/JAC 27 DME, cross KICNE INT at or above 15000. Then proceed on assigned transition/route. Expect further clearance to filed altitude 10 minutes after departure.

BIG PINEY TRANSITION (ALPIN4.BPI): From over KICNE INT on BPI R-299 to BPI VOR/DME.

IDAHO FALLS TRANSITION (ALPIN4.IDA): From over KICNE INT on IDA R-096 to IDA VOR/DME.

ALPIN FOUR DEPARTURE

(ALPIN4.KICNE) 20APR23

JACKSON, WYOMING
JACKSON HOLE (JAC)

NW-1, 23 JAN 2025 to 20 FEB 2025

NW-1, 23 JAN 2025 to 20 FEB 2025