

(DIVYD2.DIVYD) 24025

DIVYD TWO DEPARTURE (RNAV)

AL-504 (FAA)

JACKSON HOLE (JAC)
JACKSON, WYOMING

RNAV 1 - GPS.

RADAR required for non-GPS equipped aircraft.

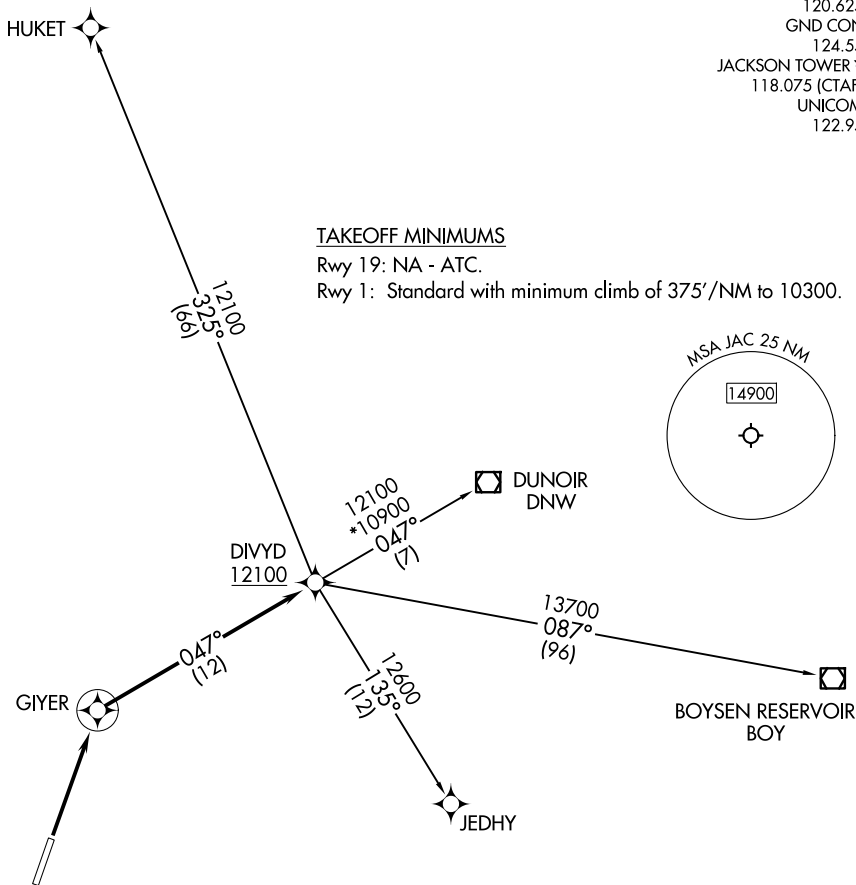
**TOP ALTITUDE:
ASSIGNED BY ATC**

SALT LAKE CENTER
133.25 285.6
D-ATIS
120.625
GND CON
124.55
JACKSON TOWER *
118.075 (CTAF)
UNICOM
122.95

TAKEOFF MINIMUMS

Rwy 19: NA - ATC.

Rwy 1: Standard with minimum climb of 375'/NM to 10300.



NOTE: Chart not to scale.

DEPARTURE ROUTE DESCRIPTION

TAKEOFF RUNWAY 1: Climb direct GIYER, then on track 047° to cross DIVYD at or above 12100, thence. . . .

. . . . (transition). Maintain ATC assigned altitude, expect filed altitude 10 minutes after departure.

BOYSEN RESERVOIR TRANSITION (DIVYD2.BOY)

DUNOIR TRANSITION (DIVYD2.DNW)

HUKET TRANSITION (DIVYD2.HUKET)

JEDHY TRANSITION (DIVYD2.JEDHY)

DIVYD TWO DEPARTURE (RNAV)

(DIVYD2.DIVYD) 25JAN24

JACKSON, WYOMING
JACKSON HOLE (JAC)

NW-1, 23 JAN 2025 to 20 FEB 2025

NW-1, 23 JAN 2025 to 20 FEB 2025