

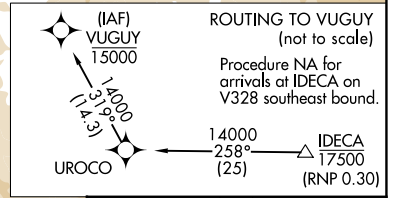
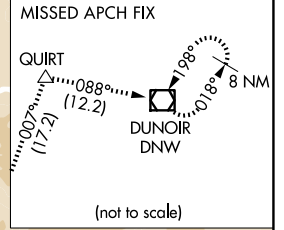
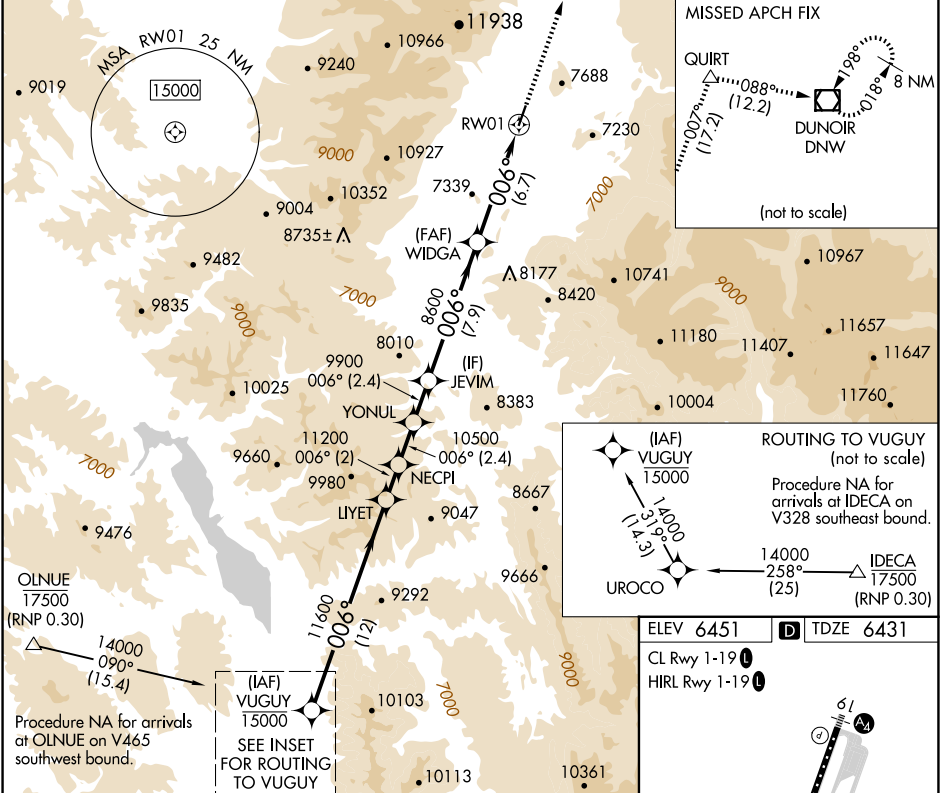
APP CRS	Rwy Idg	<b>6300</b>
<b>006°</b>	TDZE	<b>6431</b>
	Apt Elev	<b>6451</b>

# RNAV (RNP) Y RWY 1

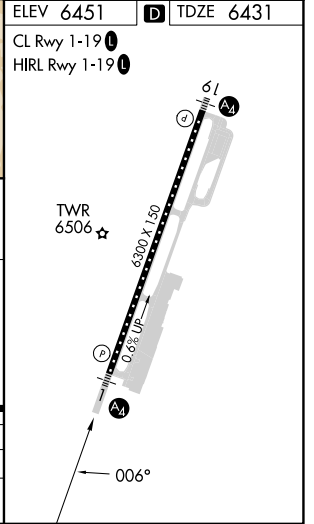
## JACKSON HOLE (JAC)

RNP AR APCH.	MALS	MISSED APPROACH: Climb to 14000 on track 007° to QUIRT and track 088° to DNW VOR/DME and hold, continue climb-in-hold to 14000.
<p>Inop table does not apply.</p> <p>For uncompensated Baro-VNAV systems, procedure NA below -27°C or above 54°C.</p>		

D-ATIS <b>120.625</b>	SALT LAKE CENTER <b>133.25 285.6</b>	JACKSON TOWER* <b>118.075 (CTAF) 1</b>	GND CON <b>124.55</b>	UNICOM <b>122.95</b>
--------------------------	---	---	--------------------------	-------------------------



VUGUY	LIYET	NECPI	YONUL	JEVIM	WIDGA	RWY1
14000	11600	11200	10500	9900	8600	
GP 3.00°						
TCH 50						
	12 NM	2 NM	2.4 NM	2.4 NM	7.9 NM	6.7 NM



CATEGORY	A	B	C	D
RNP 0.30 DA	7373-4		942 (1000-4)	

**AUTHORIZATION REQUIRED**

NW-1, 23 JAN 2025 to 20 FEB 2025

NW-1, 23 JAN 2025 to 20 FEB 2025