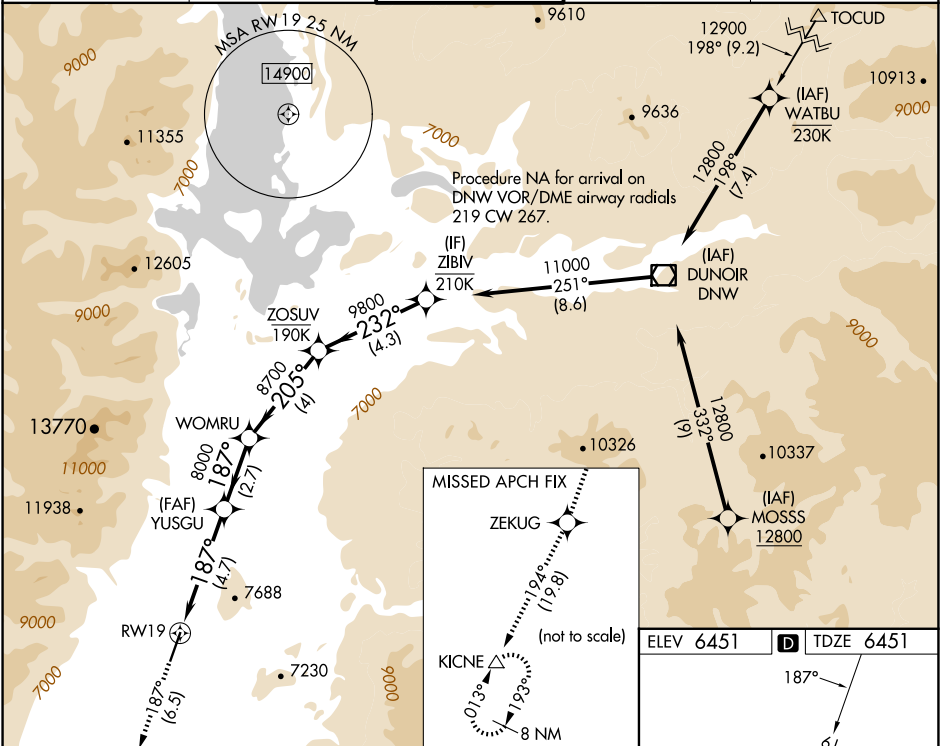


APP CRS	Rwy Idg	6300
187°	TDZE	6451
	Apt Elev	6451

RNAV (RNP) Y RWY 19

JACKSON HOLE (JAC)

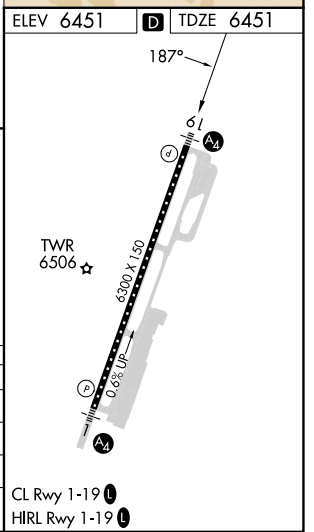
RNP AR APCH-GPS.		MALS 	MISSED APPROACH: Climb to 14000 on track 187° to ZEKUG and on track 194° to KICNE and hold, continue climb-in-hold to 14000. *Missed approach requires minimum climb of 226 feet per NM to 11400. #Missed approach requires minimum climb of 210 feet per NM to 11600.		
For uncompensated Baro-VNAV systems, procedure NA below -27°C or above 54°C. For inop ALS, increase RNP 0.30 all Cats visibility to 1 3/4 SM.					
D-ATIS	SALT LAKE CENTER	JACKSON TOWER*	GND CON	UNICOM	
120.625	133.25 285.6	118.075 (CTAF)	124.55	122.95	



NW-1, 23 JAN 2025 to 20 FEB 2025

NW-1, 23 JAN 2025 to 20 FEB 2025

14000	ZEKUG	KICNE		
↑				
tr 187°	tr 194°			
	WOMRU	ZOSUV	ZIBIV	11000
	YUSGU	8000	9800	
	8000	8700	232°	
	187°	205°		
	8000			
	4.7 NM	2.7 NM	4 NM	4.3 NM
CATEGORY	A	B	C	D
RNP 0.11 DA*	6781/40		330 (400-3/4)	
RNP 0.30 DA#	6935/60		484 (500-1 1/4)	
RNP 0.30 DA	7038-1 3/8		587 (600-1 3/8)	



AUTHORIZATION REQUIRED