

ILS or LOC RWY 31

LOC I-BNN 108.3	APCH CRS 308°	Rwy Idg 8196
		TDZE 4270
		Arprt Elev 4295

AL-512 [USAF]

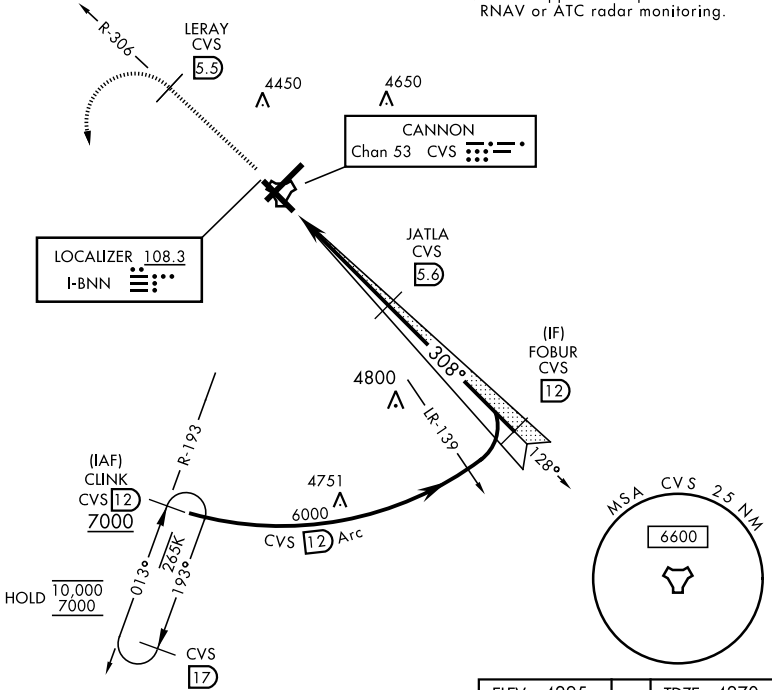
CANNON AFB (KCVS)

ATC RADAR or DME required.	SSALR (A3)	† MISSED APPROACH: Climb to 6000 out CVS TACAN R-306 to 5.5 DME (LERAY) then turn left climbing to 7000 intercept CVS R-193 to 12 DME (CLINK) and hold.
* When ALS inop, increase vis to ¼ mile.		

ATIS 119.1 269.9	CANNON APP CON 118.425 352.1	CANNON TOWER 120.4 270.25	GND CON 121.9 275.8	CLNC DEL 120.2 293.225
----------------------------	--	-------------------------------------	-------------------------------	----------------------------------

** When ALS inop, increase CAT AB vis to 1 mile, CAT CDE vis to 1 ½ miles.

† Missed approach requires use of RNAV or ATC radar monitoring.

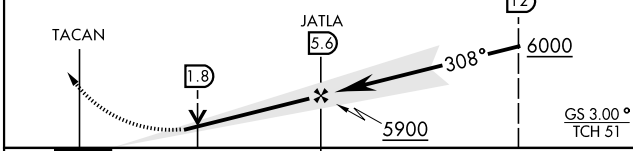


SW-1, 23 JAN 2025 to 20 FEB 2025

SW-1, 23 JAN 2025 to 20 FEB 2025

EMERG SAFE ALT 100 NM 9000

6000 ↑	LERAY CVS R-306 (5.5)	7000 ↙	CLINK CVS R-193 (12)	VGSI TCH (41') and the procedure TCH (51') is greater than 3'.
-----------	---------------------------------	-----------	--------------------------------	--



ELEV 4295	TDZE 4270
HIRL all rwys	
FAF to MAP 4.9 NM	
Knots	60 90 120 150 180
Min:Sec	4:54 3:16 2:27 1:58 1:38

ILS or LOC RWY 31