

CLOVIS, NEW MEXICO

RNAV (GPS) RWY 13

APCH CRS	Rwy Idg	8196
128°	TDZE	4294
	Arprt Elev	4295

AL-512 (USAF)

CANNON AFB (KCVS)

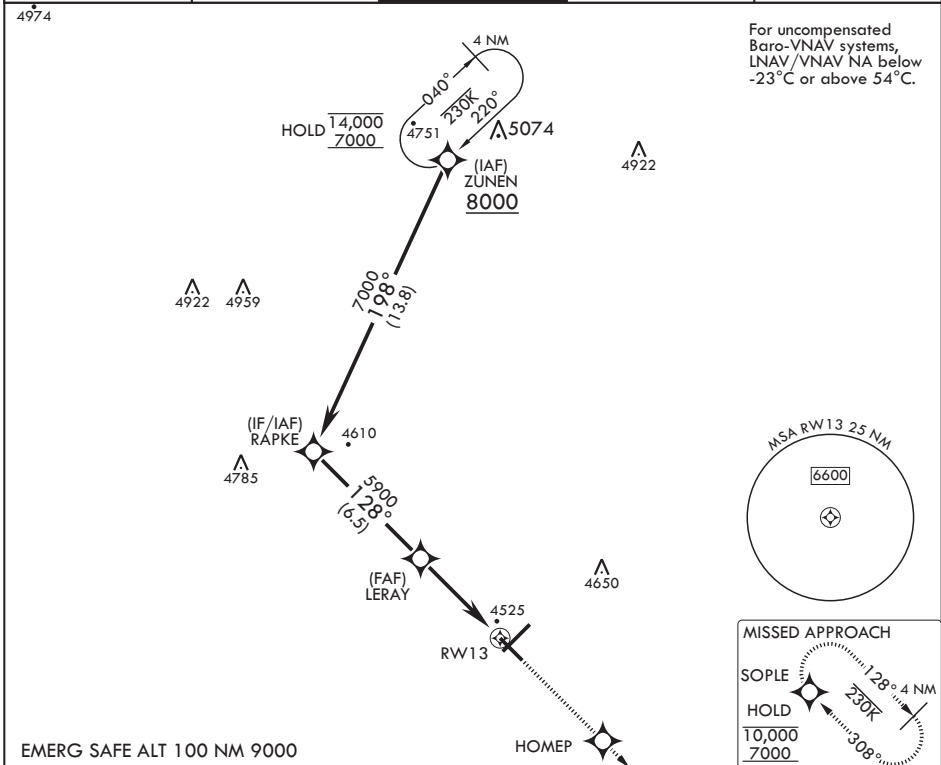
RNP APCH

* When ALS inop increase vis to 1 3/8 miles.
 ** When ALS inop, increase CAT AB vis to 1 mile, CAT CDE vis to 1 1/2 miles.

SSALR

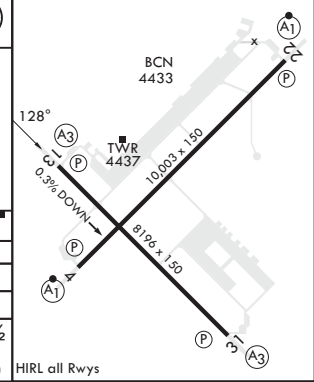
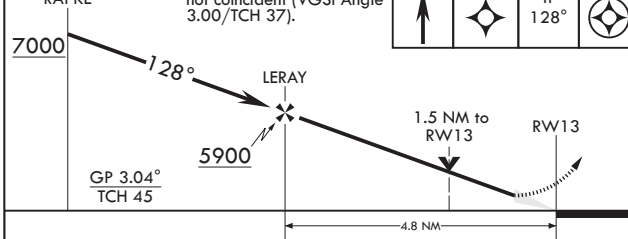
MISSED APPROACH: Climb to 7000 direct HOMEP, then track 128° to SOPLE and hold.

ATIS 119.1 269.9	CANNON APP CON 118.425 352.1	TOWER 120.4 270.25	GND CON 121.9 275.8	CLNC DEL 120.2 293.225
----------------------------	--	------------------------------	-------------------------------	----------------------------------



For uncompensated Baro-VNAV systems, LNAV/VNAV NA below -23°C or above 54°C.

RAPKE	VGSI and RNAV glidepath not coincident (VGSI Angle 3.00/TCH 37).	7000	HOMEP	tr 128°	SOPLE	ELEV 4295	TDZE 4294
-------	--	------	-------	---------	-------	-----------	-----------



CATEGORY	A	B	C	D	E
LNAV/VNAV DA*	4766-1		472	(500-1)	
LNAV MDA**	4820-1/2 526 (600-1/2)		4820-1	526	(600-1)
C CIRCLING	4840-1 545 (600-1)		4860-1 1/2 565 (600-1 1/2)	5000-2 1/4 705 (800-2 1/4)	5020-2 1/2 725 (800-2 1/2)

CLOVIS, NEW MEXICO
Amdt 4 07OCT21

34°23'N - 103°19'W

CANNON AFB (KCVS)

RNAV (GPS) RWY 13

SW-1, 23 JAN 2025 to 20 FEB 2025

SW-1, 23 JAN 2025 to 20 FEB 2025