

CLOVIS, NEW MEXICO

RNAV (GPS) RWY 31

APCH CRS 308°
 Rwy Idg 8196
 TDZE 4270
 Arprt Elev 4295

- (USAF)

CANNON AFB (KCVS)

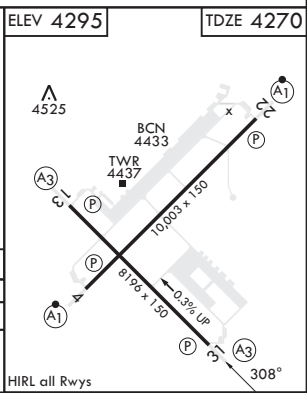
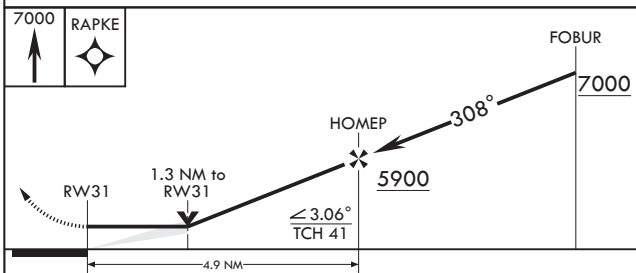
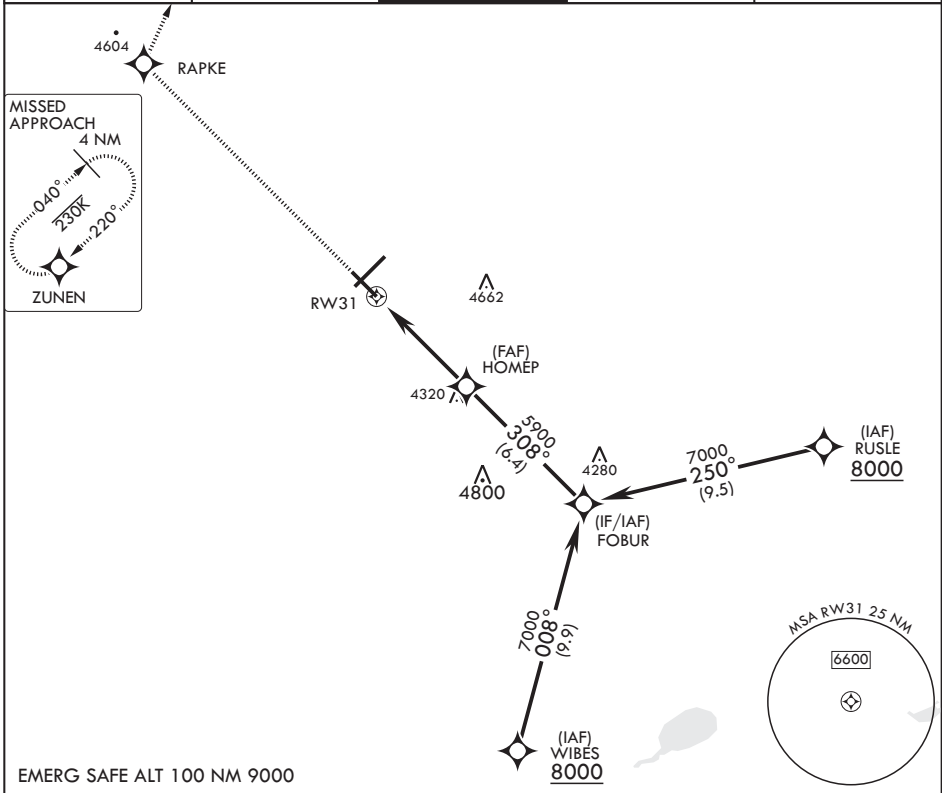
RNP APCH



MISSED APPROACH: Climb to 7000 direct RAPKE, then turn right to ZUNEN and hold.

* When ALS inop, increase CAT AB vis to 1 mile, CAT CDE vis to 1 3/8 miles.

ATIS 119.1 269.9	CANNON APP CON 118.425 352.1	TOWER 120.4 270.25	GND CON 121.9 275.8	CLNC DEL 120.2 293.225
---------------------	---------------------------------	-----------------------	------------------------	---------------------------



CATEGORY	A	B	C	D	E
LNVA MDA*	4720-½	450 (500-½)	4720-⅞	450	(500-⅞)
CIRCLING	4840-1	545 (600-1)	4860-1½	5000-2¼	5020-2½
			565 (600-1½)	705 (800-2¼)	725 (800-2½)

CLOVIS, NEW MEXICO
 Amdt 5 28DEC23

34°23'N - 103°19'W

CANNON AFB (KCVS)

RNAV (GPS) RWY 31

SW-1, 23 JAN 2025 to 20 FEB 2025

SW-1, 23 JAN 2025 to 20 FEB 2025