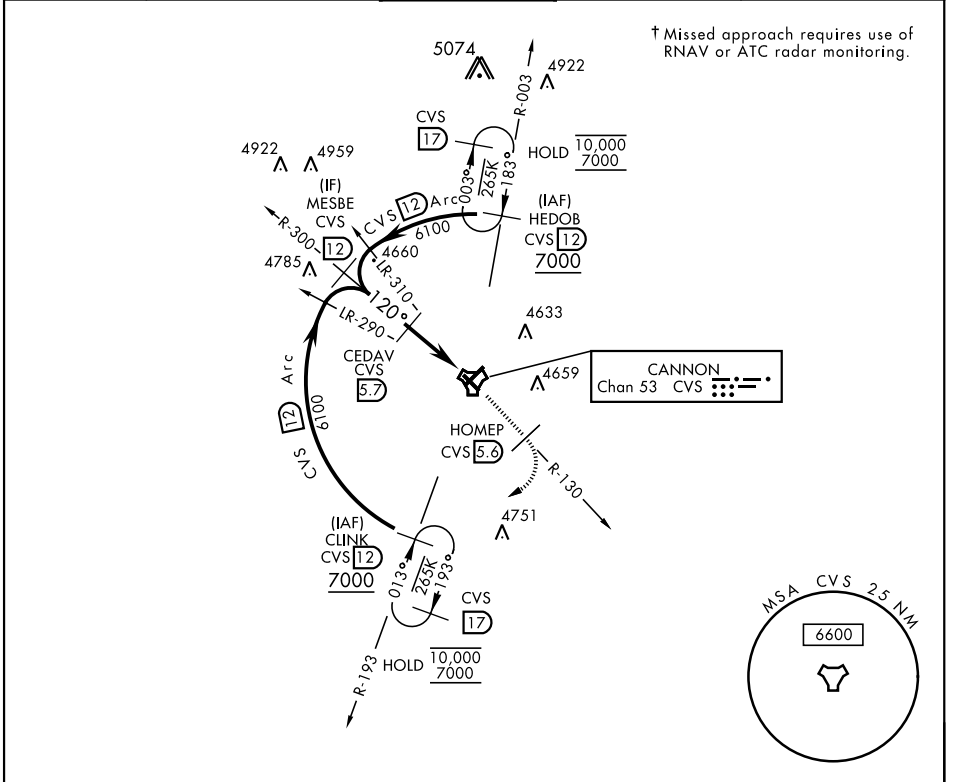


CLOVIS, NEW MEXICO

# TACAN RWY 13

TACAN CVS Chan <b>53</b>	APCH CRS <b>120°</b>	Rwy ldg <b>8196</b> TDZE <b>4294</b> Arprt Elev <b>4295</b>	AL-512 [USAF]	CANNON AFB (KCVS)
<p>▼ * When ALS inop, increase CAT AB vis to 1 mile, CAT CDE vis to 1½ miles.</p>			<p>SSALR (A3)</p>	<p>† MISSED APPROACH: Climb to 6000 out CVS TACAN R-130 to 5.6 DME (HOMEP) then turn right climbing to 7000 intercept CVS R-193 to 12 DME (CLINK) and hold.</p>

ATIS <b>119.1 269.9</b>	CANNON APP CON <b>118.425 352.1</b>	CANNON TOWER <b>120.4 270.25</b>	GND CON <b>121.9 275.8</b>	CLNC DEL <b>120.2 293.225</b>
----------------------------	--	-------------------------------------	-------------------------------	----------------------------------



SW-1, 23 JAN 2025 to 20 FEB 2025

SW-1, 23 JAN 2025 to 20 FEB 2025

EMERG SAFE ALT 100 NM 9000

	ELEV 4295	TDZE 4294																			
<table border="1" style="width:100%; border-collapse: collapse;"> <thead> <tr> <th>CATEGORY</th> <th>A</th> <th>B</th> <th>C</th> <th>D</th> <th>E</th> </tr> </thead> <tbody> <tr> <td>S-13*</td> <td>4800-¾</td> <td>506 (600-¾)</td> <td>4800-1</td> <td>506</td> <td>(600-1)</td> </tr> <tr> <td>CIRCLING</td> <td>4840-1</td> <td>545 (600-1)</td> <td>4860-1½ 565 (600-1½)</td> <td>5000-2¼ 705 (800-2¼)</td> <td>5020-2½ 725 (800-2½)</td> </tr> </tbody> </table>	CATEGORY	A	B	C	D	E	S-13*	4800-¾	506 (600-¾)	4800-1	506	(600-1)	CIRCLING	4840-1	545 (600-1)	4860-1½ 565 (600-1½)	5000-2¼ 705 (800-2¼)	5020-2½ 725 (800-2½)	<p>HIRL all rwys</p>		
CATEGORY	A	B	C	D	E																
S-13*	4800-¾	506 (600-¾)	4800-1	506	(600-1)																
CIRCLING	4840-1	545 (600-1)	4860-1½ 565 (600-1½)	5000-2¼ 705 (800-2¼)	5020-2½ 725 (800-2½)																

CLOVIS, NEW MEXICO 34° 23'N-103° 19'W CANNON AFB (KCVS)

Amdt 2 09NOV17

# TACAN RWY 13