

CLOVIS, NEW MEXICO


# TACAN RWY 31

TACAN CVS Chan 53	APCH CRS 316°	Rwy ldg TDZE 4270 Arprt Elev 4295
----------------------	------------------	--

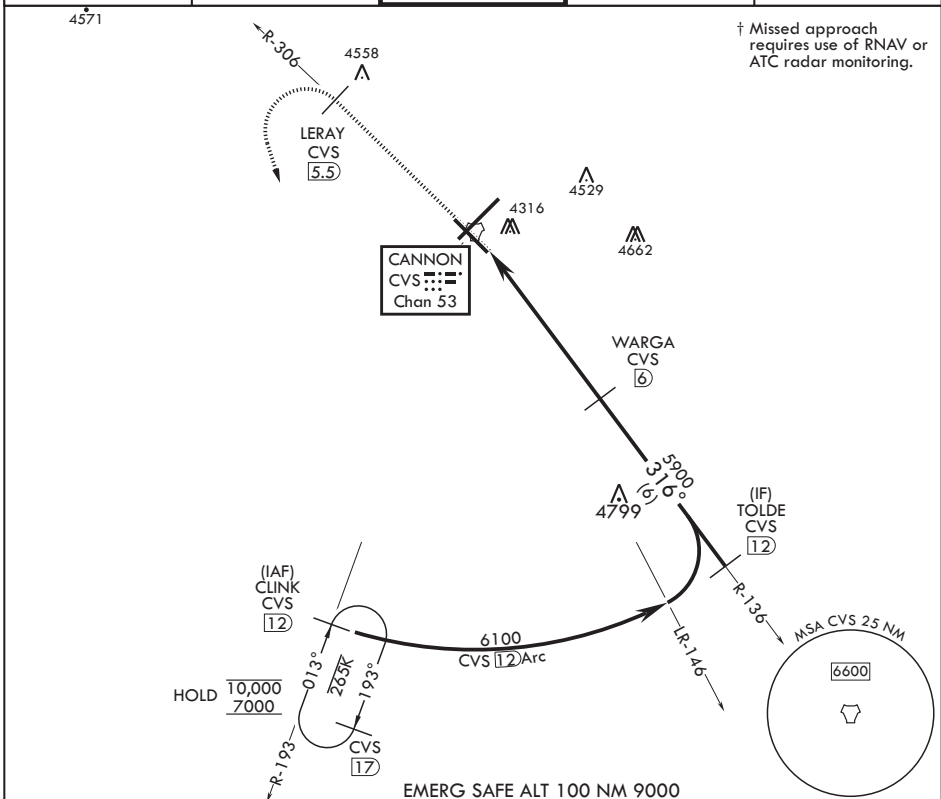
AL-512 (USAF)

CANNON AFB (KCVS)

⚠ \* When ALS inop, increase CAT AB vis to 1 mile, CAT CDE increase vis to 1 3/8 miles.

SSALR  † MISSED APPROACH: Climb to 6000 out CVS TACAN R-306 to 5.5 DME (LERAY) then turn left climbing to 7000 intercept CVS TACAN R-193 to 12 DME (CLINK) and hold.

ATIS 119.1 269.9	CANNON APP CON 118.425 352.1	TOWER 120.4 270.25	GND CON 121.9 275.8	CLNC DEL 120.2 293.225
---------------------	---------------------------------	-----------------------	------------------------	---------------------------



SW-1, 23 JAN 2025 to 20 FEB 2025

SW-1, 23 JAN 2025 to 20 FEB 2025

EMERG SAFE ALT 100 NM 9000

6000 CVS R-306	LERAY CV5 5.5	7000 CVS R-193	CLINK CV5 12	TOLDE R-136 12	CLINK R-193 12	ELEV 4295	TDZE 4270
----------------	---------------	----------------	--------------	----------------	----------------	-----------	-----------

CATEGORY	A	B	C	D	E
S-31*	4700-1/2	430 (500-1/2)	4700-3/4	430 (500-3/4)	
CIRCLING	4840-1	545 (600-1)	4860-1 1/2	5000-2 1/4	5020-2 1/2
			565 (600-1 1/2)	705 (800-2 1/4)	725 (800-2 1/2)

HIRL all Rwy's

CLOVIS, NEW MEXICO

34°23'N - 103°19'W

CANNON AFB (KCVS)

Amdt 3 10OCT19

# TACAN RWY 31