

APP CRS	Rwy Idg	<b>9400</b>
<b>242°</b>	TDZE	<b>7680</b>
	Apt Elev	<b>7680</b>

# RNAV (RNP) RWY 24

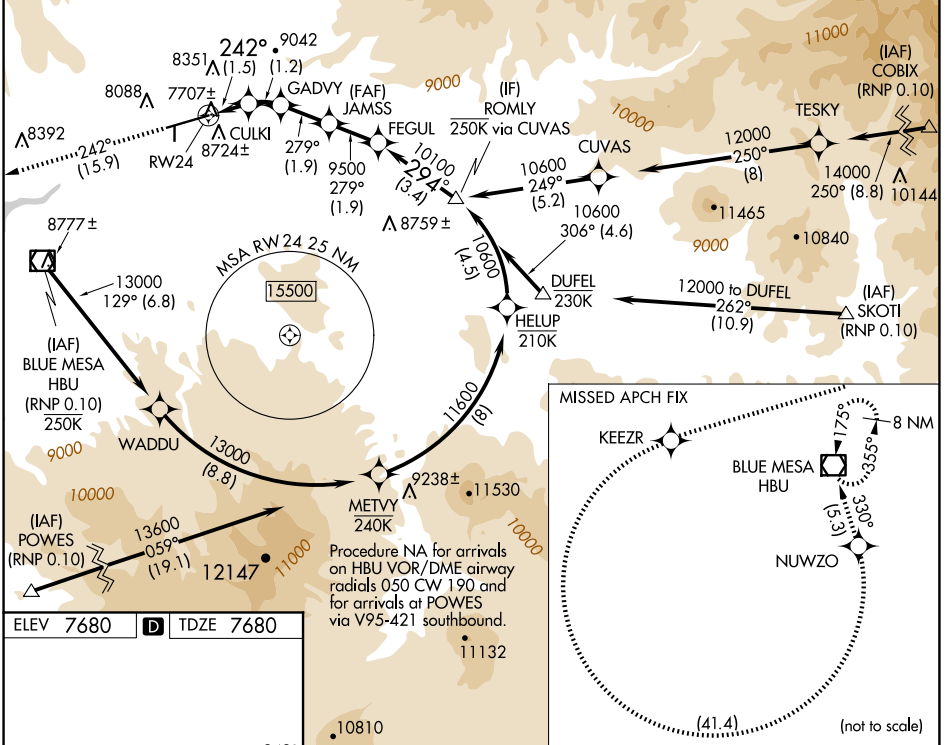
GUNNISON-CRESTED BUTTE RGNL (GUC)

RNP AR APCH - GPS, RF, min RNP 0.10. Authorization required.

▼ When local altimeter setting not received, procedure NA.  
 ❄️ -26°C Procedure NA for aircraft with wingspan greater than 136 feet. For uncompensated Baro-VNAV systems, procedure NA below -29°C or above 24°C.

MISSED APPROACH: Climb to 14000 on track 242° to KEEZR, and left turn to NUWZO, and on track 330° to HBU VOR/DME and hold.  
 Missed approach requires minimum climb of 425 feet per NM to 9000.

AWOS-3PT <b>135.075</b>	DENVER CENTER <b>124.5 350.25</b>	UNICOM <b>122.7 (CTAF) 0</b>
----------------------------	--------------------------------------	---------------------------------



ELEV 7680 **D** TDZE 7680

HIRL Rwy 6-24  
REIL Rwy 24

14000	KEEZR	NUWZO	VGSI and RNAV glidepath not coincident (VGSI Angle 3.60/TCH 71).	
tr 242°			JAMSS	ROMLY
	CULKI	GADVY	FEGUL	
	8320	8776	9500	10600
			279°	294°
			9500	10100
				Procedure Turn NA GP 3.60° TCH 65
			1.5 NM	1.2 NM
			1.9 NM	1.9 NM
			3.4 NM	
CATEGORY	A		B	
RNP 0.10 DA	8029-1		349 (400-1)	
			D	
			NA	
<b>AUTHORIZATION REQUIRED</b>				

SW-1, 23 JAN 2025 to 20 FEB 2025

SW-1, 23 JAN 2025 to 20 FEB 2025