

LOC I-VNY <b>111.3</b>	APP CRS <b>164°</b>	Rwy ldg TDZE Apt Elev	<b>6569</b> <b>793</b> <b>802</b>
---------------------------	------------------------	-----------------------------	---

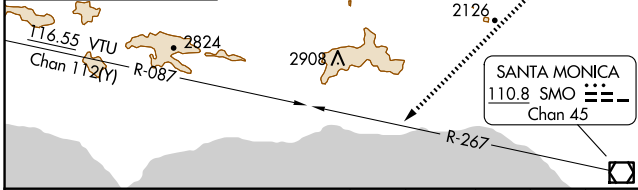
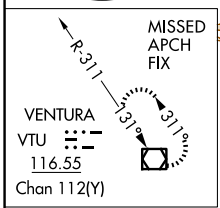
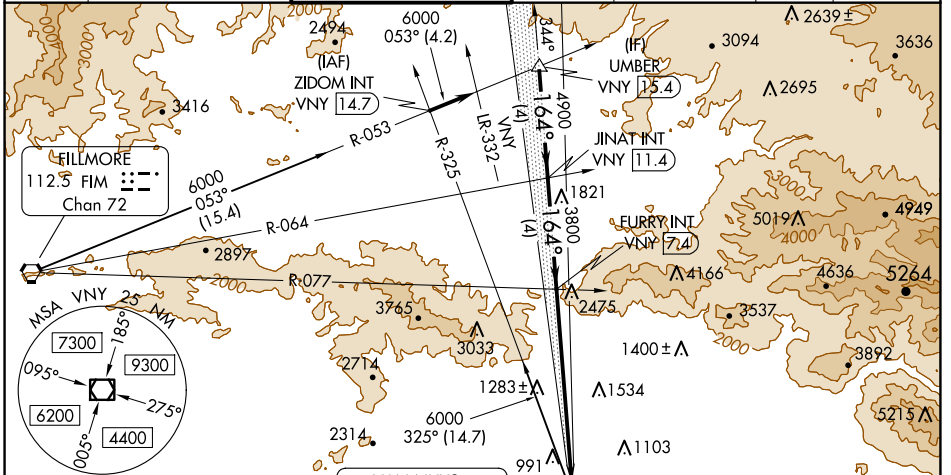
# ILS Y RWY 16R

VAN NUYS (VNY)

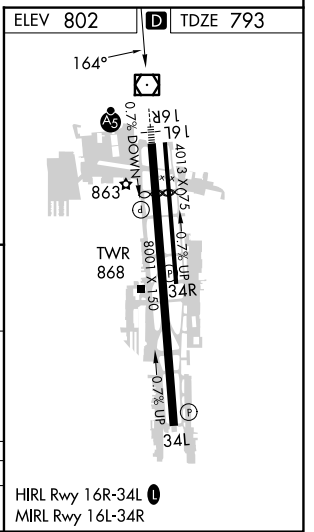
**▼** For inop MALSR, increase S-ILS all Cats visibility to 2 SM. When **▲** local altimeter setting not received, use Burbank altimeter setting and increase DA to 1480 feet and all Cats visibility to 1½ SM.

**MALSR** MISSED APPROACH: Climb to 1700 then climbing right turn to 4600 on heading 210° and on SMO VOR/DME R-267 and on VTU VOR/DME R-087 to VTU VOR/DME and hold.

ATIS <b>127.55</b>	SOCAL APP CON <b>120.4 360.6 (NORTH)</b> <b>134.2 338.2 (WEST)</b>	VAN NUYS TOWER * <b>119.3 (CTAF) 0 239.0</b>	GND CON <b>121.7</b>	CLNC DEL <b>126.6 239.0</b>	CPDLC	UNICOM <b>122.95</b>
-----------------------	--	---	-------------------------	--------------------------------	-------	-------------------------



UMBER VNY 15.4	JINAT INT VNY 11.4	FURRY INT VNY 7.4	1700	4600	SMO R-267	VTU R-087	VTU
6000		3800		hdg 210°		TWR 868	
GS 3.50° TCH 49		4 NM		4 NM		8 NM	



CATEGORY	A	B	C	D
S-ILS 16R		1461-1½	668 (700-1½)	

SW-3, 23 JAN 2025 to 20 FEB 2025

SW-3, 23 JAN 2025 to 20 FEB 2025