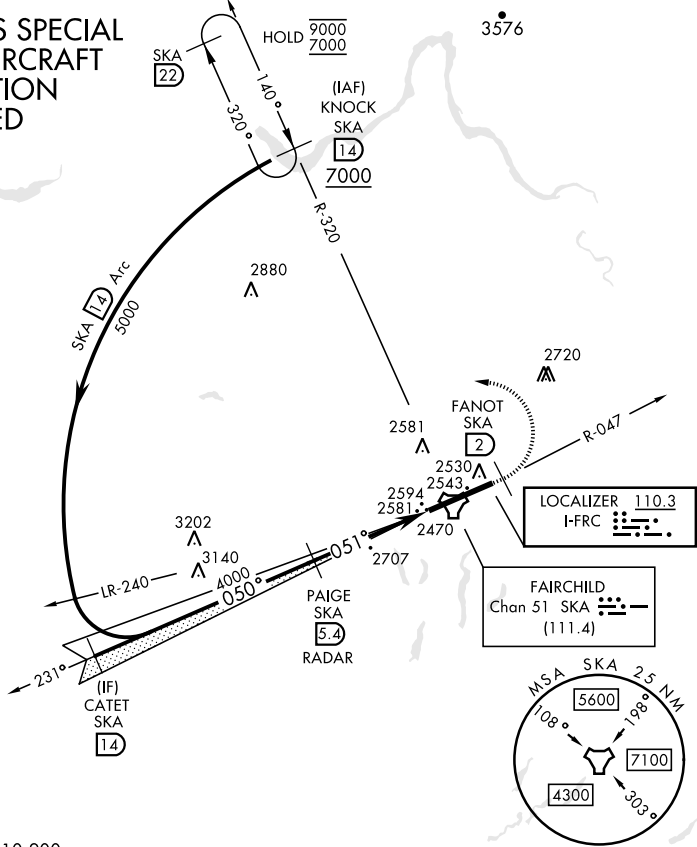


SPOKANE, WASHINGTON

# ILS RWY 5 (CAT II)

LOC I-FRC <b>110.3</b>	APCH CRS <b>051°</b>	Rwy Idg <b>13,899</b> TDZE <b>2462</b> Arpt Elev <b>2462</b>	[USAF]	FAIRCHILD AFB (KSKA)
RADAR required for KNOCK holding.			ALSF-2	MISSED APPROACH: Climb to 7000 via SKA TACAN R-047. At FANOT turn left hdg 275° to intcp SKA R-320 to KNOCK and hold, continue climb in hold to 7000.
ATIS <b>257.625</b>	SPOKANE APP CON <b>123.75 282.25</b> (208° - 028°) <b>133.35 263.0</b> (029° - 207°)	TOWER <b>120.35 233.7</b>	GND CON <b>123.6 275.8</b>	

## CATEGORY II ILS SPECIAL AIRCREW & AIRCRAFT CERTIFICATION REQUIRED



EMERG SAFE ALT 100 NM 10,900					ELEV 2462	TDZE 2462
KNOCK SKA (14)	CATET SKA (14)	PAIGE SKA (5.4) RADAR	7000 SKA R-047	FANOT SKA (2)	hdg 275°	SKA R-320
7000 Intcp Lczz 5000 Arc (14) GS 3.00° TCH 58 4000 0.50° 0.51° 4.6 NM 11921						
CATEGORY	A	B	C	D	E	HIRL Rwy 5-23
S-ILS 5	RA 98/12		100	DA 2562		TDZL/CL Rwy 5

SPOKANE, WASHINGTON 47°37'N-117°39'W FAIRCHILD AFB (KSKA)

Amtd 2 03NOV22

# ILS RWY 5 (CAT II)

NW-1, 23 JAN 2025 to 20 FEB 2025

NW-1, 23 JAN 2025 to 20 FEB 2025