

SPOKANE, WASHINGTON

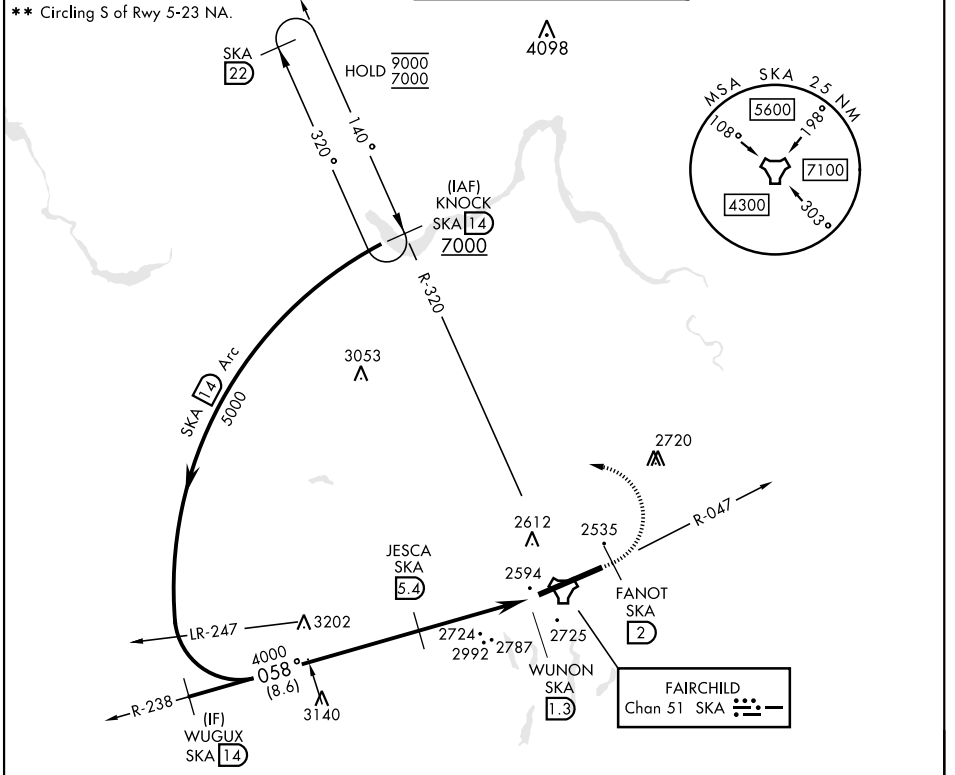
# TACAN RWY 5

TACAN SKA Chan <b>51</b>	APCH CRS <b>058°</b>	Rwy Idg <b>13,899</b> TDZE <b>2462</b> Arprt Elev <b>2462</b>
--------------------------	----------------------	---

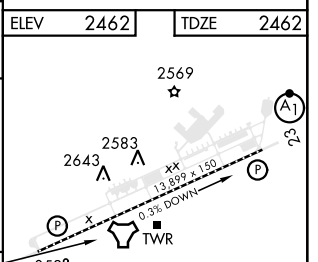
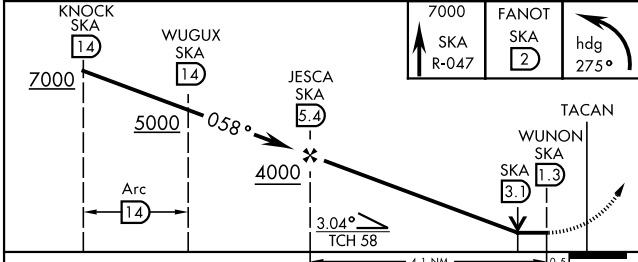
[USAF]

FAIRCHILD AFB (KSKA)

RADAR required for KNOCK holding.		ALSIF-2	MISSED APPROACH: Climb to 7000 via SKA TACAN R-047. At FANOT turn left hdg 275° to intcp SKA R-320 to KNOCK and hold, cont climb in hold to 7000.	
<p>▼ * When ALS inop, increase CAT A RVR to 55, vis to 1 mile, CAT B vis to 1½ miles, CAT CDE vis to 2½ miles.</p>				
ATIS <b>257.625</b>	SPOKANE APP CON <b>123.75 282.25</b> SPOKANE CON <b>133.35 263.0</b>	(208° - 028°) (029° - 207°)	TOWER <b>120.35 233.7</b>	GND CON <b>123.6 275.8</b>



EMERG SAFE ALT 100 NM 10,900



CATEGORY	A	B	C	D	E
S-5 *	3260/24 798 (800-½)	3260/40 798 (800-¾)	3260-1¼	798	(800-1¼)
CIRCLING **	3260-1 798 (800-1)	3260-1¼ 798 (800-1¼)	3260-2½ 798 (800-2½)		3600-3 1138(1200-3)

SPOKANE, WASHINGTON 47°37'N-117°39'W FAIRCHILD AFB (KSKA)

Amtd 5 03NOV22

# TACAN RWY 5

NW-1, 23 JAN 2025 to 20 FEB 2025

NW-1, 23 JAN 2025 to 20 FEB 2025