

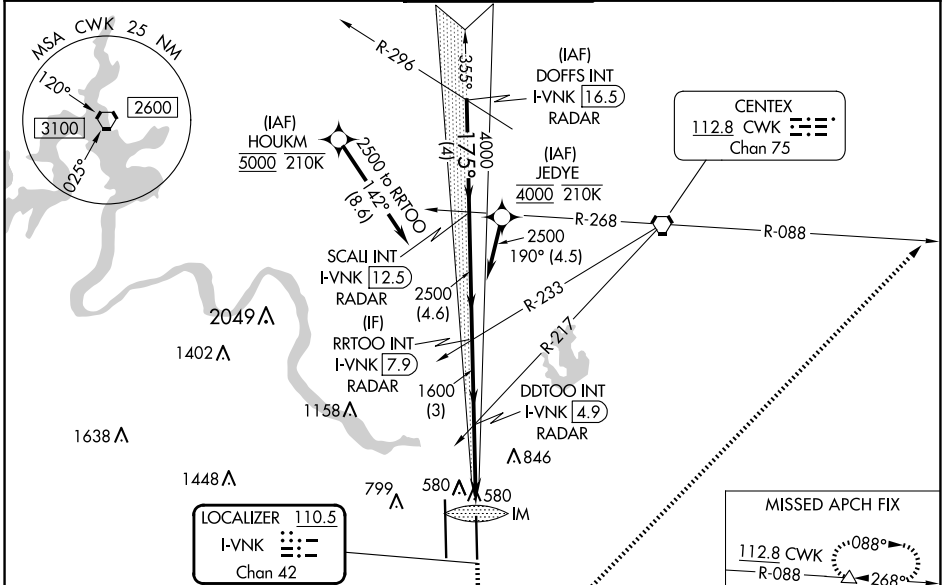
LOC/DME I-VNKG 110.5 Chan 42	APP CRS 175°	Rwy Idg TDZE 492 Apt Elev 542	9000
---	------------------------	---	-------------

ILS RWY 18L (SA CAT I)

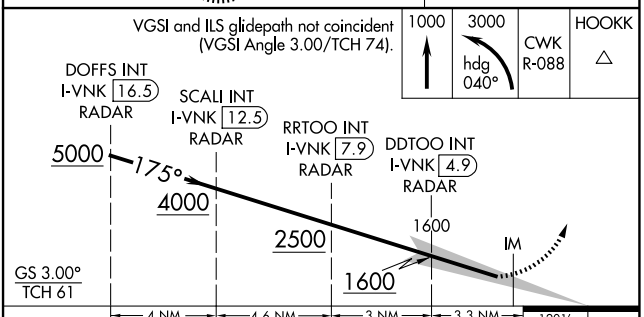
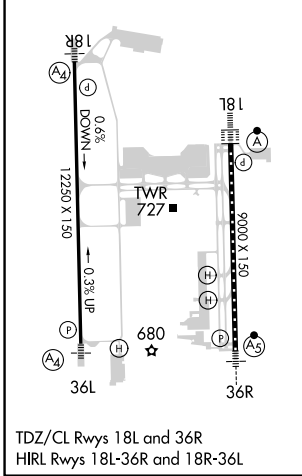
AUSTIN-BERGSTROM INTL (AUS)

RNP APCH-GPS. From HOUKM or JEDYE.	ALSF-2 A	MISSED APPROACH: Climb to 1000 then climbing left turn to 3000 on heading 040° and CWK VORTAC R-088 to HOOKK/CWK 17 DME and hold.
RADAR required for procedure entry from DOFFS. DME required.		
Simultaneous approach authorized. Requires specific OPSPEC, MSPEC or LOA approval.		

D-ATIS 124.4	AUSTIN APP CON 127.225 317.65 (EAST) 120.875 270.25 (SOUTH) 119.0 370.85 (WEST)	AUSTIN TOWER 121.0 281.5	GND CON 121.9 348.6	CLNC DEL 125.5 263.0	CPDLC
------------------------	---	------------------------------------	-------------------------------	--------------------------------	-------



ELEV 542	D TDZE 492
----------	-------------------



CATEGORY	A	B	C	D
S-ILS 18L	RA 155/14 150 DA 642			

SA CATEGORY I ILS- SPECIAL AIRCREW & AIRCRAFT CERTIFICATION REQUIRED

SC-3, 23 JAN 2025 to 20 FEB 2025

SC-3, 23 JAN 2025 to 20 FEB 2025