

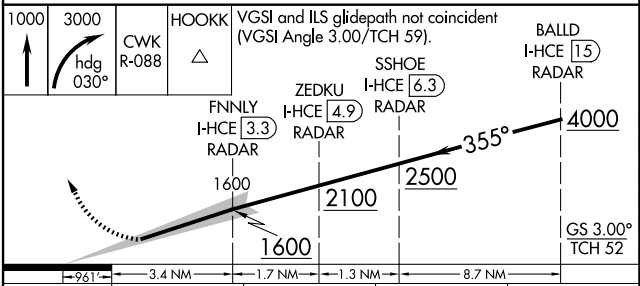
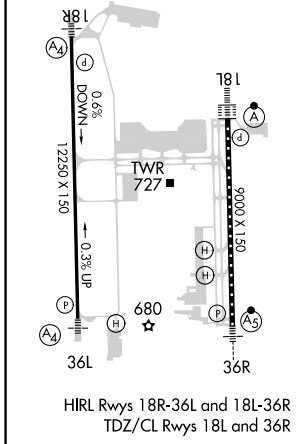
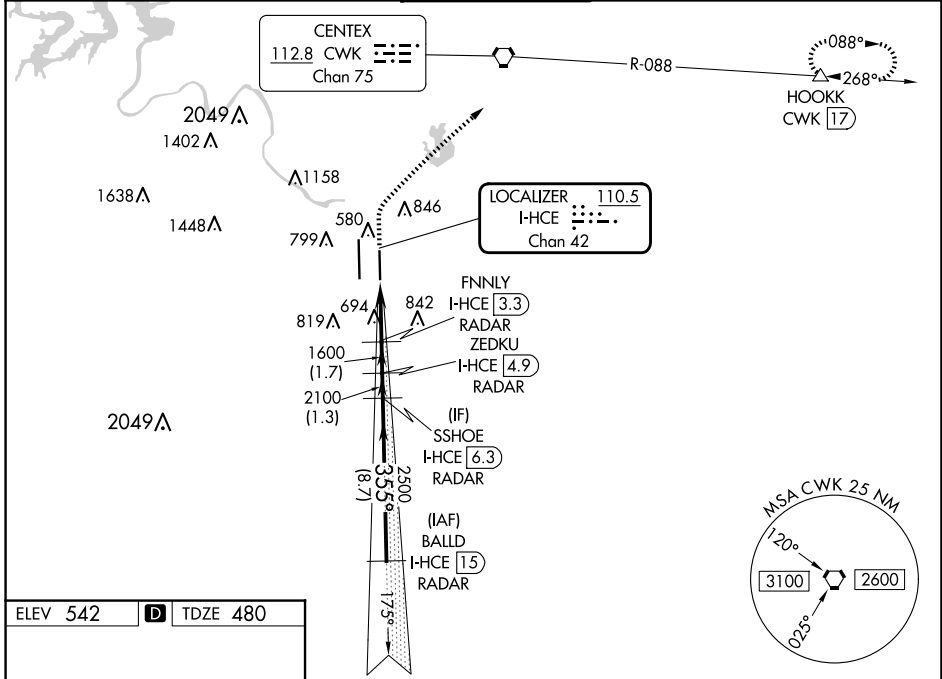
LOC/DME I-HCE 110.5 Chan 42	APP CRS 355°	Rwy Idg 9000 TDZE 480 Apt Elev 542
---	------------------------	---

ILS RWY 36R (SA CAT I & II)

AUSTIN-BERGSTROM INTL (AUS)

DME required. RADAR required for procedure entry.		MALSR 	MISSED APPROACH: Climb to 1000 then climbing right turn to 3000 on heading 030° and CWK VORTAC R-088 to HOOKK/CWK 17 DME and hold.		
Simultaneous approach authorized. SA CAT I: Requires specific OPSPEC, MSPEC or LOA approval. SA CAT II: Requires specific OPSPEC, MSPEC or LOA approval.					

D-ATIS 124.4	AUSTIN APP CON 127.225 317.65 (EAST) 120.875 270.25 (SOUTH) 119.0 370.85 (WEST)	AUSTIN TOWER 121.0 281.5	GND CON 121.9 348.6	CLNC DEL 125.5 263.0	CPDLC
------------------------	---	------------------------------------	-------------------------------	--------------------------------	-------



CATEGORY	A	B	C	D
S-ILS 36R	SA CAT I RA 185/14 150 DA 630			
S-ILS 36R	SA CAT II RA 110/12 100 DA 580			

SA CATEGORY I & II ILS - SPECIAL AIRCREW & AIRCRAFT CERTIFICATION REQUIRED

SC-3, 23 JAN 2025 to 20 FEB 2025

SC-3, 23 JAN 2025 to 20 FEB 2025