

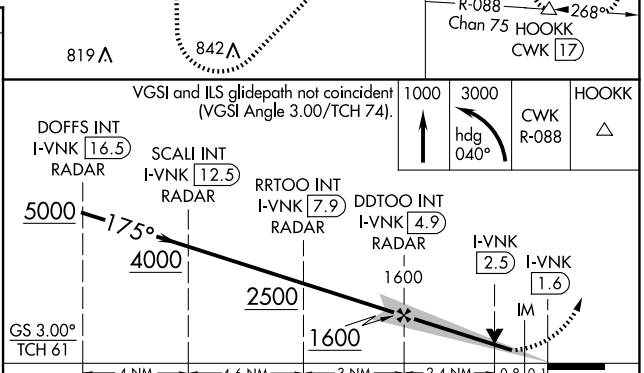
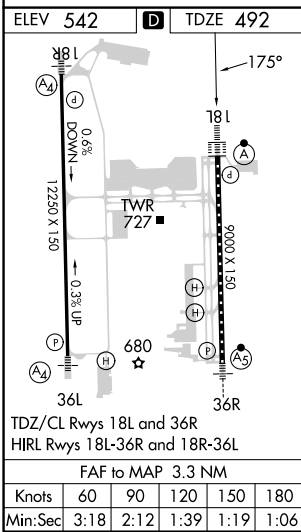
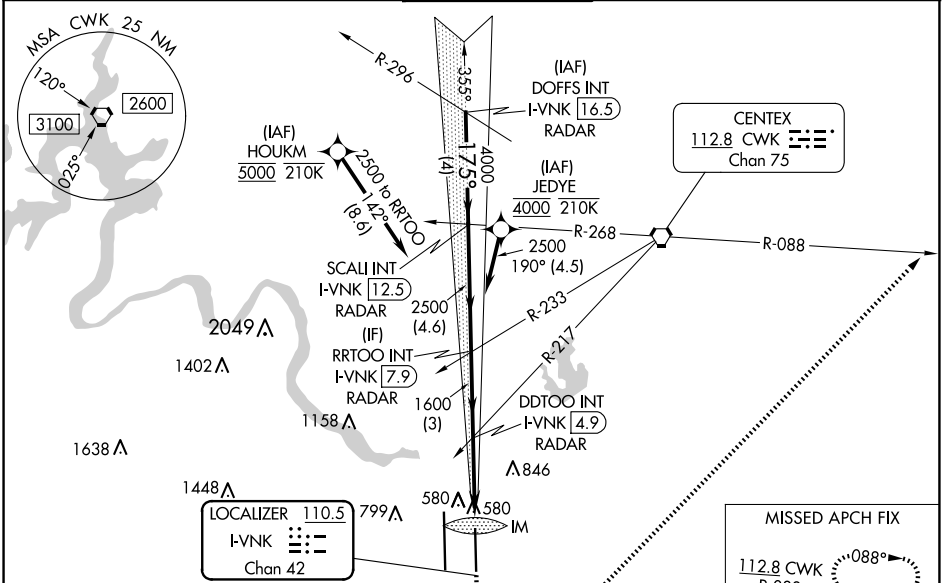
LOC/DME I-VNKG <b>110.5</b> Chan 42	APP CRS <b>175°</b>	Rwy Idg <b>9000</b> TDZE <b>492</b> Apt Elev <b>542</b>
---	------------------------	---

# ILS or LOC RWY 18L

AUSTIN-BERGSTROM INTL (AUS)

RNP APCH-GPS. From HOUKM or JEDYE.	ALSIF-2 	MISSED APPROACH: Climb to 1000 then climbing left turn to 3000 on heading 040° and CWK VORTAC R-088 to HOOKK/CWK 17 DME and hold.
RADAR required for procedure entry from DOFFS. DME required.		
<p>Simultaneous approach authorized. For inop ALS, increase S-ILS-18L Cat E visibility to RVR 4000, and S-LOC-18L Cats C, D, and E visibility to RVR 5500.</p>		

D-ATIS <b>124.4</b>	AUSTIN APP CON <b>127.225 317.65</b> (EAST) <b>120.875 270.25</b> (SOUTH) <b>119.0 370.85</b> (WEST)	AUSTIN TOWER <b>121.0 281.5</b>	GND CON <b>121.9 348.6</b>	CLNC DEL <b>125.5 263.0</b>	CPDLC
------------------------	---	------------------------------------	-------------------------------	--------------------------------	-------



VGSI and ILS glidepath not coincident (VGSI Angle 3.00/TCH 74).	1000	3000	HOOKK		
	hdg 040°	CWK R-088	△		
DOFFS INT I-VNKG 16.5 RADAR	SCALI INT I-VNKG 12.5 RADAR	RRTOO INT I-VNKG 7.9 RADAR	DDTOO INT I-VNKG 4.9 RADAR		
5000	4000	2500	1600		
GS 3.00° TCH 61	4 NM	4.6 NM	3 NM		
			2.4 NM		
			0.8		
			0.1		
			IM		
			I-VNKG 2.5		
			I-VNKG 1.6		
CATEGORY	A	B	C	D	E
S-ILS 18L	692/18 200 (200-½)				
S-LOC 18L	840/24	348 (300-½)	840/30	348 (300-¾)	
CIRCLING	1040-1 498 (500-1)	1120-1 578 (600-1)	1200-1¾ 658 (700-1¾)	1200-2 658 (700-2)	NA

SC-3, 23 JAN 2025 to 20 FEB 2025

SC-3, 23 JAN 2025 to 20 FEB 2025