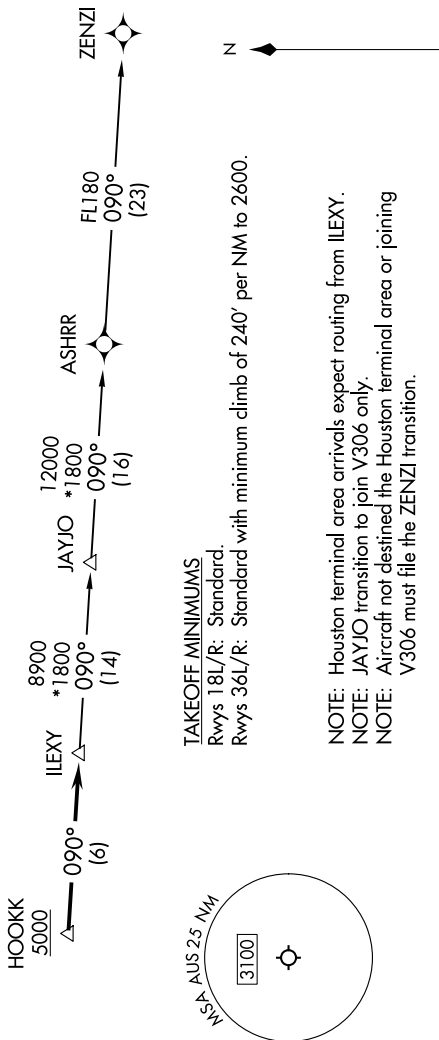


SC-3, 23 JAN 2025 to 20 FEB 2025

**TOP ALTITUDE:
ASSIGNED BY ATC**

RNAV 1 - DME/DME/IRU or GPS.
RADAR required.

- D-AITS 124.4
- CINC DEL 125.5 263.0
- CPDIC
- GND CON 121.9 348.6
- AUSTIN TOWER 121.0 281.5
- AUSTIN DEP CON 127.225 317.65



DEPARTURE ROUTE DESCRIPTION

TAKEOFF RUNWAYS 18L/R: Climb on heading 175° or as assigned by ATC for vectors to cross HOOKK at or above 5000, then...

TAKEOFF RUNWAYS 36L/R: Climb on heading 355° or as assigned by ATC for vectors to cross HOOKK at or above 5000, then...

... on track 090° to ILEXY, then on transition. Maintain altitude assigned by ATC. Expect filed altitude 10 minutes after departure.

JAYJO TRANSITION (ILEXY4.JAYJO)
ZENZI TRANSITION (ILEXY4.ZENZI)

SC-3, 23 JAN 2025 to 20 FEB 2025