

RNAV 1 - DME/DME/IRU or GPS.

RADAR required.

AUSTIN APP CON
127.225 317.65
D-ATIS
124.4

NOTE: Turbojet and turboprop aircraft only.
NOTE: MNURE Transition for Houston terminal departures only.
NOTE: Expect runway assignment from AUSTIN TRACON upon initial contact.

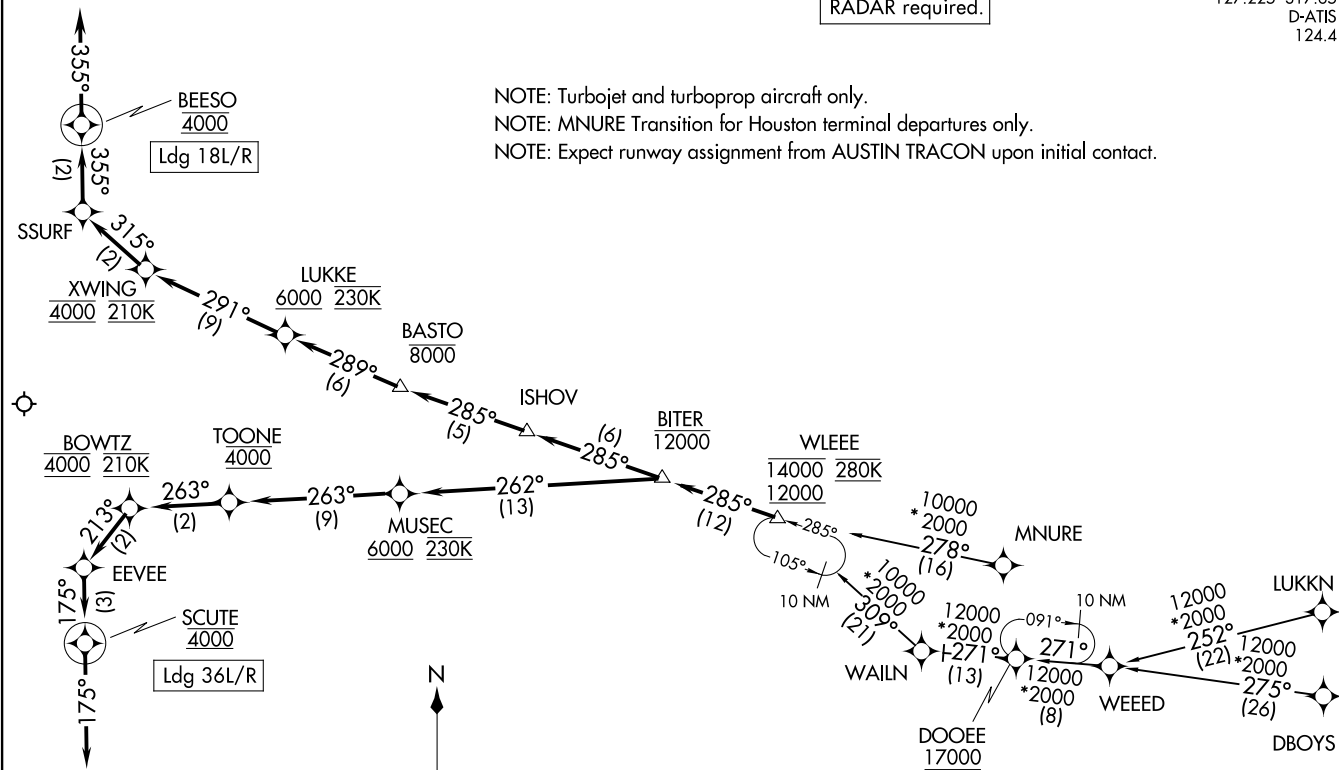
WLEEE SEVEN ARRIVAL (RNAV)
(WLEEE, WLEEE7) 14JUL22

AUSTIN, TEXAS
AUSTIN-BERGSTROM INTL (AUS)

(WLEEE, WLEEE7) 22195
WLEEE SEVEN ARRIVAL (RNAV)

AL-556 (FAA)

AUSTIN-BERGSTROM INTL (AUS)
AUSTIN, TEXAS



Ldg 18L/R

Ldg 36L/R



(NARRATIVE ON FOLLOWING PAGE)

NOTE: Chart not to scale.

ARRIVAL ROUTE DESCRIPTION

DBOYS TRANSITION (DBOYS.WLEEE7)

LUKKN TRANSITION (LUKKN.WLEEE7)

MNURE TRANSITION (MNURE.WLEEE7)

WAILN TRANSITION (WAILN.WLEEE7)

WEEED TRANSITION (WEEED.WLEEE7)

From WLEEE on track 285° to cross BITER at or below 12000.

LANDING RUNWAYS 18L/R: From BITER on track 285° to ISHOV, then on track 285° to cross BASTO at or below 8000, then on track 289° to cross LUKKE at or above 6000 and at 230K, then on track 291° to cross XWING at 4000 and at 210K, then on track 315° to SSURF, then on track 355° to cross BEESO at 4000, then on track 355°. Expect RADAR vectors to final approach course.

LANDING RUNWAYS 36L/R: From BITER on track 262° to cross MUSEC at or above 6000 and at 230K, then on track 263° to cross TOONE at 4000, then on track 263° to cross BOWTZ at 4000 and at 210K, then on track 213° to EEVEE, then on track 175° to cross SCUTE at 4000, then on track 175°. Expect RADAR vectors to final approach course.

SC-3, 23 JAN 2025 to 20 FEB 2025

SC-3, 23 JAN 2025 to 20 FEB 2025