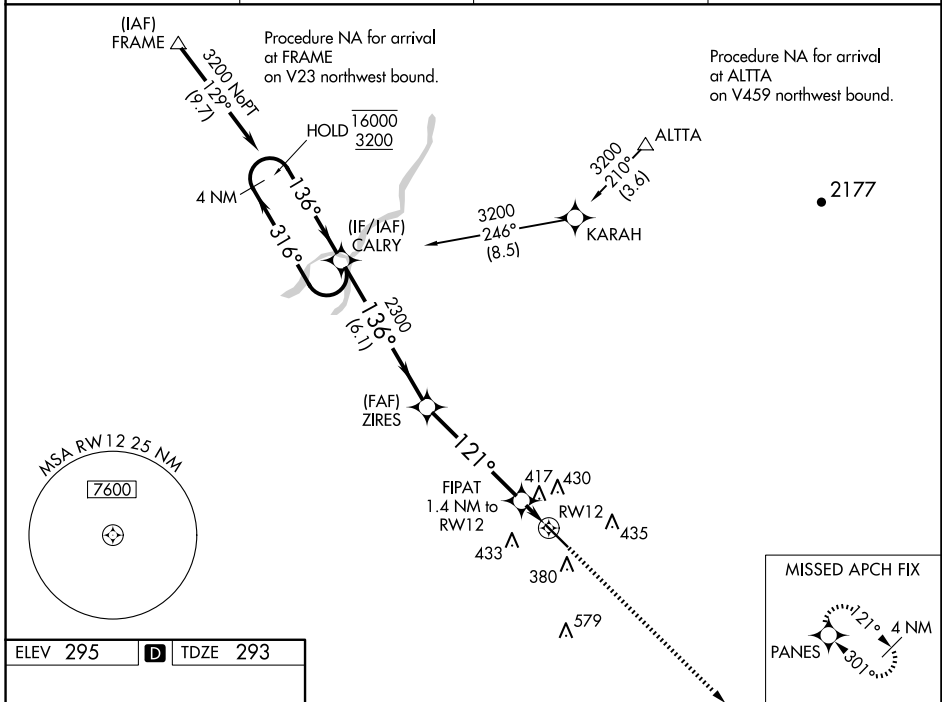


WAAS CH <b>82423</b> <b>W12A</b>	APP CRS <b>121°</b>	Rwy Idg TDZE Apt Elev	<b>5635</b> <b>293</b> <b>295</b>
--	------------------------	-----------------------------	---

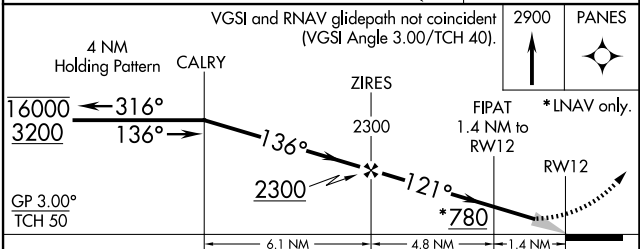
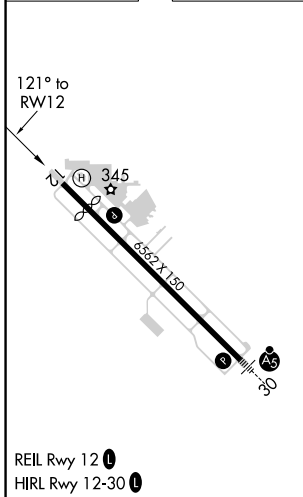
# RNAV (GPS) RWY 12

VISALIA MUNI (VIS)

RNP APCH.		MISSED APPROACH: Climb to 2900 direct PANES and hold.	
<p>▼ For uncompensated Baro-VNAV systems, LNAV/VNAV NA below -15°C or above 54°C.</p>			
AWOS-3PT <b>119.925</b>	FRESNO APP CON <b>118.5</b>	CLNC DEL <b>118.5</b>	UNICOM <b>123.05 (CTAF) 0</b>



ELEV 295	<b>D</b>	TDZE 293
----------	----------	----------



CATEGORY	A	B	C	D
LPV DA		543-3/4	250 (300-3/4)	
LNAV/VNAV DA		697-1 1/8	404 (500-1 1/8)	
LNAV MDA	680-1	387 (400-1)	680-1 1/8	387 (400-1 1/8)
<b>C</b> CIRCLING	720-1 425 (500-1)	760-1 465 (500-1)	760-1 1/2 465 (500-1 1/2)	940-2 645 (700-2)

SW-2, 23 JAN 2025 to 20 FEB 2025

SW-2, 23 JAN 2025 to 20 FEB 2025