

FSHUN THREE DEPARTURE (RNAV)

**TOP ALTITUDE:
7000**

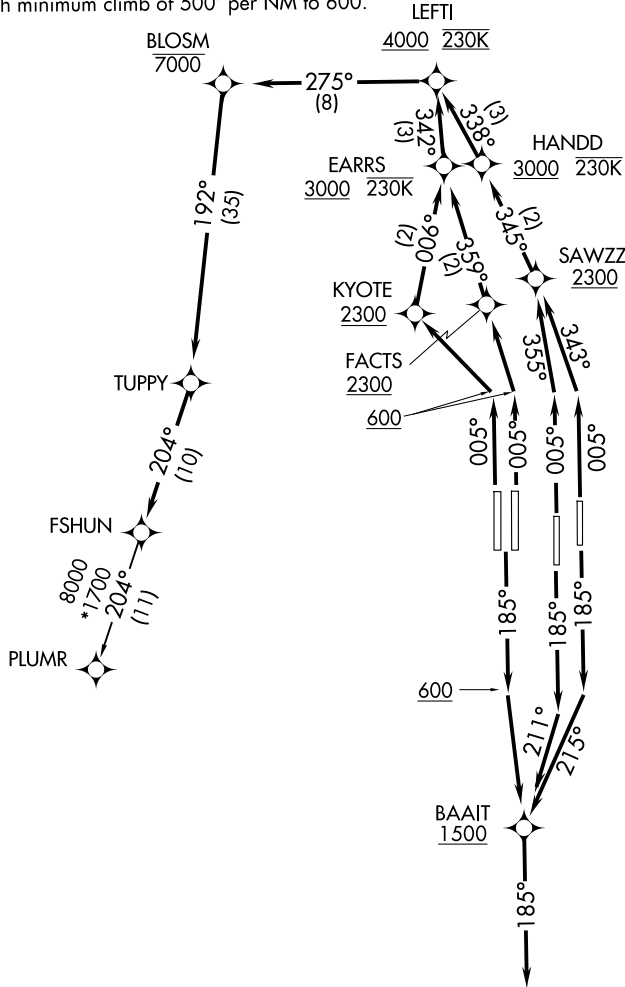
RNAV 1 - DME/DME/IRU or GPS.
RADAR required.

D-ATIS DEP 120.525
 CLNC DEL 134.7 341.7
 CPDLC
 GND CON 126.4 (East)
 121.8 (West)
 ORLANDO TOWER 118.45 253.5
 (Rwys 17L-35R,17R-35L) 124.3 253.5
 (Rwys 18L-36R, 18R-36L) 120.15 284.7
 ORLANDO DEP CON 120.15 284.7

TAKEOFF MINIMUMS

Rwys 17L/R, 18L/R, 35L/R, 36L/R: Standard with minimum climb of 500' per NM to 600.

SE-3, 23 JAN 2025 to 20 FEB 2025



SE-3, 23 JAN 2025 to 20 FEB 2025

NOTE: Jet and turbo-prop aircraft only.

(NARRATIVE ON FOLLOWING PAGE)

NOTE: Chart not to scale.

FSHUN THREE DEPARTURE (RNAV)



DEPARTURE ROUTE DESCRIPTION SEE ADDITIONAL REQUIREMENTS ON AAUP

TAKEOFF RUNWAY 17L: Climb on heading 185° to intercept course 215° to cross BAAIT at or above 1500, then on track 185°, for vectors to TUPPY, thence. . . .

TAKEOFF RUNWAY 17R: Climb on heading 185° to intercept course 211° to cross BAAIT at or above 1500, then on track 185°, for vectors to TUPPY, thence. . . .

TAKEOFF RUNWAYS 18L/R: Climb on heading 185° to 600, then direct BAAIT at or above 1500, then on track 185°, for vectors to TUPPY, thence. . . .

TAKEOFF RUNWAY 35L: Climb on heading 005° to intercept course 355° to cross SAWZZ at or above 2300, then on depicted route to TUPPY, thence. . . .

TAKEOFF RUNWAY 35R: Climb on heading 005° to intercept course 343° to cross SAWZZ at or above 2300, then on depicted route to TUPPY, thence. . . .

TAKEOFF RUNWAY 36L: Climb on heading 005° to 600, then direct KYOTE to cross at or above 2300, then on depicted route to TUPPY, thence. . . .

TAKEOFF RUNWAY 36R: Climb on heading 005° to 600, then direct FACTS to cross at or above 2300, then on depicted route to TUPPY, thence. . . .

. . . .on track 204° to FSHUN. Maintain 7000. Expect clearance to filed altitude 10 minutes after departure.

ALL AIRCRAFT: ATC climb gradients: If unable to accept climb rates advise ATC prior to taxi. RUNWAY 35R: 566 FT/NM to 2300, RUNWAY 36L: 637 FT/NM to 2300, RUNWAY 36R: 621 FT/NM to 2300.

PLUMR TRANSITION (FSHUN3.PLUMR)

SE-3. 23 JAN 2025 to 20 FEB 2025

SE-3. 23 JAN 2025 to 20 FEB 2025