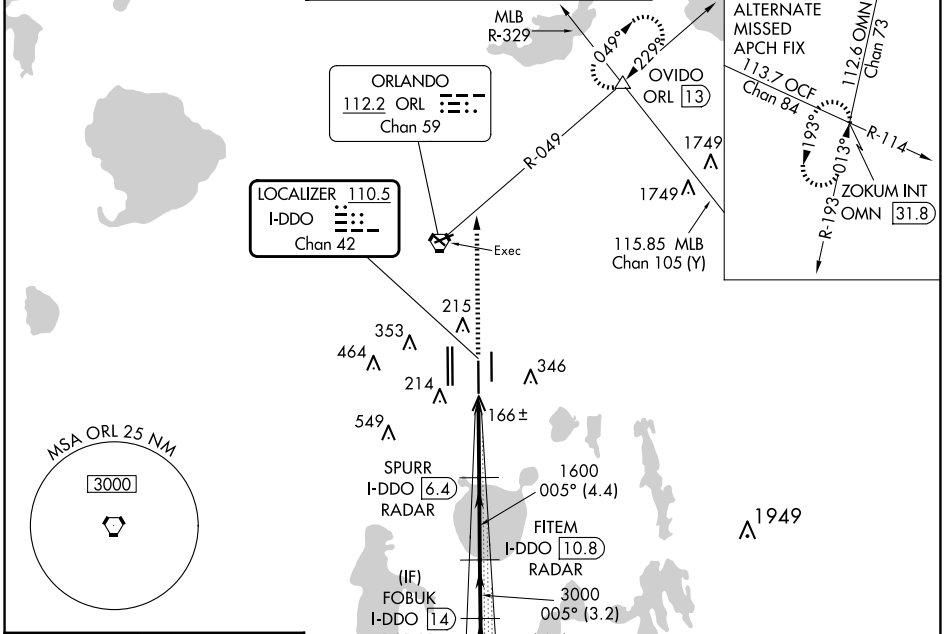


LOC/DME I- <b>DDO</b> <b>110.5</b> Chan <b>42</b>	APP CRS <b>005°</b>	Rwy Idg <b>10000</b> TDZE <b>88</b> Apt Elev <b>96</b>
---	------------------------	--

# ILS RWY 35L (CAT II & III)

ORLANDO INTL (MCO)

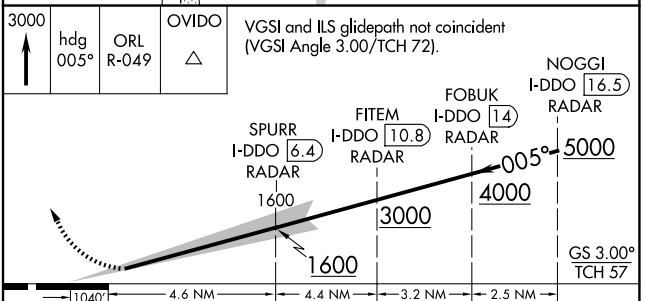
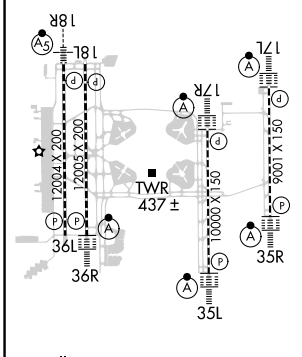
RADAR required for procedure entry. DME or RADAR required.		ALSF-2 	MISSED APPROACH: Climb to 3000 on heading 005° and ORL VORTAC R-049 to OVIDO INT/ORL 13 DME and hold.		
<p>⚠ Bright lights on highway midway between Rwy 35L and Rwy 35R may be mistaken for runway lights. Simultaneous approach authorized. When using alternate missed approach, simultaneous approach NA.</p>					
D-ATIS ARR <b>121.25</b> DEF <b>120.525</b>	ORLANDO APP CON <b>124.8 307.0</b>	ORLANDO TOWER <b>118.45 253.5</b> (Rwys 17L-35R, 17R-35L) <b>124.3 253.5</b> (Rwys 18L-36R, 18R-36L)	GND CON (East) <b>126.4</b> (West) <b>121.8</b>	CLNC DEL <b>134.7</b> <b>341.7</b>	CPDLC



SE-3, 23 JAN 2025 to 20 FEB 2025

SE-3, 23 JAN 2025 to 20 FEB 2025

ELEV <b>96</b>	<b>D</b>	TDZE <b>88</b>
----------------	----------	----------------



CATEGORY	A	B	C	D
S-ILS 35L		CAT II RA 106/12	100 DA 188	
S-ILS 35L		CAT III	RVR 06	

## CATEGORY II & III ILS - SPECIAL AIRCREW & AIRCRAFT CERTIFICATION REQUIRED