

LOC/DME I-DDO 110.5 Chan 42	APP CRS 005°	Rwy Idg TDZE 88 Apt Elev 96	10000
---	------------------------	---	--------------

ILS RWY 35L (SA CAT I)

ORLANDO INTL (MCO)

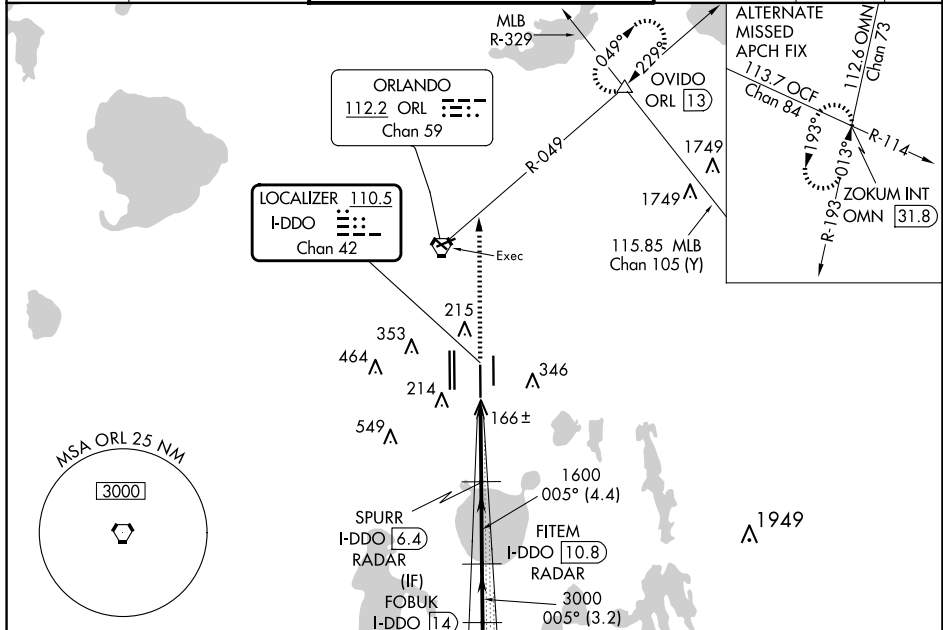
RADAR required for procedure entry. DME or RADAR required.

Requires specific OPSPEC, MSPEC or LOA approval. Simultaneous approach authorized. Bright lights on highway midway between Rwy 35L and Rwy 35R may be mistaken for runway lights. When using alternate missed approach, simultaneous approach NA.

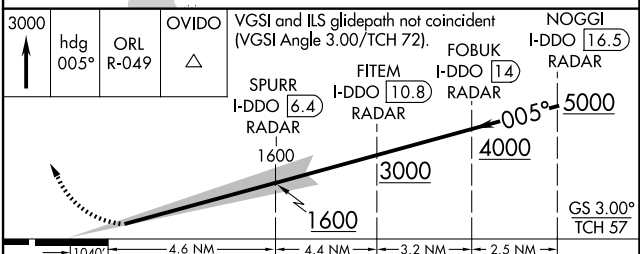
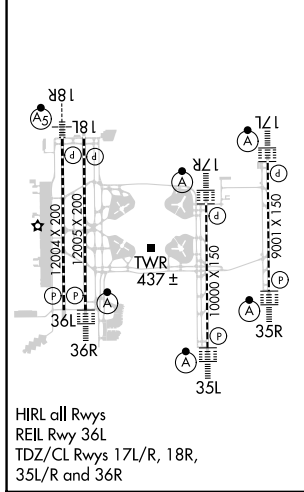
ALSF-2

MISSED APPROACH: Climb to 3000 on heading 005° and ORL VORTAC R-049 to OVIDO INT/ORL 1.3 DME and hold.

D-ATIS ARR 121.25 DEF 120.525	ORLANDO APP CON 124.8 307.0	ORLANDO TOWER 118.45 253.5 (Rwys 17L-35R, 17R-35L) 124.3 253.5 (Rwys 18L-36R, 18R-36L)	GND CON (East) 126.4 (West) 121.8	CLNC DEL 134.7 341.7	CPDLC
---	---------------------------------------	--	--	--	-------



ELEV 96	D	TDZE 88
---------	----------	---------



CATEGORY	A	B	C	D
----------	---	---	---	---

S-ILS 35R	RA 164/14 150 DA 238			
-----------	----------------------	--	--	--

SA CATEGORY I ILS - SPECIAL AIRCREW & AIRCRAFT CERTIFICATION REQUIRED

SE-3, 23 JAN 2025 to 20 FEB 2025

SE-3, 23 JAN 2025 to 20 FEB 2025